

Low Voltage Circuit Protection
Eaton eRBXC residual current operated circuit breaker with overcurrent protection



xPole eRBXC Compact RCBO

Expand your possibilities with Eaton's compact 18mm RCBO. At the same physical size as a standard single pole MCB, the eRBXC RCBO is designed for small assemblies and big savings!

The new RCBO is a single pole plus switched neutral device which enhances safety. The compact single pole size allows more poles to fit into assemblies offering a cost effective solution.

Features at a glance

- Fully conforms to AS/NZS 61009.1
- Compliant to Energy Safe Victoria – Additional Testing Requirements for RCBOs.
- Suits both Eaton xCAPS318 and xIC3 series busbar
- Rated current up to 40A
- Type A sensitivity devices available
- Approval number: NSW29220

Specifications

Electrical	
Design according to	IEC61009-1 AS/NZS 61009.1
Number of poles	1P+N Active and neutral poles switched
Rated current In:	6 – 40A
Rated voltage U_n	230/240 Vac
Rated frequency	50/60 Hz
Voltage range for protective function	184-264V~
Rated short circuit capacity	6kA
Rated residual making/breaking capacity	3kA
Tripping Characteristic	C
Rated tripping current $I_{\Delta n}$	250A (8/20us)
Rated tripping current $I_{\Delta no}$	10, 30mA
Residual Current Sensitivity	A
Rated non-tripping current $I_{\Delta no}$	$0.5 I_{\Delta no}$
Rated Insulation Voltage	500V
Dielectric Strength	2.5kV
Selectivity class	3
Operating Temperature	-5 to 55°C
Endurance	Electrical comp. >4,000 operating cycles Mechanical comp. >10,000 operating cycles
Load terminals	Open mouthed/lift terminals
Line terminals	Open mouthed/lift terminals
Terminal protection	Finger and hand touch safe
Terminal capacity	1 - 25mm ²
Terminal Screw Torque	2.5Nm
Degree of protection, switch	IP20
Degree of protection, built-in	IP40
Resistance to climatic conditions	acc. To IEC/EN 61009

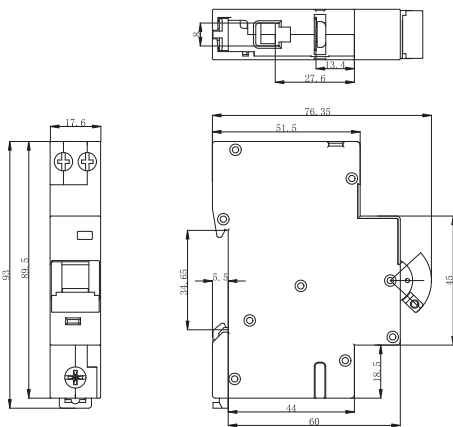
EATON

Powering Business Worldwide

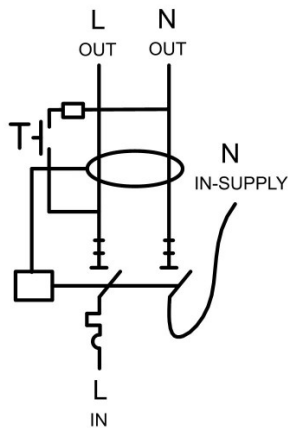
Description Type A	Sensitivity (A)	Sensitivity (mA)	Material no.	Item no.	Units per package
RCBO eRBXC 1P+NS 6KA C CURVE 30MA TYPE A 6A	6	30	CBE05748	eRBXC-6/1N/C/003-A	1/60
RCBO eRBXC 1P+NS 6KA C CURVE 30MA TYPE A 10A	10	30	CBE05749	eRBXC-10/1N/C/003-A	1/60
RCBO eRBXC 1P+NS 6KA C CURVE 30MA TYPE A 16A	16	30	CBE05750	eRBXC-16/1N/C/003-A	1/60
RCBO eRBXC 1P+NS 6KA C CURVE 30MA TYPE A 20A	20	30	CBE05751	eRBXC-20/1N/C/003-A	1/60
RCBO eRBXC 1P+NS 6KA C CURVE 30MA TYPE A 25A	25	30	CBE05752	eRBXC-25/1N/C/003-A	1/60
RCBO eRBXC 1P+NS 6KA C CURVE 30MA TYPE A 32A	32	30	CBE05753	eRBXC-32/1N/C/003-A	1/60
RCBO eRBXC 1P+NS 6KA C CURVE 30MA TYPE A 40A	40	30	CBE05754	eRBXC-40/1N/C/003-A	1/60
RCBO eRBXC 1P+NS 6KA C CURVE 10MA TYPE A 6A	6	10	CBE05755	eRBXC-6/1N/C/001-A	1/60
RCBO eRBXC 1P+NS 6KA C CURVE 10MA TYPE A 10A	10	10	CBE05756	eRBXC-10/1N/C/001-A	1/60
RCBO eRBXC 1P+NS 6KA C CURVE 10MA TYPE A 16A	16	10	CBE05757	eRBXC-16/1N/C/001-A	1/60
RCBO eRBXC 1P+NS 6KA C CURVE 10MA TYPE A 20A	20	10	CBE05758	eRBXC-20/1N/C/001-A	1/60
RCBO eRBXC 1P+NS 6KA C CURVE 10MA TYPE A 25A	25	10	CBE05759	eRBXC-25/1N/C/001-A	1/60
RCBO eRBXC 1P+NS 6KA C CURVE 10MA TYPE A 32A	32	10	CBE05760	eRBXC-32/1N/C/001-A	1/60
RCBO eRBXC 1P+NS 6KA C CURVE 10MA TYPE A 40A	40	10	CBE05761	eRBXC-40/1N/C/001-A	1/60



Dimensions



Connection diagram



Tripping Characteristic C

