

AIR CONDITIONING



HEATING AND COOLING SOLUTIONS

SPLIT SYSTEMS



AUSTRALIA'S BEST SPLIT SYSTEM AIR CONDITIONER BRAND

We're proud to have been rated the best split system air-conditioner brand in both the 2021 and 2022 Finder Awards. These awards recognise brand sentiment from customer feedback on different retail product categories.



AUSTRALIA'S BEST AIR CONDITIONER BRAND

We're proud to have been recognised by CHOICE® as Australia's best brand of air conditioner five years in a row - something no other air conditioner brand has done before. The award is based on test reviews of over 200 reverse cycle air conditioners and the results of the annual reliability and satisfaction survey completed by CHOICE® members.



AUSTRALIA'S MOST SATISFIED CUSTOMERS

We're also proud to have been named by Canstar Blue as having the most satisfied customers of any air conditioner brand for the last four years. Canstar Blue's annual air conditioner review rates air conditioning brands on functionality and features, noise, ease of use, reliability, value for money and overall consumer satisfaction.

MITSUBISHI HEAVY INDUSTRIES AIR CONDITIONERS AUSTRALIA

Mitsubishi Heavy Industries Air-Conditioners Australia (MHIAA) is one of Australia's leading suppliers of premium residential and commercial air conditioning systems. Delivering engineering excellence for over 130 years, the Mitsubishi Heavy Industries brand is instantly recognisable for quality and technological advancement.

With innovation central to both the organisation and the development of air conditioning systems, Mitsubishi Heavy Industries carries a strong philosophy of engineering products that are designed to improve the lives of those who use them and at the same time, create a sustainable future for our company and the world we live in.

COMMITTED TO QUALITY

Standing behind the quality of our products, is our commitment to our customers and our after sales service guarantees. Along with the rigorous quality assurance testing carried out on all Mitsubishi Heavy Industries products, comprehensive warranties provide you with peace of mind and carry our commitment to quality.

5 YEARS PARTS AND LABOUR WARRANTY

Mitsubishi Heavy Industries Air conditioners Australia focuses solely on manufacturing high performance air conditioners for the Australian market. All our systems are of the highest quality and are backed by a full 5 year parts and labour warranty.



EXCEEDING ENERGY PERFORMANCE STANDARDS

To comply with Australian standards and deliver the most efficient solutions possible to our customers, all Mitsubishi Heavy Industries Air conditioners Australia systems meet and exceed the Minimum Energy Performance Standards (MEPS).



MHIAA Split Systems

Our award winning split systems offer a quiet and highly energy efficient solution for heating and cooling individual rooms. They are comprised of an indoor unit which is installed on an interior wall or in your ceiling and an outdoor unit which is placed on an exterior wall of your home. All split systems come with a wireless remote control as standard.

Our split systems come in a variety of types (wall mounted, floor mounted and bulkhead), a range of capacities and both cool only and reverse cycle to suit any Aussie home.

All our systems have undergone strict and rigorous testing and quality control measures to ensure they are of the highest standards and will withstand the tough Australian climate.



Wall Mounted

- Highly energy efficient
- Convenient features and functions
- Available in range of capacities
- Suitable for any home



Floor Mounted

- Energy efficient
- Convenient features and functions
- Perfect for colder climates



Bulkhead

- Super quiet operation
- Discreet design
- Perfect for renovations, new builds
- Convenient features and functions

Our Technology

IMPROVED HEAT EXCHANGER

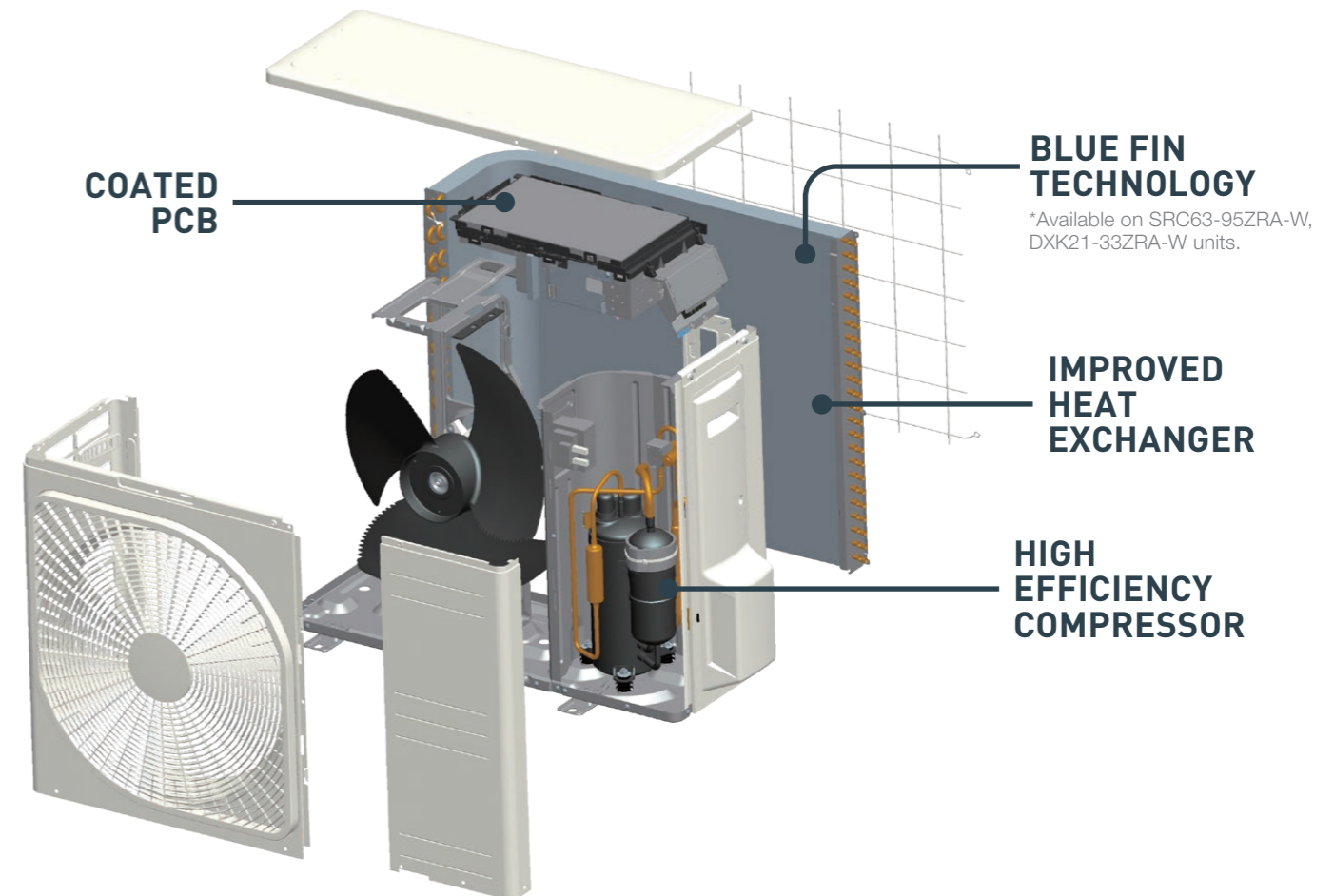
Our new and improved heat exchanger has been developed to improve refrigerant distribution and increase the systems effectiveness. The new design features a larger heat exchange area, boosting the unit's overall efficiency.

COATED PCB

To protect against humid weather a protective coating is applied to the circuit board in the outdoor unit, allowing it to withstand Australia's varying weather conditions and ensure the longevity of your system.

BLUE FIN TECHNOLOGY

Mitsubishi Heavy Industries outdoor units are coated with specially formulated layers that assist in preventing the hydrophilicity effect and assists in reducing the corrosion rate of the aluminium section from harsh Australian weather conditions.



HIGH EFFICIENCY COMPRESSOR

One of the key features that provides Mitsubishi Heavy Industries air conditioners with their powerful performance is our highly efficient compressor. Combined with a Neodymium motor that uses powerful, rare earth magnets, Mitsubishi Heavy Industries air conditioners can deliver a higher motor efficiency while producing much less operational noise.

DC PAM INVERTER

The PAM control used in Mitsubishi Heavy Industries air conditioners helps minimise the loss of electricity and boost the efficiency by allowing the unit to reach the temperature quickly before slowing down the compressor. This allows the unit to save energy while maintaining a comfortable temperature in the room.

WIDE OPERATION RANGE

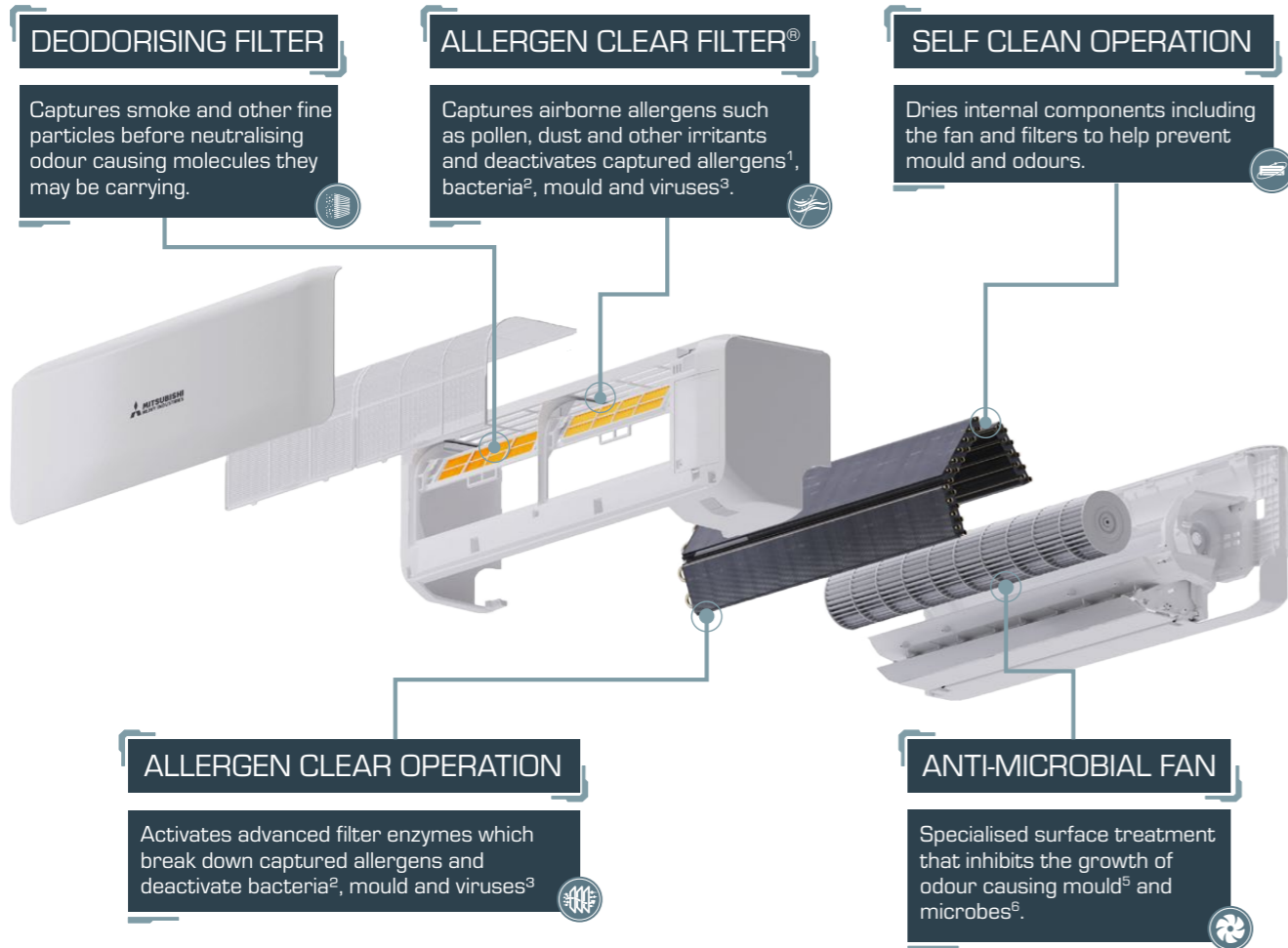
With our advanced technology and high quality components, Mitsubishi Heavy Industries air conditioners can operate in ambient outdoor temperatures as low as -20°C in heating mode and as high as $+46^{\circ}\text{C}$ in cooling mode.

This permits the installation in areas where the temperature conditions can be considered extreme.

Clean Air Technology

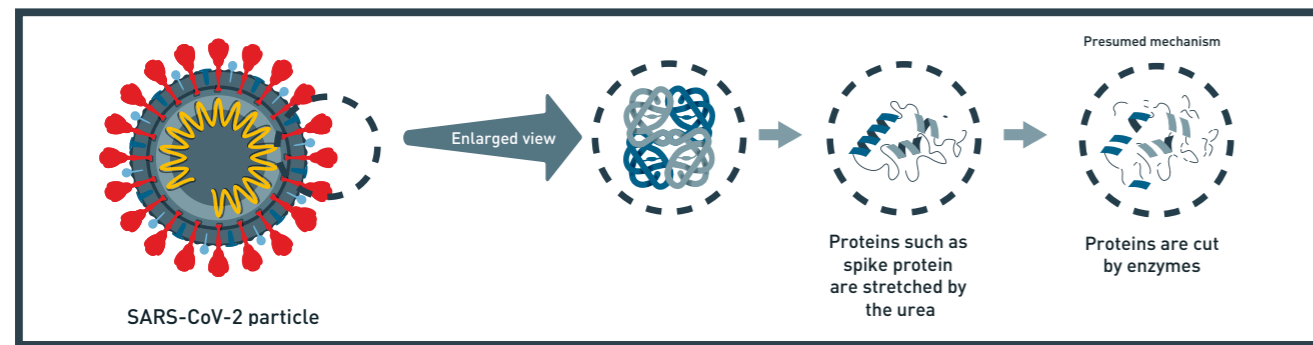


Mitsubishi Heavy Industries' Clean Air Technology is a combination of several different yet specialised components, systems and functions that are designed to work in synchronization to help improve indoor air quality by removing allergens and odours and deactivating mould, bacteria and viruses. Learn more at mhiaa.com.au/clean-air-technology.



Recent tests have confirmed that the enzyme-urea compound contained within Mitsubishi Heavy Industries' Allergen Clear Filter is effective in the de-activation of SARS-CoV-2, the virus that causes COVID-19⁴.

99.998% OF SARS-COV-2 DEACTIVATED BY MHI'S ENZYME-UREA TECHNOLOGY CONTAINED WITHIN MHI'S ALLERGEN CLEAR FILTER®



¹Test method: ELISA colorimetric method Laboratory: Independent administrative agency national hospital mechanism Sagami Hospital, No.1536
²Test method: ELISA colorimetric method / ELISA fluorescent method Laboratory: Independent administrative agency national hospital mechanism Sagami Hospital, No.1536
³Test method: TCID (Infection value 50%) Laboratory: Foundation of Kitazato Environmental Science Center, No.15-0145
⁴Test method: Anti-viral test using severe acute respiratory syndrome coronavirus 2 (SARS-CoV-2) Laboratory: Japan Textile Products Quality and Technology Center Kobe Testing Center

Air Conditioning Sizing Chart

A Class

Insulated roof space, walls and sub floor, full brick or brick veneer construction, average size windows with awnings, full shading south facing aspect, temperate weather conditions.

B Class

Insulated roof space, full brick or brick veneer construction, average size windows with internal shades, north facing aspect, temperate climate.

C Class

Insulated roof space, full brick or brick veneer construction, average size windows with internal shades, east facing aspect or sub tropical climate.

D Class

Little or no insulation, weatherboard, fibro or brick veneer construction, large windows, no shading from the sun westerly facing aspect.

| Selection Chart for Cooling and Heating | | | Room Class | | | |
|--|----------|---------|--------------------------------------|----|----|----|
| Model | Capacity | | A | B | C | D |
| | | | Maximum Floor Area (m ²) | | | |
| Avanti PLUS® (SRK20ZSXA-W) Avanti® (SRK20ZSA-W / DXK06ZSA-W) | 2.0kW | Cooling | 20 | 16 | 14 | 12 |
| | | Heating | 27 | 23 | 20 | 16 |
| Avanti® Cool Only (SRK10YSA-W) | 2.5kW | Cooling | 25 | 21 | 18 | 15 |
| Avanti PLUS® (SRK25ZSXA-W) Avanti® (SRK25ZSA-W / DXK09ZSA-W) Akari™ SRR-ZS (SRR25ZS-W) Wera™ SRF-ZS (SRF25ZS-W) | 2.5kW | Cooling | 25 | 21 | 18 | 15 |
| | | Heating | 34 | 28 | 24 | 20 |
| Avanti® Cool Only (SRK13YSA-W) | 3.5kW | Cooling | 35 | 29 | 25 | 21 |
| Avanti PLUS® (SRK35ZSXA-W) Avanti® (SRK35ZSA-W / DXK12ZSA-W) Akari™ (SRR35ZS-W) Wera™ (SRF35ZS-W) | 3.5kW | Cooling | 35 | 29 | 25 | 21 |
| | | Heating | 40 | 33 | 29 | 24 |
| Avanti® Cool Only (SRK18YSA-W) | 5.0kW | Cooling | 51 | 43 | 36 | 30 |
| Avanti PLUS® (SRK50ZSXA-W) Avanti® (SRK50ZSA-W / DXK18ZSA-W) Wera™ (SRF50ZSX-W) | 5.0kW | Cooling | 51 | 43 | 36 | 30 |
| | | Heating | 58 | 48 | 41 | 34 |
| Avanti PLUS® (SRK60ZSXA-W) | 6.0kW | Cooling | 60 | 50 | 45 | 37 |
| | | Heating | 68 | 57 | 48 | 39 |
| Bronte® (SRK63ZRA-W / DXK21ZRA-W) | 6.3kW | Cooling | 63 | 54 | 47 | 38 |
| | | Heating | 71 | 58 | 50 | 42 |
| Bronte® Cool Only (SRK24YRA-W) | 7.1kW | Cooling | 71 | 59 | 51 | 42 |
| Bronte® (SRK71ZRA-W / DXK24ZRA-W) | 7.1kW | Cooling | 71 | 59 | 51 | 42 |
| | | Heating | 80 | 67 | 57 | 47 |
| Bronte® (SRK80ZRA-W / DXK28ZRA-W) | 8.0kW | Cooling | 80 | 67 | 57 | 47 |
| | | Heating | 89 | 73 | 64 | 52 |
| Bronte® (SRK95ZRA-W / DXK33ZRA-W) | 9.5kW | Cooling | 95 | 78 | 68 | 57 |
| | | Heating | 105 | 87 | 76 | 60 |
| Bronte® (SRK100AVNAWZR / SRK100AVSAWZR) | 10.0kW | Cooling | 100 | 83 | 73 | 62 |
| | | Heating | 110 | 92 | 81 | 68 |

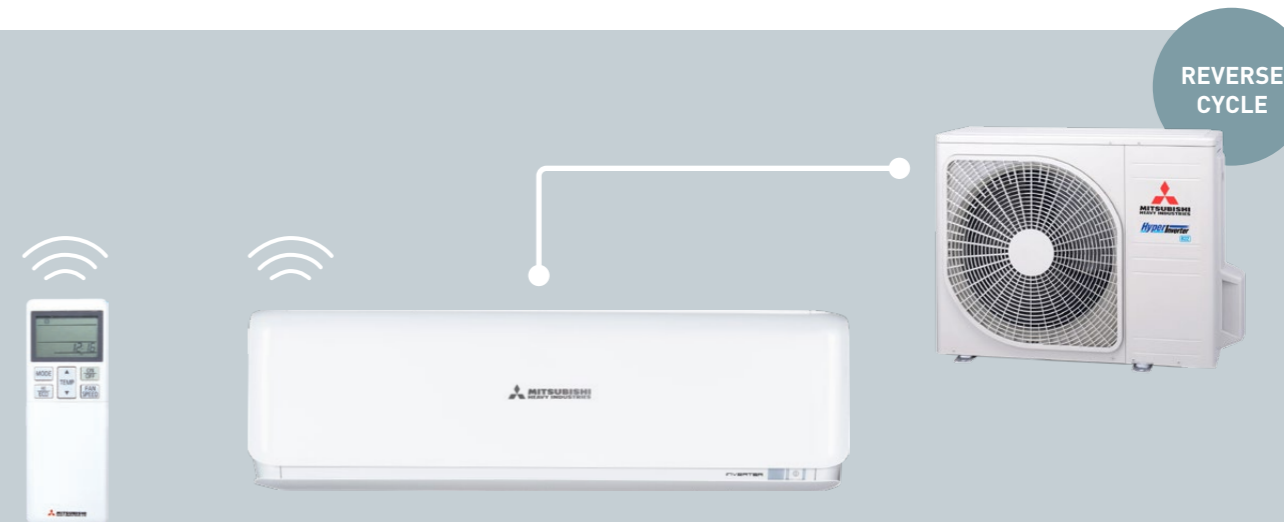
* This guide has been developed to assist in model selection for the majority of normal residential air conditioning situations, and as per AS/NZS 3823 performance data. MHIAA recommend a heat load survey should be conducted by a licensed air conditioning installer. For R32 systems, minimum installation area for indoor unit and other AU/NZS Standards apply. Products are to be installed by a licensed and qualified person only.

AVANTI® Series



See pg. 16-17 for full list of features and functions

AVANTI PLUS® Series



See pg. 16-17 for full list of features and functions

Wall Mounted 2.0kW | 2.5kW | 3.5kW | 5kW



Named by ProductReview as the best split system of 2021, the Avanti® split system features a sleek and stylish design and incorporates a range of convenient features and functions. Coming in both reverse cycle and cool only models, the Avanti® is best suited to small and medium spaces.

HIGH POWER OPERATION
Provides 15mins of boosted power allowing you to quickly heat or cool your home before returning to normal operation.

3D AUTO MODE
Activates three independent motors which deliver an effective and efficient airflow throughout the room.

LED BRIGHTNESS CONTROL
Adjust the brightness of the LED display on the indoor unit to minimise disturbance and ensure a good nights sleep.

CLEAN AIR TECHNOLOGY
Captures and neutralises fine smoke particles, allergens, odours bacteria and viruses while also inhibiting growth of mould within the unit*

| AVANTI SERIES | | | 2.0kW | 2.5kW | 2.5kW (Cool Only) | 3.5kW | 3.5kW (Cool Only) | 5.0kW | 5.0kW (Cool Only) |
|--------------------------------|---------|---------|-------------|-------------|-------------------|------------|-------------------|-------------|-------------------|
| Cooling Capacity | | | 2.0 | 2.5 | 2.5 | 3.5 | 3.5 | 5.0 | 5.0 |
| Heating Capacity | | | 2.7 | 3.2 | N/A | 3.7 | N/A | 5.8 | N/A |
| Star Energy Rating (GEMS 2019) | Hot | Cooling | ★★★★★ (4.5) | ★★★★★ (4.5) | ★★★★★ (4.5) | ★★★★★ (4) | ★★★★★ (4) | ★★★★★ (3.5) | ★★★★★ (3.5) |
| | | Heating | ★★★ (3.5) | ★★★ (3.5) | N/A | ★★★ (3.5) | N/A | ★★★ (3.5) | N/A |
| | Average | Cooling | ★★★★ (4) | ★★★★ (3.5) | ★★★★ (3.5) | ★★★★ (3.5) | ★★★★ (3.5) | ★★★ (3) | ★★★ (3) |
| | | Heating | ★★★ (3.5) | ★★★ (3) | N/A | ★★★ (3) | N/A | ★★★ (2.5) | N/A |
| | Cold | Cooling | ★★★★ (4) | ★★★★ (3.5) | ★★★★ (3.5) | ★★★★ (3.5) | ★★★★ (3.5) | ★★★ (3) | ★★★ (3) |
| | | Heating | ★★★ (3) | ★★★ (3) | N/A | ★★★ (2.5) | N/A | ★★ (2) | N/A |

SRC25-35ZSA-W outdoor unit shown.
*Allergen Clear Operation not available in Cool Only products.

OTHER CONTROL OPTIONS (SOLD SEPARATELY)



Wall Mounted 2kW | 2.5kW | 3.5kW | 5kW | 6kW



The Avanti PLUS® is one of the quietest and most energy efficient split systems available. It incorporates an energy saving motion sensor, improved automatic mode for precise temperature control and a range of other convenient features and functions. Available in reverse cycle, the Avanti PLUS® is perfect for small to medium spaces.

MOTION SENSOR
Automatically adjusts the set temperature based on human activity detected in the room. Switches the unit off when no activity is detected to save energy.

3D AUTO MODE
Activates three independent motors which deliver an effective and efficient airflow throughout the room.

SILENT OPERATION
Set periods of time where the unit will operate with even further reduced noise levels.

CLEAN AIR TECHNOLOGY
Captures and neutralises fine smoke particles, allergens, odours, bacteria and viruses while also inhibiting growth of mould within the unit.

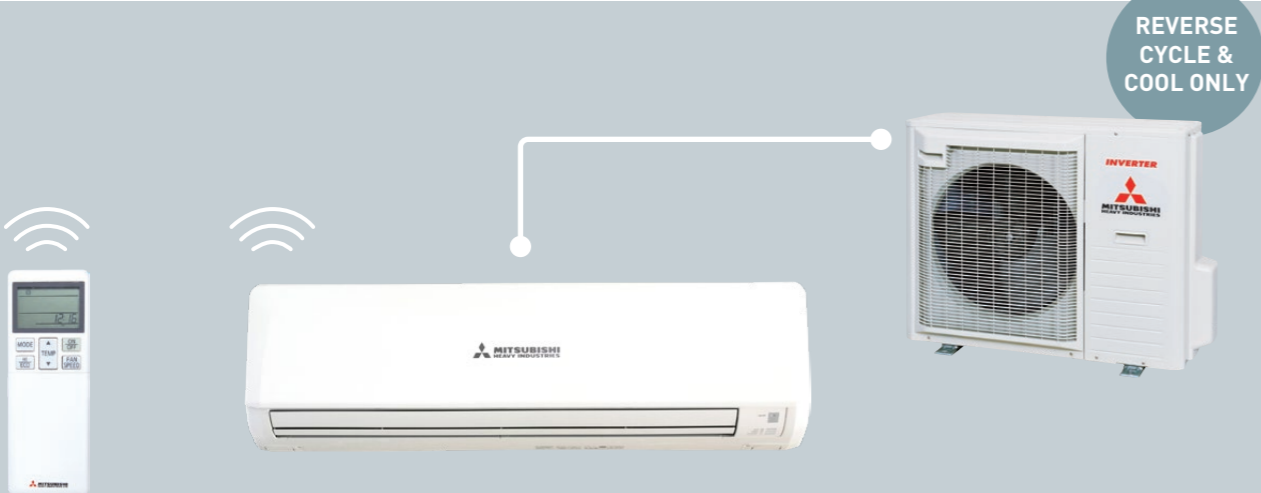
| AVANTI PLUS SERIES | | | 2.0kW | 2.5kW | 3.5kW | 5.0kW | 6.0kW |
|--------------------------------|---------|---------|-------------|------------|------------|------------|-------------|
| Cooling Capacity | | | 2.0 | 2.5 | 3.5 | 5.0 | 6.1 |
| Heating Capacity | | | 2.7 | 3.2 | 4.3 | 6.0 | 6.8 |
| Star Energy Rating (GEMS 2019) | Hot | Cooling | ★★★★★ (5.5) | ★★★★★ (5) | ★★★★★ (5) | ★★★★★ (4) | ★★★★★ (3.5) |
| | | Heating | ★★★ (4.5) | ★★★ (4.5) | ★★★ (4) | ★★★ (3.5) | ★★★ (3.5) |
| | Average | Cooling | ★★★★ (4.5) | ★★★★ (4.5) | ★★★★ (4) | ★★★★ (3.5) | ★★★ (3) |
| | | Heating | ★★★ (4) | ★★★ (4) | ★★★ (3.5) | ★★★ (3) | ★★★ (3) |
| | Cold | Cooling | ★★★★ (4.5) | ★★★★ (4.5) | ★★★★ (4.5) | ★★★★ (3.5) | ★★★★ (3.5) |
| | | Heating | ★★★ (3.5) | ★★★ (3.5) | ★★★ (3) | ★★★ (2.5) | ★★★ (2.5) |

SRC20-60ZSXA-W outdoor unit shown.

OTHER CONTROL OPTIONS (SOLD SEPARATELY)



BRONTE® Series



See pg. 16 -17 for full list of features and functions

WERA™ Series



See pg. 16-17 for full list of features and functions

Wall Mounted 6.3kW | 7.1kW | 8kW | 9.5kW | 10kW



Named by ProductReview as the best split system of 2021, the Bronte® split system incorporates advanced fan blade technology to efficiently deliver an industry leading, long reach airflow of 18m*. Coming in both reverse cycle and cool only models, the Bronte® is best suited to medium to larger spaces.

HIGH POWER OPERATION
Provides 15mins of boosted power allowing you to quickly heat or cool your home before returning to normal operation.

JET AIR TECHNOLOGY
Advanced blade technology used in development of jet engines to deliver industry leading long reach airflow of 18m*

SILENT OPERATION
Set periods of time where the unit will operate with even further reduced noise levels.

CLEAN AIR TECHNOLOGY
Captures and neutralises fine smoke particles, allergens, odours, bacteria and viruses while also inhibiting growth of mould within the unit**.

| BRONTE SERIES | | | 6.3kW | 7.1kW | 7.1kW (Cool Only) | 8.0kW | 9.5kW | 10.0kW |
|--------------------------------|---------|---------|------------|------------|-------------------|------------|------------|------------|
| Cooling Capacity | | | 6.3 | 7.1 | 7.1 | 8.0 | 9.5 | 10 |
| Heating Capacity | | | 7.1 | 8.0 | N/A | 9.0 | 10.3 | 11.2 |
| Star Energy Rating (GEMS 2019) | Hot | Cooling | ★★★★ (4) | ★★★★ (3.5) | ★★★★ (3.5) | ★★★★ (3.5) | ★★★★ (3.5) | ★★★★ (3) |
| | | Heating | ★★★★ (3.5) | ★★★ (3) | N/A | ★★★ (3) | ★★★ (3.5) | ★★★ (2.5) |
| | Average | Cooling | ★★★★ (3.5) | ★★★★ (3.5) | ★★★★ (3.5) | ★★★★ (3) | ★★★★ (3) | ★★★★ (2.5) |
| | | Heating | ★★★ (3) | ★★★ (2.5) | N/A | ★★★ (2.5) | ★★★ (2.5) | ★★ (1.5) |
| | Cold | Cooling | ★★★★ (3.5) | ★★★★ (3.5) | ★★★★ (3.5) | ★★★★ (3.5) | ★★★★ (3.5) | ★★★★ (3) |
| | | Heating | ★★★ (2.5) | ★★ (2) | N/A | ★★ (2) | ★★ (2) | ★ (1) |

SRC71-80ZRA-W outdoor unit shown.
*7.1kW, 8.0kW, 9.5kW & 10kW models in cooling mode.
**Allergen Clear Operation not available in Cool Only products.

OTHER CONTROL OPTIONS (SOLD SEPARATELY)



Floor Standing Systems 2.5kW | 3.5kW | 5kW

The Wera™ series of floor standing systems are the perfect solution when wall space is at a premium. The indoor unit is installed close to the floor and can be placed under a window, semi-recessed into the wall or mounted in a convenient location.

HIGH POWER OPERATION
Provides 15mins of boosted power allowing you to quickly heat or cool your home before returning to normal operation.

MEMORY LOUVRE
Set the louvre at the desired angle. The unit will automatically return the louvres to this position on every subsequent start up.

SILENT OPERATION
Set periods of time where the unit will operate with even further reduced noise levels.

CLEAN AIR TECHNOLOGY
Captures and neutralises fine smoke particles, allergens, odours, bacteria and viruses while also inhibiting growth of mould within the unit.

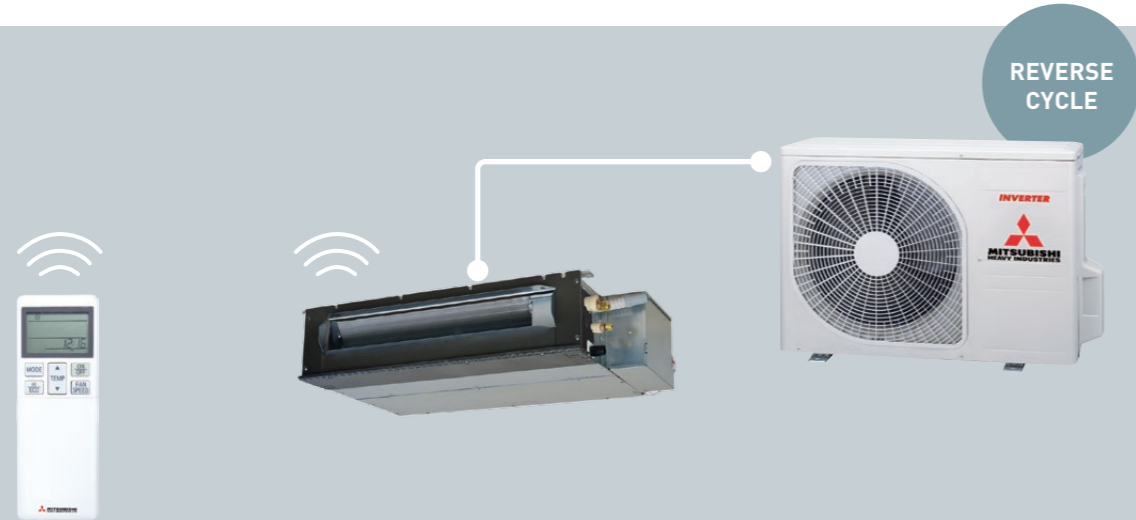
| WERA SERIES | | | 2.5kW | 3.5kW | 5.0kW |
|--------------------------------|---------|---------|------------|------------|------------|
| Cooling Capacity | | | 2.5 | 3.5 | 5.0 |
| Heating Capacity | | | 3.4 | 4.5 | 6.0 |
| Star Energy Rating (GEMS 2019) | Hot | Cooling | ★★★★ (4) | ★★★★ (4) | ★★★★ (3.5) |
| | | Heating | ★★★ (3.5) | ★★★ (3) | ★★★ (3) |
| | Average | Cooling | ★★★★ (3.5) | ★★★★ (3.5) | ★★★★ (3) |
| | | Heating | ★★★ (3) | ★★★ (2.5) | ★★★ (2.5) |
| | Cold | Cooling | ★★★★ (3.5) | ★★★★ (3.5) | ★★★★ (3) |
| | | Heating | ★★★ (2.5) | ★★ (2) | ★★ (2) |

SRC50ZSXA-W outdoor unit shown.

OTHER CONTROL OPTIONS (SOLD SEPARATELY)



AKARI™ Series



See pg. 16 -17 for full list of features and functions

Bulkhead Systems 2.5kW | 3.5kW

The Akari™ series of low profile bulkhead systems are designed to sit within your ceiling space and distribute air via discreet grilles. These compact units require no ducting and are perfect for renovated spaces and applications such as apartments where space is at a premium.

HIGH POWER OPERATION

Provides 15mins of boosted power allowing you to quickly heat or cool your home before returning to normal operation.

SUPER QUIET OPERATION

The Akari series offers some of the quietest operation levels on the market achieving 24 dB(A) on low fan mode.

SILENT OPERATION

Set periods of time where the unit will operate with even further reduced noise levels.

SELF CLEAN OPERATION

Dries the indoor unit internal components, preventing the growth of mould.

| AKARI SERIES | | | 2.5kW | 3.5kW |
|--------------------------------|---------|---------|------------|------------|
| Cooling Capacity | | kW | 2.5 | 3.5 |
| Heating Capacity | | kW | 3.4 | 4.2 |
| Star Energy Rating (GEMS 2019) | Hot | Cooling | ★★★★ (3.5) | ★★★★ (3.5) |
| | | Heating | ★★★★ (3.5) | ★★★ (3) |
| | Average | Cooling | ★★★★ (3) | ★★★★ (3) |
| | | Heating | ★★★ (3) | ★★★ (2.5) |
| | Cold | Cooling | ★★★★ (3) | ★★★★ (3) |
| | | Heating | ★★★ (2.5) | ★★★ (2.5) |

SRC25-35ZSA-W outdoor unit shown.

OTHER CONTROL OPTIONS (SOLD SEPARATELY)



ZONED ENERGY RATING LABELS

The Australian Government, under the Greenhouse and Energy Minimum Standards (GEMS) Act, have announced that a new Zoned Energy Rating Label (ZERL) will be rolled out across Australia.

These new air conditioner labels provide more information including the difference in energy efficiency and estimated annual energy consumption of each model within these three zones.

NEW ZONED ENERGY RATING LABELS PROVIDE INFORMATION INCLUDING:

- HOW MUCH COOLING AND HEATING POWER AN AIR CONDITIONER CAN PROVIDE*
- HOW EFFICIENT AN AIR CONDITIONER IS DEPENDING ON WHERE YOU LIVE
- AN ESTIMATE OF ELECTRICITY THE AIR CONDITIONER WILL USE, DEPENDING ON WHERE YOU LIVE
- HOW MUCH NOISE THE INDOOR AND OUTDOOR UNIT PRODUCE*

*Under AS/NZS testing conditions

THIS TELLS YOU HOW MUCH COOLING POWER THE AIR CONDITIONER CAN PROVIDE

This example shows that if the temperature outside is hot (35°C) the system can provide 2.0 kilowatts (kW) of cooling.

THIS TELLS YOU HOW MUCH HEATING POWER THE AIR CONDITIONER CAN PROVIDE

This example shows that if the temperature outside is cold (7°C) the system can provide 2.7 kilowatts (kW) of heating and if the temperature outside is very cold (2°C), then the appliance can provide 3.7 kW of heating.

This is the name and model number. This example shows the 2.0kW Avanti PLUS system.

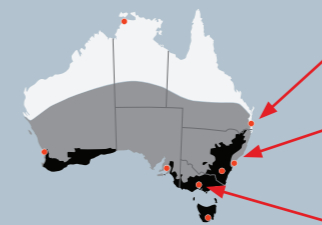
THIS TELLS YOU HOW MUCH NOISE THE AIR CONDITIONER WILL PRODUCE

The number inside the house indicates how loud the outdoor unit will be in decibels (dB(A)) if you were listening from inside your home. The number outside the house indicates how loud the outdoor unit will be standing next to it.

THIS TELLS YOU HOW EFFICIENT THE AIR CONDITIONER IS

The blue stars represent how efficient it is at cooling, the red stars represent how efficient it is at heating.

There are three bands of ratings for **Hot**, **Average** and **Cold Areas** in Australia. Use the map to see which area you live in and which band you should reference



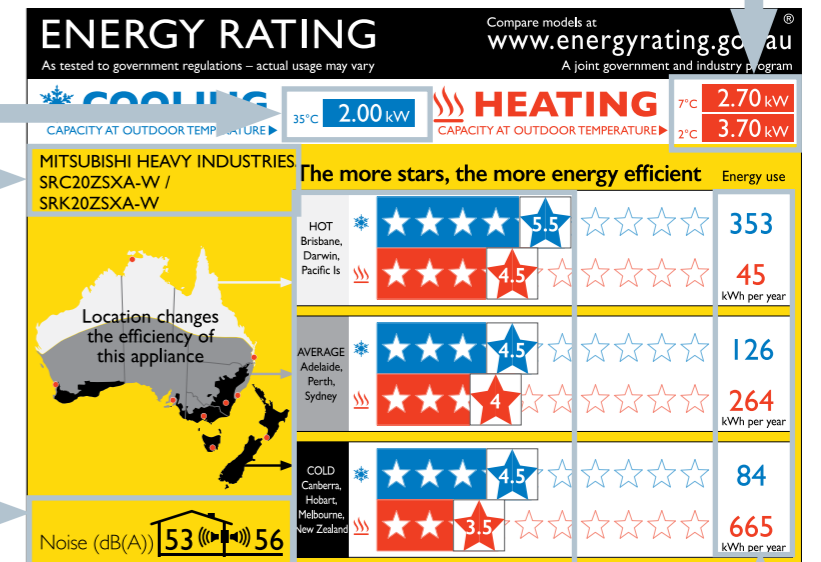
If you live in Brisbane, you are in a white area which is **HOT**. Refer to the white **HOT** ratings.

If you live in Sydney, you are in a grey area which is **AVERAGE**. Refer to the grey **AVERAGE** ratings.

If you live in Melbourne, you are in a **COLD** region and should refer to the black **COLD** ratings.

THIS TELLS YOU HOW ELECTRICITY THE SYSTEM WILL USE EACH YEAR FOR COOLING AND HEATING

The lower the kWh used, the lower the cost to run the system. If you know your electricity tariff you can multiply it by these figures to estimate running costs.



Optional Control Solutions



RC-EXZ3A WIRED CONTROLLER

- Large, 3.8" backlit LCD touch screen with easy to navigate menu.
- Control the set temperature, operation mode and fan speed.
- Access timer and scheduling functions.
- Access additional features including Home Leave mode, Silent Mode, High Power mode plus more.
- Multi-language display (6 languages)

**Requires SC-BIKN2-E kit (sold separately) for use with wall mounted, bulkhead and floor standing systems. Not applicable to SRK-ZMP series.
***Function limitations may apply.



RC-E5 WIRED CONTROLLER

- LCD display.
- Control the set temperature, operation mode and fan speed.
- Access timer and scheduling functions.

**Requires SC-BIKN2-E kit (sold separately) for use with wall mounted, bulkhead and floor standing systems. Not applicable to SRK-ZMP series.
***Function limitations may apply.



WI-FI SOLUTION

- Control your system using your smart device (iPhone, iPad, Android) via the AC Cloud Control app or internet browser
- Control the set temperature, operation mode and fan speed remotely.
- Control your system using Voice Command via your Google or Amazon smart speaker device.
- Set up 'favourite' scenes and activate them with a single tap.
- Set your system to respond to the weather, you arriving home, calendar events + more**.
- Receive instant notifications and email updates**

*Requires MH-AC-WIFI-1 Wi-Fi adaptor (sold separately) for use with split systems.
**In conjunction with IFTTT and other apps (must be downloaded separately).
Some additional functions may not be available via AC Cloud Control app.
The system's On/Off timer, weekly timer and sleep timer are disabled if a Wi-Fi accessory is connected.
Similar functions can be set via the AC Cloud App.

AC Cloud Control



Compatible with



Controlling your device with AC Cloud Control app requires aforementioned Wi-Fi adaptors and working internet or Wi-Fi connection. Google Account required for use with Google devices. Features and services may change without notice. Google is a trademark of Google LLC.

Wi-Fi Solution

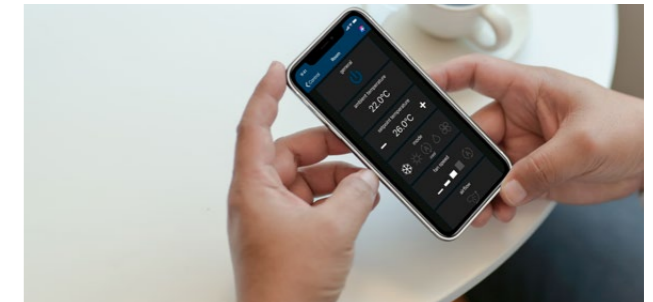
VOICE COMMAND CONTROL

Your MHI air conditioner can now be connected with any Alexa-enabled or Google Assistant voice control device. Turn your air conditioner on or off, change the operation mode or set the temperature using just your voice!



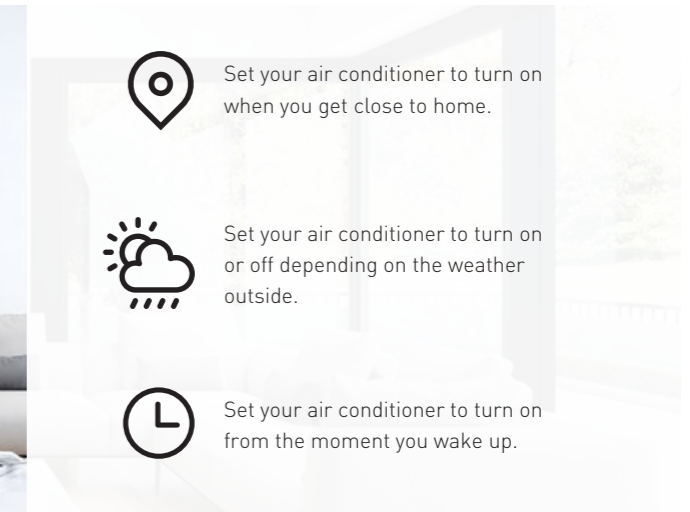
SMART DEVICE CONTROL

Turn your unit on or check the temperature while you're out and about. Can't remember if you turned your air conditioner off? Easily check and turn your unit off remotely using your smart device.



SMART HOME INTEGRATION

Tap into a universe of IFTTT (If This Then That) recipes and turn your MHI air conditioner into a smart air conditioner. IFTTT app allows to easily connect your air conditioner to 3rd party applications, services and devices including Gmail, Calendars, Weather, smartwatches plus thousands more, giving your unit advanced, smart functionality.



PRODUCT COMPATIBILITY

A compatible Wi-Fi adaptor is required to control your air conditioner via smart device or voice command technology. The Wi-Fi adaptor is sold separately and can be installed during the installation of your new MHI air conditioner or retrofitted to work with your existing MHI system. See below for product compatibility details.

| MH-AC-WIFI-1 ADAPTOR | SYSTEM TYPE | COMPATIBLE PRODUCTS |
|----------------------|----------------|---|
| | Wall Mounted | Avanti® series Avanti Plus® series Bronte® series |
| | Floor Standing | Wera™ series |
| | Bulkhead | Akari™ series |

Features and Functions

| | FUNCTION | DESCRIPTION | AVANTI | AVANTI COOL ONLY | AVANTI PLUS | BRONTE | BRONTE COOL ONLY | WERA | AKARI |
|-----------------------|-----------------------------|--|---|------------------|-------------|--------|------------------|------|-------|
| ENERGY SAVING | Fuzzy Auto Mode | Uses algorithms to determine the best operating mode, temperature and automatically adjusts the inverter frequency. | ● | ● | ● | ● | ● | ● | ● |
| | Eco Operation (Avanti PLUS) | Automatically adjusts the set temperature based on the detected human activity and switches the unit off when no activity is detected. | | | ● | | | | |
| | Eco Operation | The unit operates at a slightly reduced capacity to reduce power consumption while maintaining a comfortable room temperature. | ● | ● | | ● | ● | ● | ● |
| AIRFLOW | Jet Air Technology | Advanced fan blade technology, used in the development of jet engines, efficiently delivers a powerful yet quiet and evenly distributed airflow | ● | ● | ● | ● | ● | | |
| | High Power Operation | Provides 15mins of boosted power to quickly heat or cool your home. Perfect for when you first turn on the unit. | ● | ● | ● | ● | ● | ● | ● |
| | 3D Auto | Activates three independent motors which effectively and efficiently distributes an even airflow. | ● | ● | ● | ● | ● | | |
| | Auto Louvre Mode | Depending on whether the unit is in heating or cooling mode this will automatically set the louvre at the optimum angle for even air distribution. | ● | ● | ● | ● | ● | ● | |
| | Memory Louvre | Set the louvre at the desired angle. The unit will automatically return the louvres to this position on every subsequent start up. | ● | ● | ● | ● | ● | ● | |
| | Up/Down Louvre Swing | The horizontal louvres will automatically swing up and down for even air distribution. | ● | ● | ● | ● | ● | ● | |
| | Right/Left Louvre Swing | The vertical louvres will automatically swing left and right for even air distribution. | ● | ● | ● | ● | ● | ● | |
| | Air Outlet Selection | Select whether the airflow is distributed via the upper outlet, the lower outlet or both. | | | | | | ● | |
| | Positioning of Installation | Manually set the horizontal airflow direction to ensure even air distribution in situations where the indoor unit is installed in close proximity to a wall. | ● | ● | ● | ● | ● | | |
| | Allergen Clear Operation | Multi-stage operation that activates filter enzymes, neutralising captured allergens such as pollen, dust and hair. | ● | | ● | ● | | | |
| | Self-Clean Operation | Dries the indoor unit components by running the fan on ultra-low mode, preventing the growth of mould. Designed to be run regularly after use. | ● | ● | ● | ● | ● | ● | ● |
| | CLEAN AIR TECHNOLOGY | Photocatalytic Deodorizing Filter | Easy to clean filter that catches airborne particles before neutralising the odour causing molecules within them. | ● | ● | ● | ● | ● | ● |
| Allergen Clear Filter | | Captures airborne allergens such as hair, pollen and dust particles before neutralising them and any bacteria using specially formulated enzymes. | ● | | ● | ● | | ● | |
| Anti-Microbial Fan | | Specialised surface treatment that inhibits the growth of odour causing mould and microbes. | ● | ● | ● | ● | ● | | |

Features and Functions

| | FUNCTION | DESCRIPTION | AVANTI | AVANTI COOL ONLY | AVANTI PLUS | BRONTE | BRONTE COOL ONLY | WERA | AKARI | |
|-------------------------|------------------------------------|--|--|------------------|-------------|--------|------------------|------|-------|---|
| COMFORT AND CONVENIENCE | Dry Operation | Reduces humidity by removing moisture from the air without effecting the indoor temperature. | ● | ● | ● | ● | ● | ● | ● | |
| | Silent Operation | Set periods of time where the unit will operate with reduced noise levels, perfect for night time and an uninterrupted sleep. | ● | ● | ● | ● | ● | ● | ● | |
| | Night Setback | Designed for the colder seasons, this function ensures the room temperature is kept at around 10°C, even while unoccupied. | ● | | ● | ● | | ● | ● | |
| | Comfort Start-up | When using the ON-TIMER function, the unit will switch on slightly earlier than the SET time, to ensure the optimum temperature is reached at the ON TIME. | ● | ● | ● | ● | ● | ● | ● | |
| | Weekly Timer | Set up to 4 timer operations a day (max 28 per week). Once set, the unit will turn on and off at the specified times of the day repeatedly. | ● | ● | ● | ● | ● | ● | ● | |
| | Sleep Timer | Set a pre-determined amount of time between 30 and 240 mins that your unit will operate for before switching off. | ● | ● | ● | ● | ● | ● | ● | |
| | On/Off Timer | Set your unit to turn on and off once, at specific times, within a 24 hour period. Unit will then turn on and off at the specified times every day. | ● | ● | ● | ● | ● | ● | ● | |
| | Preset Operation | The desired preset operation mode can be enabled with a single touch of a button. | ● | ● | ● | | | | | |
| | Child Lock | Lock the remote control to prevent little ones from changing functions and other settings. Useful for families with curious young children. | ● | ● | ● | ● | ● | ● | ● | |
| | LED Brightness Adjustment | Adjust the brightness of the LED display on the indoor unit to minimise disturbance and ensure a good nights sleep. | ● | ● | ● | | | | | |
| | Motion Sensor | Automatically adjusts the set temperature based on human activity detected in the room. Switches the unit off when no activity is detected to save energy. | | | ● | | | | | |
| | Auto Operation | The unit will automatically select from heating, cooling or dry operation mode. | ● | ● | ● | ● | ● | ● | ● | |
| | MAINTENANCE & PREVENTION FUNCTIONS | Microcomputer -Operated Defrosting | Automatically activated during low ambient temperatures to prevent the frosting of the outdoor heat exchanger. | ● | | ● | ● | | ● | ● |
| | | Self-Diagnostic Function | In the unlikely event of a fault the internal micro-computer automatically runs a diagnostic of the system. This enables a service agent to quickly isolate and repair any issues. | ● | ● | ● | ● | ● | ● | ● |
| Back-up Switch | | If the remote control fails, the unit can be operated via an on/off switch on the indoor unit. | ● | ● | ● | ● | ● | ● | ● | |
| Auto Restart Function | | If there is a temporary loss of power, the unit will automatically restart in the same operating mode it was in when power is restored. | ● | ● | ● | ● | ● | ● | ● | |
| Removable Cover Panel | | Removable front cover allowing access for easy maintenance and cleaning. | ● | ● | ● | ● | ● | ● | ● | |

PRODUCT SPECIFICATIONS
AVANTI® SERIES

| CAPACITY | | 2.0kW | 2.5kW | 2.5kW | 3.5kW | 3.5kW (Cool Only) | 3.5kW | 3.5kW (Cool Only) | 5.0kW | 5.0kW (Cool Only) | |
|---|---|--|-------------------------|-------------------------|-------------------------|-------------------|-------------------------|-------------------|-------------------------|-------------------|--|
| Indoor | | SRK20ZSA-W / DXK06ZSA-W | SRK25ZSA-W / DXK09ZSA-W | SRK25ZSA-W / DXK09ZSA-W | SRK35ZSA-W / DXK12ZSA-W | SRK13YSA-W | SRK35ZSA-W / DXK12ZSA-W | SRK13YSA-W | SRK50ZSA-W / DXK18ZSA-W | SRK18YSA-W | |
| Outdoor | | SRC20ZSA-W / DXC06ZSA-W | SRC25ZSA-W / DXC09ZSA-W | SRC25ZSA-W / DXC09ZSA-W | SRC35ZSA-W / DXC12ZSA-W | SRC13YSA-W | SRC35ZSA-W / DXC12ZSA-W | SRC13YSA-W | SRC50ZSA-W / DXC18ZSA-W | SRC18YSA-W | |
| Power Source (Outdoor Unit) | | 1 Phase 240V 50Hz | | | | | | | | | |
| Nominal Capacity (Range) | Cooling T1 | 2.0 (0.9-3.0) | 2.5 (0.9-3.5) | 2.5 (0.9-3.5) | 3.5 (0.9-4.4) | 3.5 (0.9-4.4) | 3.5 (0.9-4.4) | 3.5 (0.9-4.4) | 5.0 (1.2-5.5) | 5.0 (1.2-5.5) | |
| | Heating H1 | 2.7 (1.0-4.2) | 3.2 (0.9-5.2) | 3.2 (0.9-5.2) | N/A | N/A | N/A | N/A | 5.8 (1.2-6.6) | N/A | |
| Power Consumption | Heating H2 | 3.2 | 3.95 | 3.95 | 4.0 | 4.0 | 4.0 | 4.0 | 5.2 | N/A | |
| | Cooling T1 | 0.41 (0.18-0.81) | 0.51 (0.18-0.88) | 0.51 (0.18-0.88) | 0.82 (0.18-1.27) | 0.82 (0.18-1.27) | 0.82 (0.18-1.27) | 0.82 (0.18-1.27) | 1.39 (0.27-1.86) | 1.39 (0.27-1.86) | |
| Maximum Power Consumption | Heating H1 | 0.56 (0.20-1.12) | 0.65 (0.21-1.43) | 0.65 (0.21-1.43) | 0.81 (0.21-1.44) | 0.81 (0.21-1.44) | 0.81 (0.21-1.44) | 0.81 (0.21-1.44) | 1.49 (0.28-1.97) | N/A | |
| | Cooling T1 | 1.65 | 1.65 | 1.65 | 1.65 | 1.65 | 1.65 | 1.65 | 2.68 | 2.68 | |
| Running Current | Cooling T1 | 2.1 | 2.5 | 2.5 | 2.5 | 2.5 | 2.5 | 2.5 | 3.7 | 3.7 | |
| | Heating H1 | 2.7 | 3.0 | 3.0 | N/A | N/A | N/A | N/A | 6.3 | N/A | |
| Inrush Current, Maximum Current | Cooling T1 | 2.8, 9.0 | 3.2, 9.0 | 3.2, 9.0 | 2.6, 9.0 | 2.6, 9.0 | 2.6, 9.0 | 2.6, 9.0 | 5.0, 14.5 | 5.0, 14.5 | |
| | Heating H1 | 4.88 | 4.90 | 4.90 | 4.90 | 4.90 | 4.90 | 4.90 | 3.60 | 3.60 | |
| EER | Outdoor | 4.82 | 4.92 | 4.92 | N/A | N/A | N/A | N/A | 3.89 | N/A | |
| | Indoor | 56 | 58 | 58 | 58 | 58 | 58 | 58 | 61 | 61 | |
| COP | Outdoor | 35-27-22-19 | 40-31-22-19 | 40-31-22-19 | 39-31-22-19 | 39-31-22-19 | 39-31-22-19 | 39-31-22-19 | 43-36-28-22 | 43-36-28-22 | |
| | Indoor | 44 | 45 | 45 | 45 | 45 | 45 | 45 | 49 | 47 | |
| Sound Power Level (JIS C9612) | Cooling | ★★★★ (4.5) | ★★★★ (4.5) | ★★★★ (4.5) | ★★★★ (4.5) | ★★★★ (4.5) | ★★★★ (4.5) | ★★★★ (4.5) | ★★★★ (3.5) | ★★★★ (3.5) | |
| | Heating | ★★★★ (3.5) | ★★★★ (3.5) | ★★★★ (3.5) | N/A | N/A | N/A | N/A | ★★★★ (3.5) | N/A | |
| Average | Cooling | ★★★★ (4) | ★★★★ (3.5) | ★★★★ (3.5) | ★★★★ (3.5) | ★★★★ (3.5) | ★★★★ (3.5) | ★★★★ (3.5) | ★★★★ (3) | ★★★★ (3) | |
| | Heating | ★★★★ (3.5) | ★★★★ (3) | ★★★★ (3) | N/A | N/A | N/A | N/A | ★★★★ (2.5) | N/A | |
| Cold | Cooling | ★★★★ (4) | ★★★★ (3.5) | ★★★★ (3.5) | ★★★★ (3.5) | ★★★★ (3.5) | ★★★★ (3.5) | ★★★★ (3.5) | ★★★★ (3) | ★★★★ (3) | |
| | Heating | ★★★★ (3) | ★★★★ (3) | ★★★★ (3) | ★★★★ (2.5) | ★★★★ (2.5) | ★★★★ (2.5) | ★★★★ (2.5) | ★★★★ (2) | N/A | |
| External dimensions (HXWXD) | Indoor | 290x870x230 | 290x870x230 | 290x870x230 | 290x870x230 | 290x870x230 | 290x870x230 | 290x870x230 | 290x870x230 | 290x870x230 | |
| | Outdoor | 540x780(+62)x290 | 540x780(+62)x290 | 540x780(+62)x290 | 540x780(+62)x290 | 540x780(+62)x290 | 540x780(+62)x290 | 540x780(+62)x290 | 640x800(+71)x290 | 640x800(+71)x290 | |
| Net weight | Indoor | 9.5 | 10 | 10 | 10 | 10 | 10 | 10 | 10 | 10 | |
| | Outdoor | 33 | 36 | 36 | 36 | 36 | 36 | 36 | 43.5 | 40 | |
| Airflow | Cooling (Indoor) | 165-127-93-83 | 182-140-88-78 | 182-140-88-78 | 205-152-117-78 | 205-152-117-78 | 205-152-117-78 | 205-152-117-78 | 213-175-113-93 | 213-175-113-93 | |
| | Heating (Indoor) | 190-142-108-93 | 237-182-110-88 | 237-182-110-88 | 250-193-117-88 | 250-193-117-88 | 250-193-117-88 | 250-193-117-88 | 253-198-152-113 | N/A | |
| Refrigerant (Type, Amount, Pre-charge Length) | kg | (R32) 0.68 | (R32) 0.78 | (R32) 0.78 | (R32) 0.78 | (R32) 0.78 | (R32) 0.78 | (R32) 0.75 | (R32) 1.05 | (R32) 1.05 | |
| | m | 15 | 15 | 15 | 15 | 15 | 15 | 15 | 15 | 15 | |
| Liquid line | mm | Ø6.35 | Ø6.35 | Ø6.35 | Ø6.35 | Ø6.35 | Ø6.35 | Ø6.35 | Ø6.35 | Ø6.35 | |
| | Gas line | Ø9.52 | Ø9.52 | Ø9.52 | Ø9.52 | Ø9.52 | Ø9.52 | Ø9.52 | Ø12.7 | Ø12.7 | |
| Connection Method | Flare connection | | | | | | | | | | |
| | Maximum Pipe Length (One Way) | 20 | | | | | | | | | |
| Max Vertical Height Diff. Between O.U. and I.U. | m | 10 (O.U. above I.U.) / 10 (O.U. below I.U.) | | | | | | | | | |
| | | 15 (O.U. above I.U.) / 15 (O.U. below I.U.) / 15 (O.U. below I.U.) | | | | | | | | | |
| Standard accessories | Allergen Clear & Photocatalytic Washable Deodorizing Filter | | | | | | | | | | |
| | Enzyme Filter & Photocatalytic Washable Deodorizing Filter | | | | | | | | | | |
| Optional parts | Interface kit (SC-BIKN2-E) / Wi-Fi Kit | | | | | | | | | | |
| | Enzyme Filter & Photocatalytic Washable Deodorizing Filter | | | | | | | | | | |
| Demand Response (AS4755) | Yes | Yes | Yes | Yes | Yes | Yes | Yes | Yes | Yes | Yes | |
| | Yes | Yes | Yes | Yes | Yes | Yes | Yes | Yes | Yes | Yes | |

* Operation data has been gathered in accordance with AS/NZS 3823 standards. For testing conditions please refer to Page 23.

PRODUCT SPECIFICATIONS
AVANTI PLUS® SERIES

| CAPACITY | | 2.0kW | 2.5kW | 3.5kW | 5.0kW | 6.0kW |
|---|---|---|------------------|------------------|------------------|------------------|
| Indoor | | SRK20ZSA-W | SRK25ZSA-W | SRK35ZSA-W | SRK50ZSA-W | SRK60ZSA-W |
| Outdoor | | SRC20ZSA-W | SRC25ZSA-W | SRC35ZSA-W | SRC50ZSA-W | SRC60ZSA-W |
| Power Source (Outdoor Unit) | | 1 Phase 240V 50Hz | | | | |
| Nominal Capacity (Range) | Cooling T1 | 2.0 (0.9-3.4) | 2.5 (0.9-3.8) | 3.5 (0.9-4.5) | 5.0 (1.0-6.2) | 6.1 (1.0-6.9) |
| | Heating H1 | 2.7 (0.8-5.5) | 3.2 (0.8-6.0) | 4.3 (0.8-6.8) | 6.0 (0.8-8.2) | 6.8 (0.8-8.8) |
| Power Consumption | Heating H2 | 3.7 | 4.2 | 4.7 | 6.0 | 6.8 |
| | Cooling T1 | 0.31 (0.16-0.76) | 0.44 (0.16-0.91) | 0.74 (0.16-1.27) | 1.24 (0.19-1.90) | 1.71 (0.19-2.50) |
| Maximum Power Consumption | Heating H1 | 0.47 (0.14-1.36) | 0.59 (0.14-1.54) | 0.90 (0.14-1.87) | 1.36 (0.20-2.46) | 1.65 (0.20-2.86) |
| | Cooling T1 | 1.92 | 1.92 | 1.92 | 2.9 | 2.9 |
| Running Current | Cooling T1 | 1.7 | 2.3 | 3.4 | 5.2 | 7.2 |
| | Heating H1 | 2.4 | 2.9 | 4.1 | 5.7 | 6.9 |
| Inrush Current, Maximum Current | Cooling T1 | 2.5, 9.0 | 3.0, 9.0 | 4.3, 9.0 | 5.0, 15.0 | 5.0, 15.0 |
| | Heating H1 | 6.45 | 5.68 | 4.73 | 4.03 | 3.57 |
| COP | Outdoor | 5.74 | 5.42 | 4.78 | 4.41 | 4.12 |
| | Indoor | 38-31-24-19 | 39-33-25-19 | 43-35-25-19 | 44-39-31-22 | 48-41-33-22 |
| Sound Power Level (JIS C9612) | Outdoor | 43 | 44 | 48 | 51 | 52 |
| | Indoor | ★★★★ (5.5) | ★★★★ (5) | ★★★★ (5) | ★★★★ (4) | ★★★★ (3.5) |
| Average | Cooling | ★★★★ (4.5) | ★★★★ (4.5) | ★★★★ (4.5) | ★★★★ (3.5) | ★★★★ (3.5) |
| | Heating | ★★★★ (4) | ★★★★ (4) | ★★★★ (4) | ★★★★ (3) | ★★★★ (3) |
| Cold | Cooling | ★★★★ (4.5) | ★★★★ (4.5) | ★★★★ (4.5) | ★★★★ (3.5) | ★★★★ (3.5) |
| | Heating | ★★★★ (3.5) | ★★★★ (3.5) | ★★★★ (3.5) | ★★★★ (2.5) | ★★★★ (2.5) |
| External dimensions (HXWXD) | Indoor | 305x920x220 | 305x920x220 | 305x920x220 | 305x920x220 | 305x920x220 |
| | Outdoor | 640x800(+71)x290 | 640x800(+71)x290 | 640x800(+71)x290 | 640x800(+71)x290 | 640x800(+71)x290 |
| Net weight | Indoor | 13 | 13 | 13 | 13 | 13 |
| | Outdoor | 43 | 43 | 43 | 45 | 45 |
| Airflow | Cooling (Indoor) | 188-152-100-83 | 203-167-112-83 | 218-180-122-83 | 238-207-130-90 | 272-223-148-90 |
| | Heating (Indoor) | 203-172-120-90 | 213-183-130-90 | 232-197-143-90 | 288-238-163-103 | 297-228-182-103 |
| Refrigerant (Type, Amount, Pre-charge Length) | kg | (R32) 1.2 | (R32) 1.2 | (R32) 1.2 | (R32) 1.3 | (R32) 1.3 |
| | m | 15 | 15 | 15 | 15 | 15 |
| Liquid line | mm | Ø6.35 | Ø6.35 | Ø6.35 | Ø6.35 | Ø6.35 |
| | Gas line | Ø9.52 | Ø9.52 | Ø9.52 | Ø12.7 | Ø12.7 |
| Connection Method | Flare connection | | | | | |
| | Maximum Pipe Length (One Way) | 25 | | | | |
| Max Vertical Height Diff. Between O.U. and I.U. | m | 15 (O.U. above I.U.) / 15 (O.U. below I.U.) | | | | |
| | | 20 (O.U. above I.U.) / 20 (O.U. below I.U.) | | | | |
| Standard accessories | Allergen Clear & Photocatalytic Washable Deodorizing Filter | | | | | |
| | Interface kit (SC-BIKN2-E) / Wi-Fi Kit | | | | | |
| Optional parts | Yes | Yes | Yes | Yes | Yes | Yes |
| | Yes | Yes | Yes | Yes | Yes | Yes |

* Operation data has been gathered in accordance with AS/NZS 3823 standards. For testing conditions please refer to Page 23.

BRONTE® SERIES

| CAPACITY | | 6.3kW | 7.1kW | 7.1kW (Cool Only) | 8.0kW | 9.5kW | 10.0kW | 10.0kW | |
|---|-------------------------------|---|-------------------------|--|--------------------------|---|------------------|------------------|-----|
| Indoor | SRK63ZRA-W / DXC21ZRA-W | SRK71ZRA-W / DXC24ZRA-W | SRK80ZRA-W / DXC28ZRA-W | SRK95ZRA-W / DXC33ZRA-W | SRK100ZRA-W / DXC38ZRA-W | SRK100ZRA-W / DXC33ZRA-W | SRK100ZRA-W | SRK100ZRA-W | |
| | SRK63ZRA-W / DXC21ZRA-W | SRK71ZRA-W / DXC24ZRA-W | SRK80ZRA-W / DXC28ZRA-W | SRK95ZRA-W / DXC33ZRA-W | SRK100ZRA-W / DXC38ZRA-W | SRK100ZRA-W / DXC33ZRA-W | SRK100ZRA-W | SRK100ZRA-W | |
| Power Source (Outdoor Unit) | | 1 Phase 240V 50Hz | | | | | | | |
| Nominal Capacity (Range) | Cooling T1 | 6.3 (1.2-7.4) | 7.1 (2.3-8.3) | 7.1 (2.3-8.3) | 8.0 (2.3-9.5) | 9.5 (2.5-10.6) | 10.0 (4.0-11.2) | 10.0 (4.0-11.2) | |
| | Heating H1 | 7.1 (0.8 -9.2) | 8.0 (2.0-10.9) | N/A | 9.0 (2.1-11.2) | 10.3 (3.2 -11.9) | 11.2 (4.0 -12.5) | 11.2 (4.0 -12.5) | |
| Power Consumption | Cooling H2 | 7.0 | 8.1 | N/A | 8.2 | 9.6 | 7.7 | 7.7 | |
| | Heating H1 | 1.58 (0.2-2.5) | 1.84 (0.48-2.4) | 1.84 (0.48-2.4) | 2.22 (0.48-3.1) | 2.56 (0.5-3.2) | 3.19 | 3.19 | |
| Maximum Power Consumption | Cooling T1 | 1.60 (0.16-2.8) | 2.02 (0.4-3.4) | N/A | 2.40 (0.40-3.40) | 2.64 (0.6-3.7) | 3.04 | 3.04 | |
| | Heating H1 | 2.90 | 3.65 | 3.65 | 3.65 | 3.80 | 6.4 | 10.20 | |
| Running Current | Cooling T1 | 6.7 | 7.8 | 7.8 | 9.4 | 10.8 | 14.3 | 4.8 | |
| | Heating H1 | 6.7 | 8.6 | N/A | 10.2 | 11.1 | 13.6 | 4.6 | |
| Inrush Current, Maximum Current | Cooling T1 | 6.7, 14.5 | 8.6, 17.0 | 7.8, 17.0 | 10.2, 17.0 | 11.1, 17.5 | 5, 24 | 5, 15 | |
| | Heating H1 | 3.99 | 3.86 | 3.86 | 3.60 | 3.71 | 3.13 | 3.13 | |
| Sound Power Level (JIS C9612) | Cooling T1 | 4.44 | 3.96 | N/A | 3.75 | 3.90 | 3.68 | 3.68 | |
| | Heating H1 | 64 | 65 | 65 | 68 | 69 | 69 | 69 | |
| Sound Pressure Level (JIS C9612) | Indoor | 44-39-35-25 | 43-40-36-24 | 43-40-36-24 | 46-43-38-25 | 48-45-40-26 | 48-45-40-27 | 48-45-40-27 | |
| | Outdoor | 54 | 53 | 53 | 56 | 57 | 54 | 54 | |
| Energy Label (GEMS 2019) | Hot | ★★★★ (4) | ★★★★ (3.5) | ★★★★ (3.5) | ★★★★ (3.5) | ★★★★ (3.5) | ★★★★ (3) | ★★★★ (3) | |
| | Average | ★★★★ (3.5) | ★★★★ (3) | N/A | ★★★★ (3) | ★★★★ (2.5) | ★★★★ (2.5) | ★★★★ (2.5) | |
| Cold | Cooling | ★★★★ (3) | ★★★★ (3.5) | ★★★★ (3.5) | ★★★★ (3) | ★★★★ (3) | ★★★★ (2.5) | ★★★★ (2.5) | |
| | Heating | ★★★★ (3.5) | ★★★★ (3) | N/A | ★★★★ (2.5) | ★★★★ (2) | ★★★★ (1.5) | ★★★★ (1.5) | |
| External dimensions (HXWXD) | Indoor | 339x1197x262 | 339x1197x262 | 339x1197x262 | 339x1197x262 | 339x1197x262 | 339x1197x262 | 339x1197x262 | |
| | Outdoor | 640x800(+71)x290 | 750x880(+88)x340 | 750x880(+88)x340 | 750x880(+88)x340 | 845x970(+89)x370 | 845x970x370 | 845x970x370 | |
| Net weight | Indoor | 15.5 | 15.5 | 15.5 | 15.5 | 16.5 | 16.5 | 16.5 | |
| | Outdoor | 45 | 58 | 58 | 58 | 70.5 | 77 | 78 | |
| Airflow | Cooling (Indoor) | 342-301-262-173 | 342-310-270-174 | 342-310-270-174 | 383-345-300-182 | 408-355-293-173 | 408-355-293-173 | 408-355-293-173 | |
| | Heating (Indoor) | 392-317-275-218 | 425-330-288-222 | N/A | 450-363-315-234 | 458-386-318-227 | 458-386-318-227 | 458-386-318-227 | |
| Refrigerant (Type, Amount, Pre-charge Length) | Quantity | (R32) 1.25 | (R32) 1.6 | (R32) 1.6 | (R32) 1.6 | (R32) 2.0 | (R32) 3.3 | (R32) 3.3 | |
| | Pre-Charged to Pipe | 15 | 15 | 15 | 15 | 15 | 30 | 30 | |
| Installation Data | Liquid line | Ø6.35 | Ø6.35 | Ø6.35 | Ø6.35 | Ø9.52 | Ø9.52 | Ø9.52 | |
| | Gas line | Ø12.70 | Ø15.88 | Ø15.88 | Ø15.88 | Ø15.88 | Ø15.88 | Ø15.88 | |
| Connection Method | Flare connection | Flare connection | | | | | | | |
| | Maximum Pipe Length (One Way) | 30 | | | | | | | |
| Max Vertical Height Diff. Between O.U. and I.U. | Indoor | 20 (O.U. above I.U.) / 20 (O.U. below I.U.) | | | | | | | |
| | Outdoor | 50 (O.U. above I.U.) / 15 (O.U. below I.U.) | | | | | | | |
| Standard accessories | | Allergen Clear & Photocatalytic Washable Deodorizing Filter | | Enzyme filter & Photocatalytic Washable Deodorizing Filter | | Allergen Clear & Photocatalytic Washable Deodorizing Filter | | | |
| Optional parts | | Interface kit (SC-BIKN2-E) / Wi-Fi Kit | | | | | | | |
| Demand Response (AS4755) | | Yes | Yes | Yes | Yes | Yes | Yes | Yes | Yes |

* Operation data has been gathered in accordance with AS/NZS 3823 standards. For testing conditions please refer to Page 22.

WERA™ SERIES

| CAPACITY | | 2.5kW | 3.5kW | 5.0kW | |
|---|-------------------------------|---|------------------|------------------|-----|
| Indoor | SRF25ZS-W | SRF35ZS-W | SRF50ZSX-W | SRF60ZSX-W | |
| | SRF25ZS-W | SRF35ZS-W | SRF50ZSX-W | SRF60ZSX-W | |
| Power Source (Outdoor Unit) | | 1 Phase 240V 50Hz | | | |
| Nominal Capacity (Range) | Cooling T1 | 2.5 (0.9-3.2) | 3.5 (0.9-4.1) | 5.0 (1.1-5.6) | |
| | Heating H1 | 3.4 (0.9-4.7) | 4.5 (0.8-5.2) | 6.0 (0.8-7.4) | |
| Power Consumption | Cooling T1 | 3.45 | 3.80 | 5.60 | |
| | Heating H1 | 0.50 (0.17-0.82) | 0.82 (0.18-1.33) | 1.32 (0.19-1.90) | |
| Maximum Power Consumption | Cooling T1 | 0.74 (0.19-1.29) | 1.12 (0.19-1.53) | 1.58 (0.19-2.34) | |
| | Heating H1 | 1.65 | 1.65 | 2.90 | |
| Running Current | Cooling T1 | 2.5 | 3.7 | 5.6 | |
| | Heating H1 | 3.4 | 4.9 | 6.6 | |
| Inrush Current, Maximum Current | Cooling T1 | 3.6, 9.0 | 5.0, 9.0 | 5.0, 15.0 | |
| | Heating H1 | 5.00 | 4.27 | 3.79 | |
| Sound Power Level (JIS C9612) | Cooling T1 | 4.59 | 4.02 | 3.80 | |
| | Outdoor | 60 | 63 | 63 | |
| Sound Pressure Level (JIS C9612) | Indoor | 37-32-29-26 | 40-35-33-29 | 46-38-33-28 | |
| | Outdoor | 46 | 50 | 51 | |
| Energy Label (GEMS 2019) | Hot | ★★★★ (4) | ★★★★ (4) | ★★★★ (3.5) | |
| | Average | ★★★★ (3.5) | ★★★★ (3) | ★★★★ (3) | |
| Cold | Cooling | ★★★★ (3) | ★★★★ (3.5) | ★★★★ (3) | |
| | Heating | ★★★★ (3.5) | ★★★★ (2.5) | ★★★★ (2.5) | |
| External dimensions (HXWXD) | Indoor | 600x860x238 | 600x860x238 | 600x860x238 | |
| | Outdoor | 540x780(+62)x290 | 540x780(+62)x290 | 640x800(+71)x290 | |
| Net weight | Indoor | 18 | 19 | 19 | |
| | Outdoor | 34.5 | 34.5 | 45 | |
| Airflow | Cooling (Indoor) | 150-126-111-96 | 153-130-121-106 | 192-160-123-110 | |
| | Heating (Indoor) | 175-136-128-110 | 178-138-135-123 | 200-167-157-127 | |
| Installation Data | Quantity | (R32) 0.78 | (R32) 0.78 | (R32) 1.30 | |
| | Pre-Charged to Pipe | 15 | 15 | 15 | |
| Connection Method | Liquid line | Ø6.35 | Ø6.35 | Ø6.35 | |
| | Gas line | Ø9.52 | Ø9.52 | Ø12.7 | |
| Standard accessories | Flare connection | Flare connection | | | |
| | Maximum Pipe Length (One Way) | 20 | | | |
| Max Vertical Height Diff. Between O.U. and I.U. | Indoor | 10 (O.U. above I.U.) / 10 (O.U. below I.U.) | | | |
| | Outdoor | 20 (O.U. above I.U.) / 20 (O.U. below I.U.) | | | |
| Optional parts | | Allergen Clear & Photocatalytic Washable Deodorizing Filter | | | |
| Demand Response (AS4755) | | Yes | Yes | Yes | Yes |

* Operation data has been gathered in accordance with AS/NZS 3823 standards. For testing conditions please refer to Page 22.

THE EXPERTS IN AIR

mhiaa.com.au

ABN 92 133 980 275

Australia:

Phone: **1300 138 007**

NSW & Head Office

Block E, 391 Park Road, Regents Park NSW 2143

Victoria

2/15 Howleys Road, Notting Hill VIC 3168

Brisbane

5/26 Flinders Parade, North Lakes QLD 4509

Adelaide

T50 Innovation House, Mawsons Lakes Boulevard, Mawsons Lakes SA 5095

Townsville

1/37 Ross River Road, Mysterton QLD 4812

Western Australia

1/15-17 Capital Road, Malaga WA 6090

Mitsubishi Heavy Industries Air-conditioners Australia, Pty. Ltd.

MOVE THE WORLD FORWARD  **RD MITSUBISHI
HEAVY
INDUSTRIES
GROUP**