



aps **DB** Ultimate

DB Ultimate Distribution Boards

Custom designed for the demands
of Australian industry

DB Ultimate distribution boards are purpose-built for Siemens circuit breakers and feature an enclosure by the world's leading supplier of innovative enclosure technology, Rittal.

Quality | Flexibility | Compliance | Intelligence



Enclosure by **RITTAL**

and featuring **SIEMENS** **KATKO** **Weidmüller**

apsindustrial.com.au/db-ultimate

Contents

Introducing the 'DB Ultimate' Range	3
Features	4
Feature Overview	5
DB Selection Guide	6
Unique Removable Gear Tray Assembly	7
Chassis	8
Main Switches	9
Enclosure Sizes	10
Enclosure Accessory Modules	11
Miniature Circuit Breakers	12
RCBOs	13
Accessories	14
DB Configuration Tool	15



Enclosure by **RITTAL** and featuring **SIEMENS** **KATKO** **Weidmüller**

Introducing the 'DB Ultimate' range of distribution boards from APS Industrial

APS Industrial are proud to release the first range in what will become a complete family of 'DB' distribution boards that are custom designed for the demands of Australian industry and feature world-class technology and innovation.

As part of this initial release, the 'DB Ultimate' range of competitively priced distribution boards are exclusive to APS Industrial, purpose-built for compatibility with Siemens circuit breakers and feature an enclosure by the world's leading supplier of innovative enclosure technology, Rittal.

Combining the shared expertise and experience of these leading global manufacturers that also draws on KATKO switching technology and Weidmüller surge protection, the 'DB Ultimate' sets the benchmark for quality, flexibility, compliance and intelligence.

Ideally suited to high-end industrial applications, the 'DB Ultimate' is a true industrial distribution board designed for arduous and heavy-duty environments and packed full of standard and optional features.

In a move that will revolutionise distribution board assembly and installation, the 'DB Ultimate', within the 'DB family' of distribution boards also feature a unique removable one-piece gear tray assembly that enables full assembly and wiring independent of the enclosure itself. This exciting feature provides unparalleled flexibility in design, assembly, installation, commissioning and future retro-fitting.



QUALITY

Market leading enclosure and componentry to enable increased reliability, availability and reduced downtime.



FLEXIBILITY

Ultimate flexibility in design, assembly, installation, commissioning and future retrofitting.



COMPLIANCE

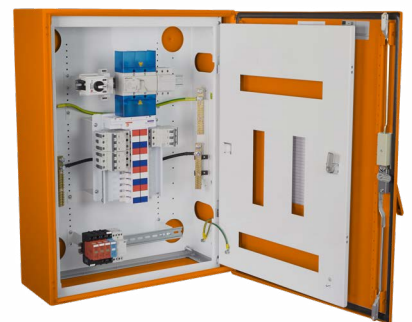
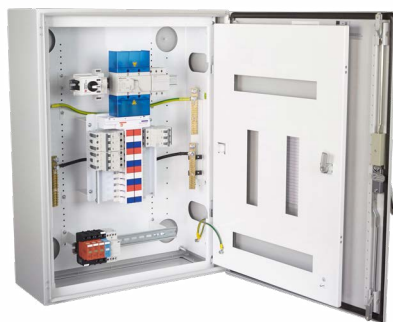
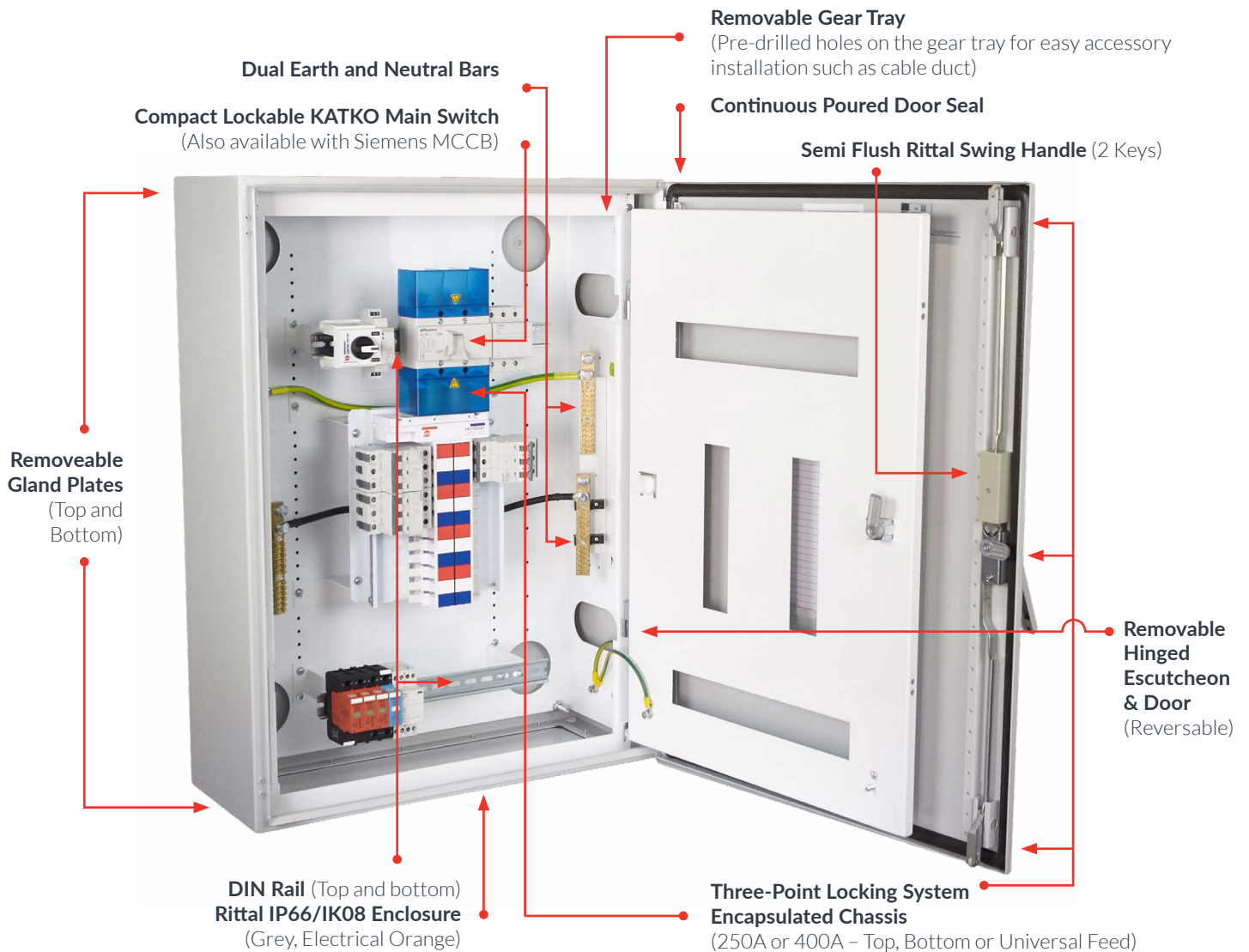
Custom designed for the demands of Australian industry and compliant to local standards.



INTELLIGENCE

Smart technology enabling greater connectivity, communication and performance.

Features



Enclosure by **RITTAL** and featuring **SIEMENS** **KATKO** **Weidmüller**

Feature Overview

IP RATING / IK RATING	IP66 / IK08
WIDTH	600mm
DEPTH (INCLUDING DOOR)	250mm
MILD STEEL COLOURS	RAL 7035 Grey, Electrical Orange
MATERIAL	1.5mm Mild Steel
TRIPLE SURFACE TREATMENT	▲
MCB TYPE	Siemens
MCB CHASSIS TYPE	Encapsulated or Isolating
MCB CHASSIS RATING	250A/400A
MCB CHASSIS - TOP, BOTTOM OR UNIVERSAL FEED	○
MCB POLE CAPACITY	18 - 96
SPLIT CHASSIS OPTION	○
SPARE HORIZONTAL DIN SPACES (TOP & BOTTOM)	12 & 18
DIN RAIL (TOP & BOTTOM)	▲
ISOLATOR MAIN SWITCH	KATKO 250A
MCCB MAIN SWITCH	○
MCCB TYPE	Siemens
DOOR HINGED & FIELD REVERSIBLE	▲
ESCUTCHEON HINGED & FIELD REVERSIBLE	▲
WHITE ESCUTCHEON	▲
WHITE REMOVABLE GEAR PLATE	▲
SEMI FLUSH SWING DOOR HANDLE	▲
DOOR LOCK - RITTAL 3524	▲
3 POINT LOCKING WITH ROD	▲
DOOR LOCK CL001	○
DOOR LOCK 92268	○
DOOR LOCK NON-LOCKING	○
PWD LOCK E-LOCK	○
PADLOCKABLE	○
EARTH AND NEUTRAL BARS (LINKED)	Both Sides
CABLE DUCTING BOTH SIDES OF CHASSIS	○
SPECIAL COLOURS	○
RAINHOOD COVER	○
PLINTH	○
FLUSH MOUNTING KIT	○
WALL MOUNTING	▲
REMOVABLE GLAND-PLATES (TOP AND BOTTOM)	▲
LEGEND CARD INSIDE FRONT DOOR	▲
GLAND-PLATES BRASS/ALUMINIUM	○
BAYING KIT MAINTAINING IP66	○
GLOBAL STANDARDS APPROVALS	▲
MARINE APPROVALS	▲
ACCESSORY BOARDS MAINTAINING IP66 (600MM)	▲
CAD BLOCKS AVAILABLE	▲
OTHER VARIATIONS ON REQUEST	○

▲ Standard

○ Optional

DB Selection Guide

Follow this 6-step process to build the perfect distribution board solution

Step 1

Select Chassis Size

How many poles will your distribution board require? (18-96)



Step 2

Select Main Switch or MCCB

Choose from a standard heavy duty main switch from KATKO or an MCCB switch from Siemens



Step 3

Select DB Model and Enclosure Size

Based on application/installation requirements and model features including size and colour



Step 4

Select MCBs and RCBOs

The DB range of distribution boards have been purpose built to house Siemens MCBs and RCBOs



Step 5

Select any required accessories

Choose from an extensive range including measuring devices, emergency test lighting kits, surge protection, CT blocks and fuse systems



Step 6

Contact APS Industrial to place your order

Contact your local sales representative, call 1300 309 303 or visit apsindustrial.com.au/dbconfigurator



Thank you for submitting your enquiry.

One of our local team will soon be in contact to further discuss your requirements.

In the meantime, if you have any questions please contact us here

[REQUEST ANOTHER DISTRIBUTION BOARD](#)

Unique Removable Gear Tray Assembly

In a move that will revolutionise distribution board assembly and installation, the 'DB Ultimate', within the 'DB family' of distribution boards feature a unique removable one-piece assembly that enables full assembly and wiring independent of the enclosure itself. This exciting feature provides unparalleled flexibility in design, assembly, installation, commissioning and future retro-fitting.



1. Enclosure

Select your enclosure size and material based on application/installation requirements and model features.



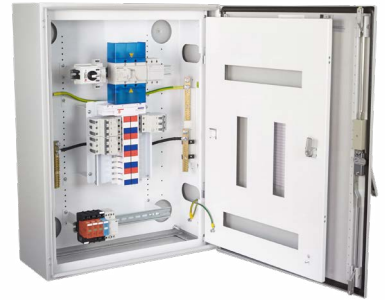
2. Gear Tray

Each APS DB Ultimate comes with a high quality gear tray that can be removed from and inserted into the enclosure.



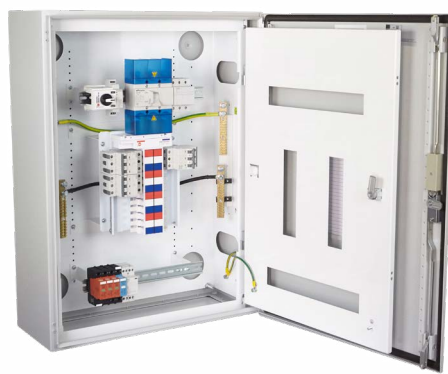
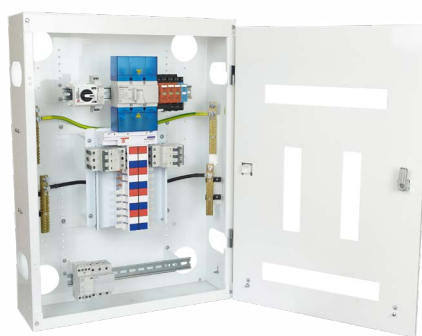
3. Assemble Gear Tray

Assemble gear tray with required components independent of the enclosure for increased time savings.



4. Insert Assembled Gear Tray into the enclosure

This enables building of DBs independent of the enclosure itself for added flexibility.



Enclosure by **RITTAL** and featuring **SIEMENS** **KATKO** **Weidmüller**

Chassis

Determine how many poles your distribution board will require and then select from the custom built range of chassis below.

POLES	DESCRIPTION	PART NUMBER
-------	-------------	-------------

Encapsulated - 250A MCB chassis (rated at 25kA for 0.1sec & 10kA for 1sec and suitable for use with 5SY MCBS)



18	18 Pole, 250 Amp, Top Feed	ENCY25018T
24	24 Pole, 250 Amp, Top Feed	ENCY25024T
30	30 Pole, 250 Amp, Top Feed	ENCY25030T
36	36 Pole, 250 Amp, Top Feed	ENCY25036T
42	42 Pole, 250 Amp, Top Feed	ENCY25042T
48	48 Pole, 250 Amp, Top Feed	ENCY25048T
60	60 Pole, 250 Amp, Top Feed	ENCY25060T
72	72 Pole, 250 Amp, Top Feed	ENCY25072T
84	84 Pole, 250 Amp, Top Feed	ENCY25084T
96	96 Pole, 250 Amp, Top Feed	ENCY25096T

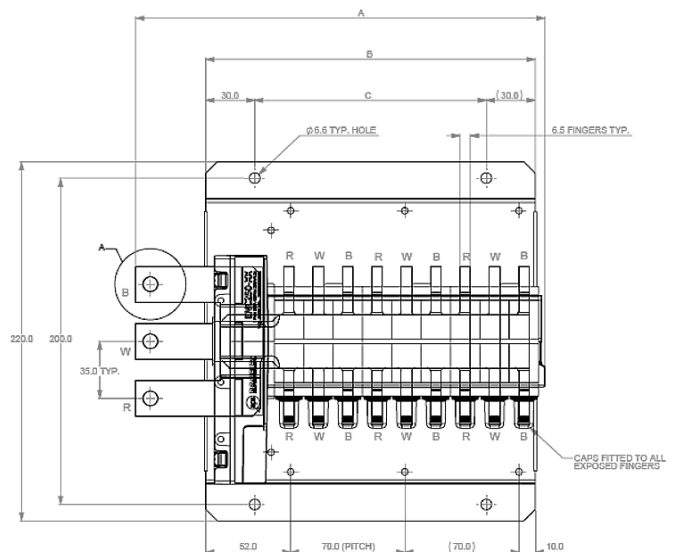
Note: 400 A Chassis available on request. Change "T" to "U" for UNI or "B" for Bottom Feed.

Isolating - 250A MCB chassis (rated at 30kA for 0.1sec and suitable for use with 5SY MCBS)



18	MCB Isolating Chassis 250A 18 Pole Top Feed	ISCY25018T
24	MCB Isolating Chassis 250A 24 Pole Top Feed	ISCY25024T
30	MCB Isolating Chassis 250A 30 Pole Top Feed	ISCY25030T
36	MCB Isolating Chassis 250A 36 Pole Top Feed	ISCY25036T
42	MCB Isolating Chassis 250A 42 Pole Top Feed	ISCY25042T
48	MCB Isolating Chassis 250A 48 Pole Top Feed	ISCY25048T
60	MCB Isolating Chassis 250A 60 Pole Top Feed	ISCY25060T
72	MCB Isolating Chassis 250A 72 Pole Top Feed	ISCY25072T
84	MCB Isolating Chassis 250A 84 Pole Top Feed	ISCY25084T
96	MCB Isolating Chassis 250A 96 Pole Top Feed	ISCY25096T

DIMENSIONAL DETAILS					
PART NUMBER	NO. OF POLES	DIMENSION			
		A	B	C	D
ENCY25018T	18	251	202	142	160
ENCY25024T	24	305	256	196	214
ENCY25030T	30	359	310	250	268
ENCY25036T	36	413	364	304	322
ENCY25042T	42	467	418	358	376
ENCY25048T	48	521	472	412	430
ENCY25060T	60	629	580	520	538
ENCY25072T	72	737	688	628	646
ENCY25084T	84	845	796	736	754
ENCY25096T	96	953	904	844	862



Enclosure by **RITTAL** and featuring **SIEMENS** **KATKO** **Weidmüller**

Main Switches

Standard - KATKO Main Switch

The leading range of KATKO Load Break Switches feature as standard in all DB distribution boards promising the highest performance and reliability.



- | Compact size
- | Switch technology by means of silver contacts ensures a
- | Long life expectancy and safe use in demanding conditions
- | 3-Pole and 4-Pole
- | Available with terminal covers and phase barriers (LS/VS)

TYPE	AC-21	400 V	AC-22	400 V	AC-23	400 V	EAN-CODE	WEIGHT KG
		415 V		415 V		415 V		
	IE / A		IE / A		IE / A	P / KW	6419410...	
EVA3250LS/VS	250 A		250 A		200 A	90 kW	...203321	0.9

Optional - Siemens MCCB

3VA12/13 MCCB - TM240 (3 Pole, 36kA at 415V)

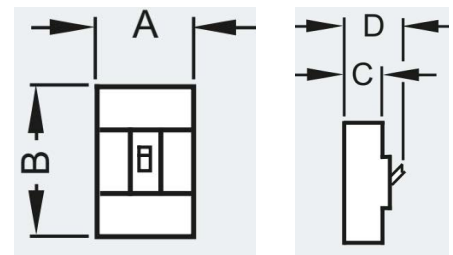
Line protection - Standard thermal-magnetic trip unit (TM240 - ATAM)*



- | Modular, well-conceived, and highly variable system
- | High system availability thanks to an excellent selectivity concept
- | Integrated measured value acquisition
- | Simple integration into higher-level energy management and automation systems
- | Comprehensive range of accessories for flexible function expansions
- | Minimal space requirements thanks to a highly compact design

FRAME SIZE (FS)	In (A) RATED	Ir (A) SETTING	Ii (A) SETTING	PART NUMBER
2	160A	112 - 160A	800-1600A	3VA1216-4EF32-0AA0
	250A	175 - 250A	1250-2500A	3VA1225-4EF32-0AA0
	250A	-		3VA1225-1AA32-0AA0**
3	400A	280-400A	2000-4000A	3VA1340-4EF32-0AA0
	400A	-		3VA1340-1AA32-0AA0**

3VA1 MCCBs Dimensions				
A (3P)	A (4P)	B	C	D
105mm	140mm	158mm	70mm	88mm



Note:

* TM240 (Line Protection) = Adjustable Thermal (Ir), Adjustable Magnetic (Ii) - ATAM (LI)

** Non-auto

Enclosure Sizes

The true industrial distribution board that will perform in arduous and heavy-duty environments.



- | IP66 Protection Rating
- | Available in RAL 7035 Grey and Electrical Orange
- | 1.5mm Mild Steel
- | Encapsulated or Isolating MCB Chassis
- | 18-96 Pole
- | CAD Blocks Available
- | Semi Flush Rittal Swing Handle
- | 3 Point Locking With Rod
- | Reversible White Escutcheon and Hinged Door
- | Isolating Main Switch or MCCB Option
- | In-feed Earth and Neutral Bars

MAIN SWITCH	MCB POLE CAPACITY	ENCLOSURE WIDTH AND DEPTH	ENCLOSURE HEIGHT	PART NUMBER
KATKO 250A Isolating Main Switch (Encapsulated Chassis)	18	600mm x 250mm	800mm	ULT18MG250EKT
	24			ULT24MG250EKT
	30			ULT30MG250EKT
	36		1000mm	ULT36MG250EKT
	42			ULT42MG250EKT
	48			ULT48MG250EKT
	60			ULT60MG250EKT
	72		1200mm	ULT72MG250EKT
	84			ULT84MG250EKT
	96			ULT96MG250EKT

Part Number Configuration Guide

The below table has been prepared as your guide to configuring the right part number for your individual enclosure requirements. As an example, we have used the part number: ULT18MG250EKT

There are 3 inputs that you are able to substitute:

1. Replace "MG" with "MO" for Electrical Orange
2. Replace "E" with "I" for Isolating Chassis
3. Replace "K" with "CB" for MCCB Main Switch

ULT	18	MG	250	E	K	T	
TYPE	NUMBER OF POLES		COLOUR	MAIN SWITCH A	CHASSIS TYPE	SWITCH TYPE	CHASSIS FEED
ULT-Ultimate	18 - 18 Poles	48 - 48 Poles	MG - RAL 7035 Grey	250 - 250 A	E - Encapsulated	K - KATKO	T - Top
	24 - 24 Poles	60 - 60 Poles	MO - Electric Orange	400 - 400 A	I - Isolating	CB - Siemens MCCB	B - Bottom
	30 - 30 Poles	72 - 72 Poles					U - Universal
	36 - 36 Poles	84 - 84 Poles					
	42 - 42 Poles	96 - 96 Poles					

Commercial | Industrial



Manufacturing



Mining / Oil & Gas



Hospitals



Power / Energy



Water



Infrastructure

Enclosure by **RITTAL** and featuring **SIEMENS** **KATKO** **Weidmüller**

Enclosure Accessory Modules

Choose from our current range of accessories and spare parts (others are available so please enquire regarding your particular needs).

Accessory Module with Mounting Plate

An add-on module with mounting plate that enables greater flexibility when it comes to configuring your distribution board solutions (comes with gland plates top and bottom).



HEIGHT	WIDTH	DEPTH	COLOUR	PART NUMBER	INNER DOOR PART NUMBER
380mm	600mm	250mm	Grey	XAURE040212	XAU10390199
			Orange	XAURE040219	
600mm			Grey	XAURE040405	XAU10600199
			Orange	XAURE050205	

Empty DB Enclosure

If your distribution board requirements call for an enclosure without a gear tray and assembly we also offer a range of empty distribution board enclosures available in grey and electrical orange in multiple size variations.



HEIGHT	WIDTH	DEPTH	COLOUR	PART NUMBER
800mm	600mm	250mm	Grey	XAURE010206
			Orange	XAURE010208
1000mm			Grey	XAURE010210
			Orange	XAURE010212
1200mm			Grey	XAURE013362
			Orange	XAURE040204
1500mm			Grey	XAURE040206
			Orange	XAURE040208

Gear trays complete with eschutcheon, KATKO 250A Main Switch Chassis

The removable gear tray that comes standard with all APS DB Ultimate distribution boards is ideal for wiring and assembling a distribution board independent of the enclosure. This core feature offers increased application, flexibility and time savings.



HEIGHT	DESCRIPTION	PART NUMBER
800mm	Modular gear tray for 800mm high DB	DBGT800
1000mm	Modular gear tray for 1000mm high DB	DBGT1000
1200mm	Modular gear tray for 1200mm high DB	DBGT1200
1500mm	Modular gear tray for 1500mm high DB	DBGT1500



Enclosure by **RITTAL** and featuring **SIEMENS** **KATKO** **Weidmüller**

Miniature Circuit Breakers

The DB range of distribution boards have been purpose built to house the leading Siemens range of MCBs.

Suitable for use on chassis



RATED CURRENT	PART NUMBER	PART NUMBER
SINGLE POLE, 6KA		SINGLE POLE, 10KA
1A	5SY6101-7CC	5SY4101-7CC
2A	5SY6102-7CC	5SY4102-7CC
4A	5SY6104-7CC	5SY4104-7CC
6A	5SY6106-7CC	5SY4106-7CC
10A	5SY6110-7CC	5SY4110-7CC
16A	5SY6116-7CC	5SY4116-7CC
20A	5SY6120-7CC	5SY4120-7CC
25A	5SY6125-7CC	5SY4125-7CC
32A	5SY6132-7CC	5SY4132-7CC
40A	5SY6140-7CC	5SY4140-7CC
50A	5SY6150-7CC	5SY4150-7CC
63A	5SY6163-7CC	5SY4163-7CC

RATED CURRENT	27MM PITCH **
80A	5SP4180-7
100A	5SP4191-7
125A	5SP4192-7



DOUBLE POLE, 6KA		DOUBLE POLE, 10KA
1A	5SY6201-7CC	5SY4201-7CC
2A	5SY6202-7CC	5SY4202-7CC
4A	5SY6204-7CC	5SY4204-7CC
6A	5SY6206-7CC	5SY4206-7CC
10A	5SY6210-7CC	5SY4210-7CC
16A	5SY6216-7CC	5SY4216-7CC
20A	5SY6220-7CC	5SY4220-7CC
25A	5SY6225-7CC	5SY4225-7CC
32A	5SY6232-7CC	5SY4232-7CC
40A	5SY6240-7CC	5SY4240-7CC
50A	5SY6250-7CC	5SY4250-7CC
63A	5SY6263-7CC	5SY4263-7CC



TRIPLE POLE, 6KA		TRIPLE POLE, 10KA
1A	5SY6301-7CC	5SY4301-7CC
2A	5SY6302-7CC	5SY4302-7CC
4A	5SY6304-7CC	5SY4304-7CC
6A	5SY6306-7CC	5SY4306-7CC
10A	5SY6310-7CC	5SY4310-7CC
16A	5SY6316-7CC	5SY4316-7CC
20A	5SY6320-7CC	5SY4320-7CC
25A	5SY6325-7CC	5SY4325-7CC
32A	5SY6332-7CC	5SY4332-7CC
40A	5SY6340-7CC	5SY4340-7CC
50A	5SY6350-7CC	5SY4350-7CC
63A	5SY6363-7CC	5SY4363-7CC
80A	-	5SY4380-7CC



RATED CURRENT	27MM PITCH**
80A	5SP4380-7
100A	5SP4391-7
125A	5SP4392-7

Note: ** Available with Hybrid Chassis only.

Featuring **SIEMENS** MCBs

RCBOs

The DB range of distribution boards have been purpose built to house the leading Siemens range of RCBOs.

Single Pole RCBO, 10KA Type A 30mA (Long Body suitable for Standard Chassis Mount with 5SY MCB)



RATED CURRENT IN (A)	DESCRIPTION	PART NUMBER
6A	RCBO, Single Phase, 1 Pole, 10kA, 600mm Tail	5SU9304-7KK06
10A	RCBO, Single Phase, 1 Pole	5SU9304-7KK10
16A	RCBO, Single Phase, 1 Pole	5SU9304-7KK16
20A	RCBO, Single Phase, 1 Pole	5SU9304-7KK20
25A	RCBO, Single Phase, 1 Pole	5SU9304-7KK25
32A	RCBO, Single Phase, 1 Pole	5SU9304-7KK32
40A	RCBO, Single Phase, 1 Pole	5SU9304-7KK40

Single Phase RCBO, 6KA Type A 30mA (2 modules wide DIN Rail Mount) **



6A	RCBO, Single Phase, 2 Pole	5SU93547KK06
10A	RCBO, Single Phase, 2 Pole	5SU93547KK10
16A	RCBO, Single Phase, 2 Pole	5SU93547KK16
20A	RCBO, Single Phase, 2 Pole	5SU93547KK20
25A	RCBO, Single Phase, 2 Pole	5SU93547KK25
32A	RCBO, Single Phase, 2 Pole	5SU93547KK32
40A	RCBO, Single Phase, 2 Pole	5SU93547KK40

Note: ** Requires custom chassis.

Single Phase RCBO, 10kA Type A (2 modules wide DIN Rail Mount)**

6A	RCBO, Single Phase, 2 Pole	5SU93547KK06
10A	RCBO, Single Phase, 2 Pole	5SU93547KK10
16A	RCBO, Single Phase, 2 Pole	5SU93547KK16
20A	RCBO, Single Phase, 2 Pole	5SU93547KK20
25A	RCBO, Single Phase, 2 Pole	5SU93547KK25
32A	RCBO, Single Phase, 2 Pole	5SU93547KK32
40A	RCBO, Single Phase, 2 Pole	5SU93547KK40

Note: These can not have auxiliaries mounted. ** Requires custom chassis.

RCDS Type A 30mA (DIN Rail Mount)



25A	Type A 25A 1+N-POLE 30MA 230V 2MW	5SV33126
40A	Type A 40A 1+N-POLE 30MA 230V 2MW	5SV33146
63A	Type A 63A 1+N-POLE 30MA 230V 2MW	5SV33166
40A	Type A 40A 3+N-POLE 30MA 400V 4MW	5SV33446
80A	Type A 80A 3+N-POLE 30MA 400V 4MW	5SV33476

Note: These can not have auxiliaries mounted.

Featuring **SIEMENS** RCBOs

Accessories

To complete your customised distribution board solution, choose from a full range of accessories that further unlock intelligence and performance capability.

CT Blocks



The 3-phase 7KT12 current transformer can be used in distribution boards according to DIN 43880. The measuring leads are routed vertically through the standard mounting rail.

DESCRIPTION	PART NUMBER
Current Transformer AC 3X150/5A, Depth=70Mm	7KT1202

7KM PAC2200 measuring devices (Integrated web server)



The 7KM PAC measuring devices precisely and reliably measure the energy values for infeeds, outgoing feeders or individual loads. They not only provide important information about the electrical power distribution but also key measured values for assessing the system states and power quality.

CONTROL VOLTAGE	RATED CURRENT IN (A)	VOLTAGE RANGE	MOUNTING	COMMUNICATIONS	PART NUMBER
Self Powered	CT/1A or /5A	480/277 V 3 AC, 50/60 Hz	DIN Rail Mount with display	Modbus TCP	7KM2200-2EA30-1EA1
Self Powered	Direct up to 65A	480/277 V 3 AC, 50/60 Hz	DIN Rail Mount with display	Modbus TCP	7KM2200-2EA40-1EA1

Surge Diverters

Surge protection is a critical component of this safeguard and by investing in surge protection you create operational reliability.



DESCRIPTION	PART NUMBER
VPU II 3 280V/40kA Surge Arrester 3 Phase	1352700000
VPU II 3+IR 280V/40kA Surge Arrester 3 Phase	1352670000
VPU II 1+IR 280V/40kA Surge Arrester 3 Phase	1352640000

Fuse Systems

As a pioneer of fuse systems, Siemens offer you the complete range of devices for protecting cables and electrical devices and systems in case of overload and short-circuit.

32A Fuse Holders



32A FUSE HOLDERS, 10X38MM	PHASES	PART NUMBER
3NW7013	1	3NW7211
3NW7033	3	3NW7231
3NW7063	3+N	3NW7261

Cylindrical Fuses Class gG

SIZE	RATED CURRENT	PART NUMBER	SIZE	RATED CURRENT	PART NUMBER
10x38mm	1A	3NW60111	22x58mm	6A	3NW62051
10x38mm	2A	3NW60021	22x58mm	20A	3NW62071
10x38mm	4A	3NW60041	22x58mm	25A	3NW62101
10x38mm	6A	3NW60011	22x58mm	32A	3NW62121
10x38mm	10A	3NW60031	22x58mm	40A	3NW62171
10x38mm	16A	3NW60051	22x58mm	50A	3NW62201
10x38mm	20A	3NW60071	22x58mm	63A	3NW62221
10x38mm	35A	3NW60101	22x58mm	80A	3NW62241
10x38mm	32A	3NW60121	22x58mm	100A	3NW62301

Emergency Lighting Test Kits

The APS Industrial range of emergency light test kits fully complies to standards requirements. Both enclosed and switchboard mount options are available and the highest quality components are used to ensure reliable operation.



RATED CURRENT	DESCRIPTION	PART NUMBER
25A	Test/Reset, Timer & 4NC Contactor	SIEEMLTk25
40A	Test/Reset, Timer & 4NC Contactor	SIEEMLTk40

Enclosure by **RITTAL** and featuring **SIEMENS** **KATKO** **Weidmüller**

DB Configuration Tool

Simply visit apsindustrial.com.au/dbconfigurator to easily customise and submit your pricing enquiry in just a few clicks!



Fields marked with an * are required

1. DETAILS | 2. DB CONFIGURATOR | 3. DB OPTIONS | MCB / RCBO SELECTOR

Business Name *

Contact Name *

Phone *

Email *

Project

DB Name / ID

Quantity *

0

1. DETAILS | 2. DB CONFIGURATOR | 3. DB OPTIONS | MCB / RCBO SELECTOR

DB Type *

- Ultimate
- Essential

DB Colour *

- Grey (RAL 7035)
- Orange
- Other

DB Material *

- Mild Steel

Chassis Poles *

- 18 Pole
- 24 Pole
- 30 Pole
- 36 Pole
- 42 Pole
- 48 Pole
- 60 Pole
- 72 Pole

Chassis Amps *

- 250A
- 400A

Incomer Feed Type *

- Top
- Bottom

Enclosure Hinge Side *

- Left
- Right

Chassis Type *

- Encapsulated

Main Switch Type *

- Load Break Isolator

Main Switch Amps *

- 250A

Chassis Configurator *

- 3 Phase (R,W,B)
- 3 Phase + Neutral (R,W,B,N)
- Single Phase + Neutral (RN, WN, BN)
- DC (RBk, RBk, RBk)
- Custom (Split)

1. DETAILS | 2. DB CONFIGURATOR | 3. DB OPTIONS | MCB / RCBO SELECTOR

Lighting Control

Emergency Lighting Kit - 25A

Emergency Lighting Kit - 40A

Photo Electric Lighting Kit

Contactor / Relays

25A, 2 Pole

25A, 4 Pole

40A, 2 Pole

40A, 4 Pole

Metering (KWH)

- PAC 2200 (DIN)
- PAC 3200 (96mm x 96mm Panel)

Metering (AMPS)

- 50A
- 75A
- 100A
- 150A
- 200A
- 250A

Metering Connection

- Current Transformer, 5A
- Direct

Metering Communications

- Ethernet Modbus
- Profibus
- Modbus RTU
- N/A

Timers

- 1 Channel - 24/7
- 2 Channel - 24/7
- 4 Channel - Yearly

Fuses

- 1 Phase Fuse Holder 32A
- 3 Phase Fuse Holder 32A
- 1 Phase Fuse Holder 100A
- 3 Phase Fuse Holder 100A

Surge Protection

- 280V/40kA 3 Phase
- 280V/40kA 3 Phase + Neutral
- 280V/40kA Single Phase + Neutral

Accessory Box

Size

- 380 High
- 600 High

Fitting

- Top
- Bottom
- Supplied Loose

Escutcheon

- With Escutcheon
- Without Escutcheon



Thank you for submitting your enquiry.

One of our local team will soon be in contact to further discuss your requirements.

In the meantime, if you have any questions please contact us here

REQUEST ANOTHER DISTRIBUTION BOARD

apsindustrial.com.au/dbconfigurator



OUR LOCATIONS

National footprint with strategic local stockholdings.

APS Industrial is headquartered in Melbourne and in addition has a national network of offices in Adelaide, Perth, Sydney, Brisbane and Tasmania supported by strategic local stockholdings and expert technical and application knowledge.

apsindustrial.com.au

CONNECT WITH US



MELBOURNE

5-7 Corporate Ave,
Rowville, Melbourne VIC 3178

Ph: (03) 8514 3500
Sales: 1300 309 303
Email: vic@apsindustrial.com.au

SYDNEY

Unit P1, 10-16 South Street
Rydalmere, Sydney NSW 2116

Ph: (02) 8898 6200
Sales: 1300 309 303
Email: nsw@apsindustrial.com.au

BRISBANE

49 Borthwick Avenue,
Murarrie, Brisbane, QLD, 4172

Ph: (07) 3063 3100
Sales: 1300 309 303
Email: qld@apsindustrial.com.au

ADELAIDE

159-163 Caulfield Ave,
Clarence Gardens SA 5039

Ph: (08) 8111 5100
Sales: 1300 309 303
Email: sa@apsindustrial.com.au

PERTH

5 Glyde Court, Malaga,
Malaga, Perth WA 6090

Ph: (08) 6118 5300
Sales: 1300 309 303
Email: wa@apsindustrial.com.au

TASMANIA

Launceston- 32 Gleadow Street,
Invermay, TAS, 7248

Devonport - Unit 1, 18 Ferguson Drive,
Quoiba, TAS, 7310

Hobart - 441A Macquarie Street,
South Hobart, TAS, 7004

Ph: (03) 6336 9666
Email: tas@apsindustrial.com.au