

# DD Industrial HRC Fuse Links



## Product description

Eaton's Bussmann® series DD British Standard fuse links, size B2, are specifically designed for the protection of general industrial applications e.g. power distribution, cable protection, motor protection.

## Standard features

- Good peak let-through current limitation
- 1:1:6 Selective coordination ratio between "minor" and "major" fuse
- gG characteristics for cable protection and gM for motor protection applications
- Power loss values well within the limits of IEC 60269-2



*Powering Business Worldwide*

**Catalogue symbol:**

- DD(Amps)

**Technical data:**

- Rated voltage: 415 V a.c.
- Rated current: 125 to 200 A
- Breaking capacity: 80 kA a.c.
- Breaking range and utilisation category: gG / gM

**Standards/approvals:**

- BS88-2
- IEC 60269-2
- Suitable for use in RoHS compliant applications

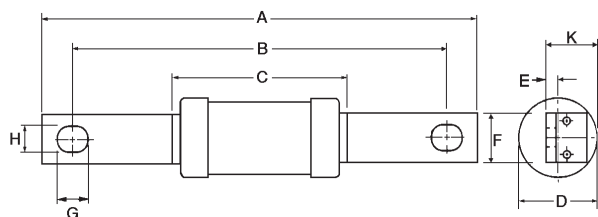
**Packaging:**

- MOQ 5

**Table 1. Technical data**

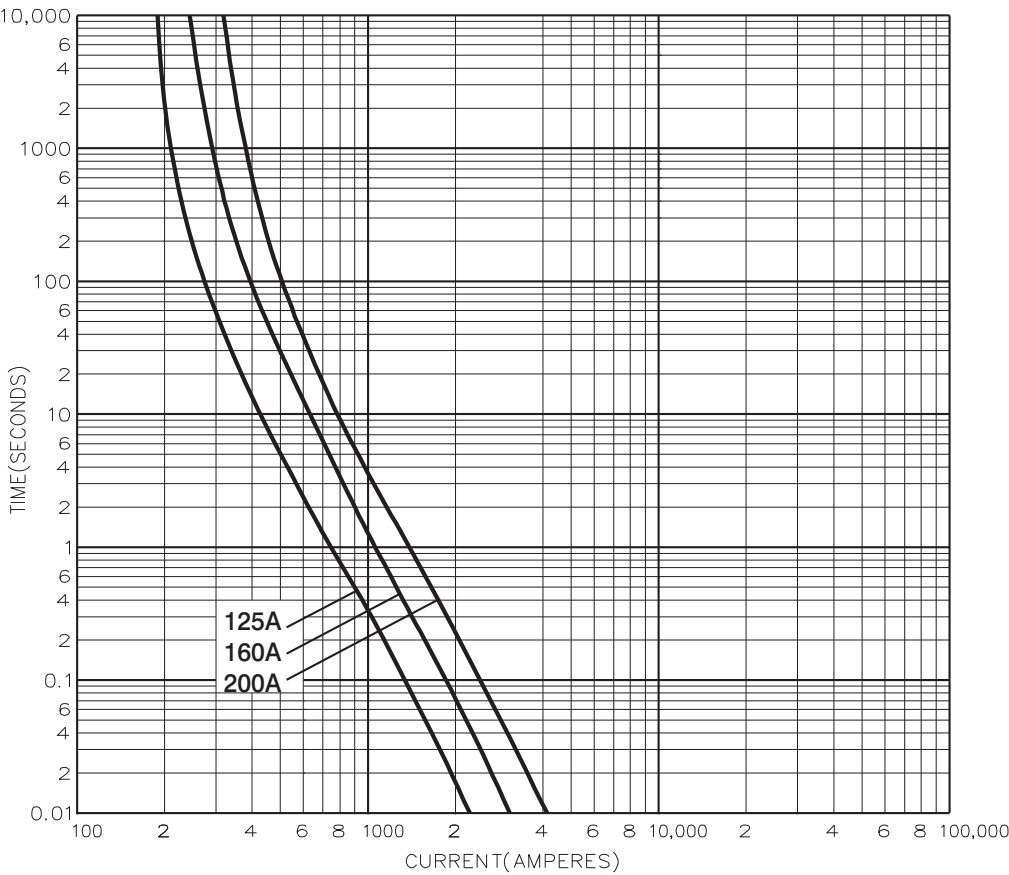
Part number	Voltage	Current rating (amps)	Energy integrals I <sup>2</sup> t (A <sup>2</sup> S)		Watts loss W	Product Class	Weight
			Pre-arcing	Total at 415V			
DD125	415 V a.c.	125	29.5	71	11	gG	145g
DD160	415 V a.c.	160	57	135	13	gG	145g
DD200	415 V a.c.	200	120	290	14	gG	145g
DD200M250	415 V a.c.	200M250	200	480	11	gM	145g
DD200M315	415 V a.c.	200M315	265	635	9	gM	145g

**Dimensions - mm**

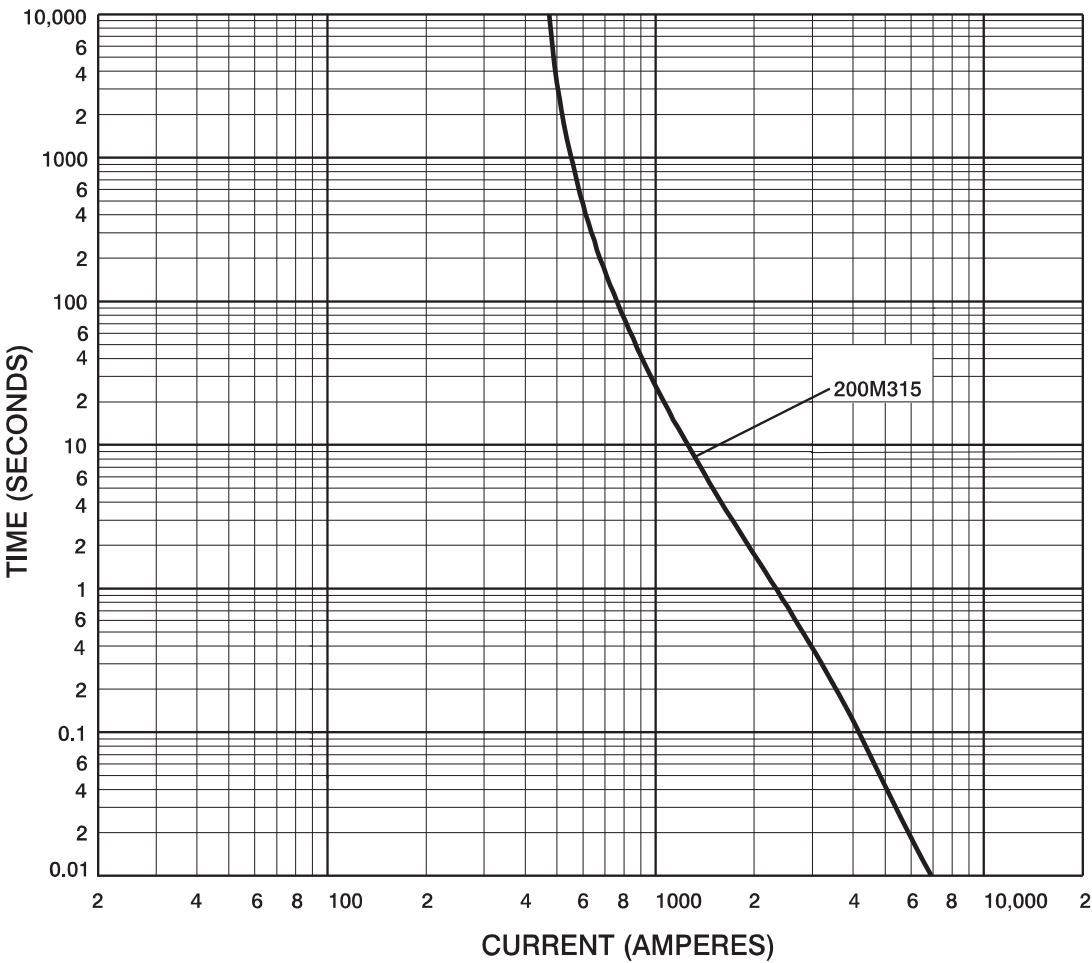


Catalogue numbers	A	B	C	D	E	F	G	H	K
DD125-200 and DD200M250-315	136	111	47	31	3.2	19	12.5	9	22.5

Time current curve - DD125 to DD200



Time current curve - DD200M



Changes to the products, to the information contained in this document, and to prices are reserved; so are errors and omissions. Only order confirmations and technical documentation by Eaton is binding. Photos and pictures also do not warrant a specific layout or functionality. Their use in whatever form is subject to prior approval by Eaton. The same applies to Trademarks (especially Eaton, Moeller, and Cutler-Hammer). The Terms and Conditions of Eaton apply, as referenced on Eaton Internet pages and Eaton order confirmations.

**Eaton**  
EMEA Headquarters  
Route de la Longeraie 7  
1110 Morges, Switzerland

Eaton Electrical Products Limited  
Melton Road  
Burton-on-the-Wolds  
Leicestershire, LE12 5TH  
United Kingdom

© 2017 Eaton  
All Rights Reserved  
PDF Only  
Publication No. 4118  
October 2017