

Bussmann Safeclip fuse holders



Product description

Bussmann's range of Safeclip fuse holders is specifically designed for easy tool-free fuse installation.

Standard features

- Industry standard fuse holders address many application needs
- Fully shrouded for greater safety
- Most comprehensive range available to meet the majority of applications
- High resistance body material helps ensure high dielectric strength
- Extremely reliable contact system for superior electrical conductivity

Catalogue Symbol:

- SC(current)

Technical data:

Volts: up to 550 Vac

Amps: 20 to 125 A

Terminal conductor range: 16 to 70 mm²

Maximum ambient operating temperature: 40°C

Standards/Approvals:

- BS88
- IEC 60269-1

Fuse links (ordered separately)

See table below

Weights:

- SC20H: 85 grams
- SC20P: 113 grams
- SC32BH: 95 grams
- SC32HD: 97 grams
- SC32P: 125 grams
- SC63BH: 165 grams
- SC63HD: 160 grams
- SC100H: 330 grams
- SC125HD: 365 grams

Packaging:

- 20 to 63 A: 10
- 100 A: 5
- 125 A: 1

Table 2. Technical data

Current (Amps)	Voltage (Vac)	Standards	Max conductor size	Compatible fuse links	Packaging
20	550	BS88 and IEC 60269	16mm ²	SS	10
32	550	BS88 and IEC 60269	16mm ²	NS	10
63	550	BS88 and IEC 60269	25mm ²	ES	10
100	550	BS88 and IEC 60269	50mm ²	OS	5
125	550	BS88 and IEC 60269	70mm ²	XS	1

Table 3. Accessories

Type	Part number	To be used with fuse links	To be used with fuse holders
Copper links	SSC-LINK	-	SC20
Copper links	NSC-LINK	-	SC32
Copper links	ESC-LINK	-	SC63
Copper links	OSC-LINK	-	SC100
Copper links	XSC-LINK	-	SC125
Padlockable inserts	SC32LOCK	-	SC32
Padlockable inserts	SC63LOCK	-	SC63
Adaptor carrier	SCA63CAR	NS	SC63
Sealing band	SCSB20-32	-	SC20 and SC32
DIN-Rail adaptor ¹	DIN-20-32	-	SC20 and RS20

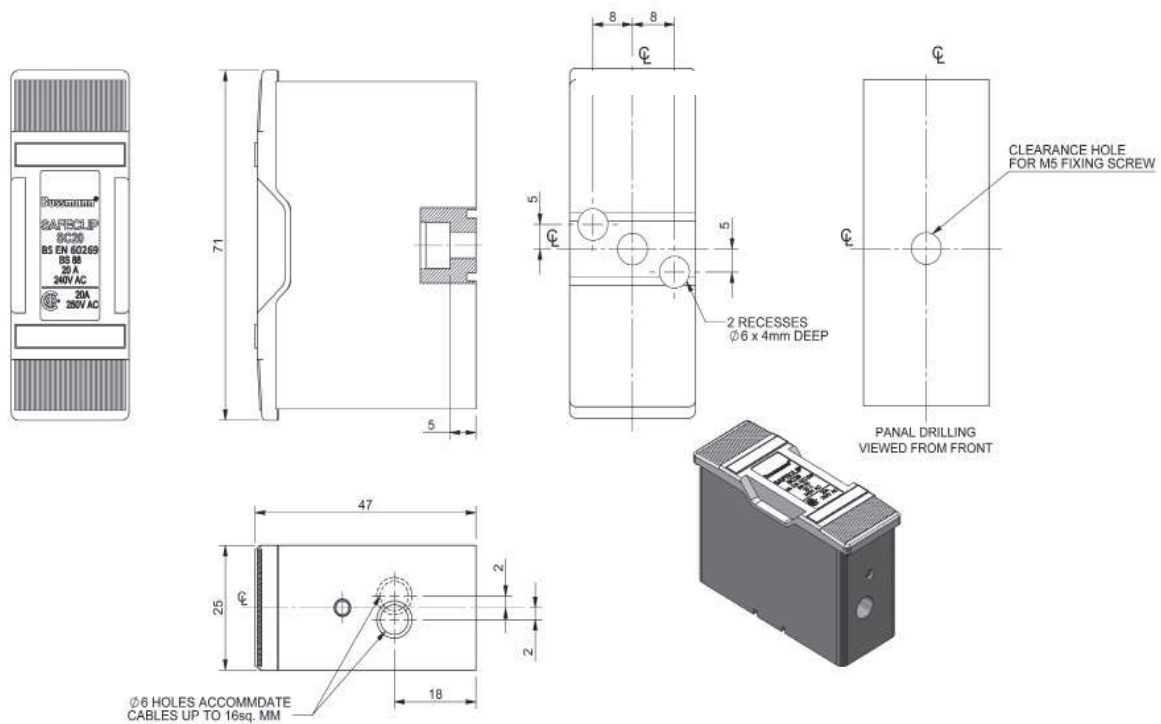
¹ SC32H-D, SC63H-D and SC125H-D have an integral DIN-Rail feature as standard

Table 1. Part numbers

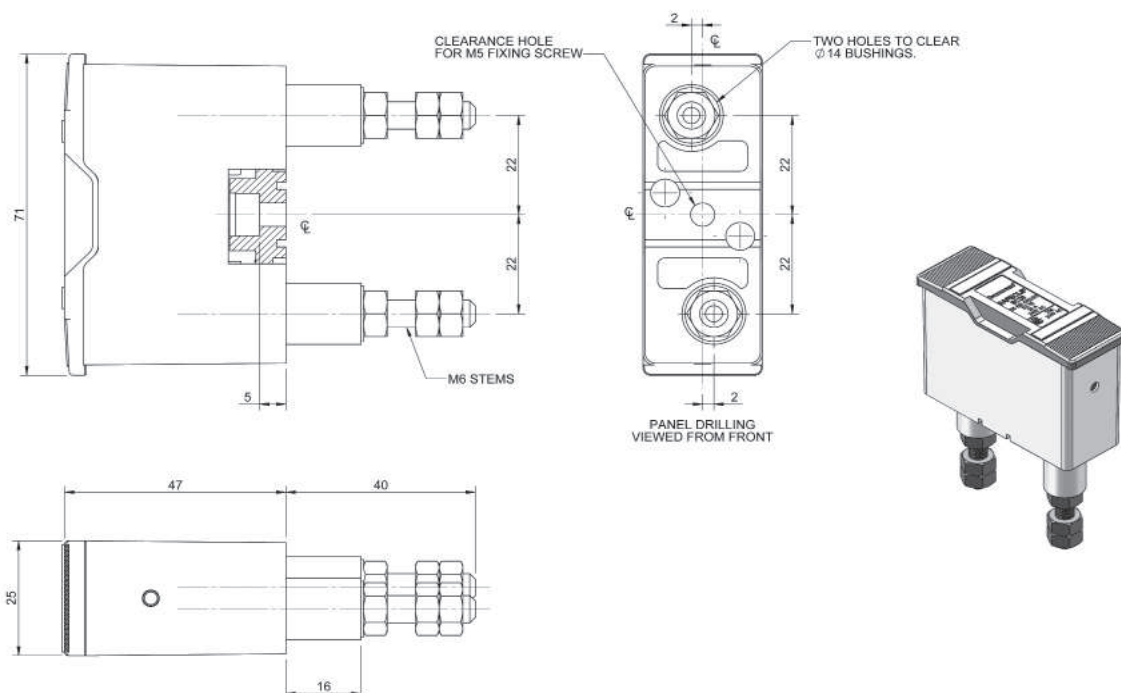
Fuse holder description	Colour	20A	32A	63A	100A	125A
Front connected	Black	SC20H	SC32H-D	SC63H-D	SC100H	SC125H-D
Front connected	White	SC20HWH	SC32H-DWH	SC63H-DWH	-	-
Front connected	Green	SC20HGN	SC32H-DGN	-	-	-
Back stud connected	Black	SC20P	SC32P	SC63P	-	-
Back stud connected	White	SC20PWH	SC32PWH	-	-	-
Back stud connected	Green	SC20PGN	SC32PGN	-	-	-
Busbar/Front connected	Black	SC20BH	SC32BH	SC63BH	-	-
Front/Back stud connected	Black	-	SC32PH-D	-	-	-
Front/Back stud connected	White	-	SC32PH-DWH	-	-	-

Dimensions - mm

20A, Front connected

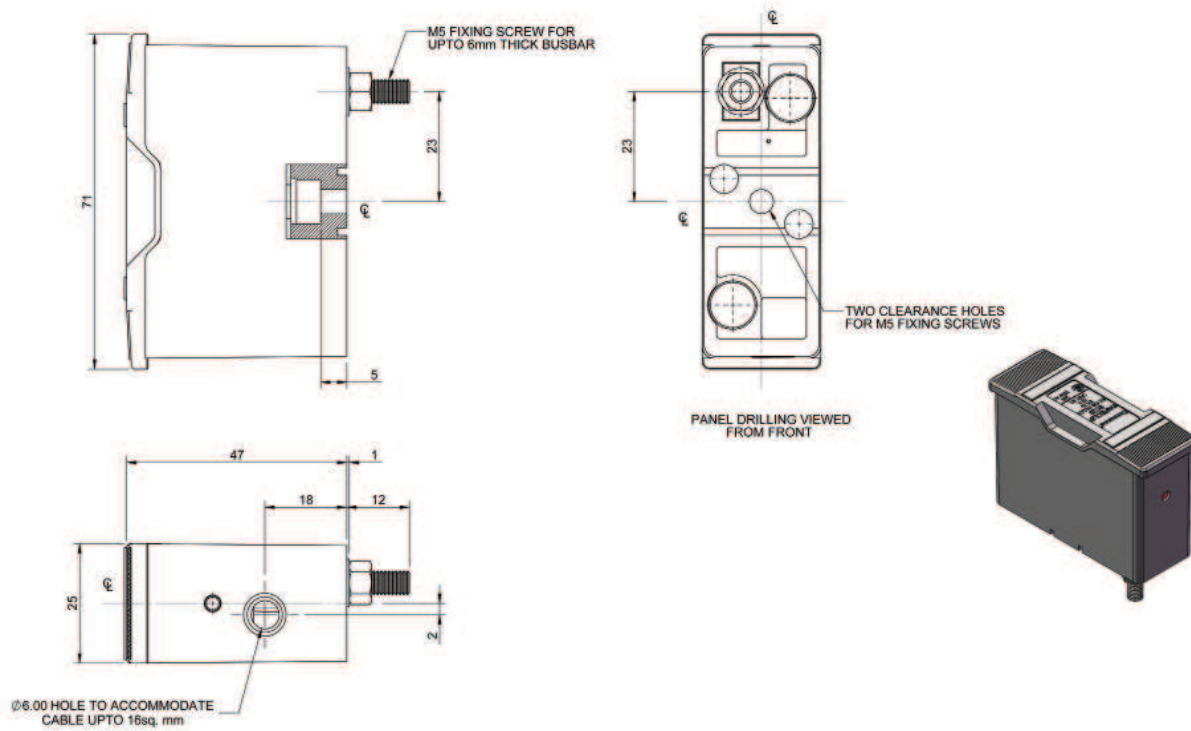


20A, Back stud connected

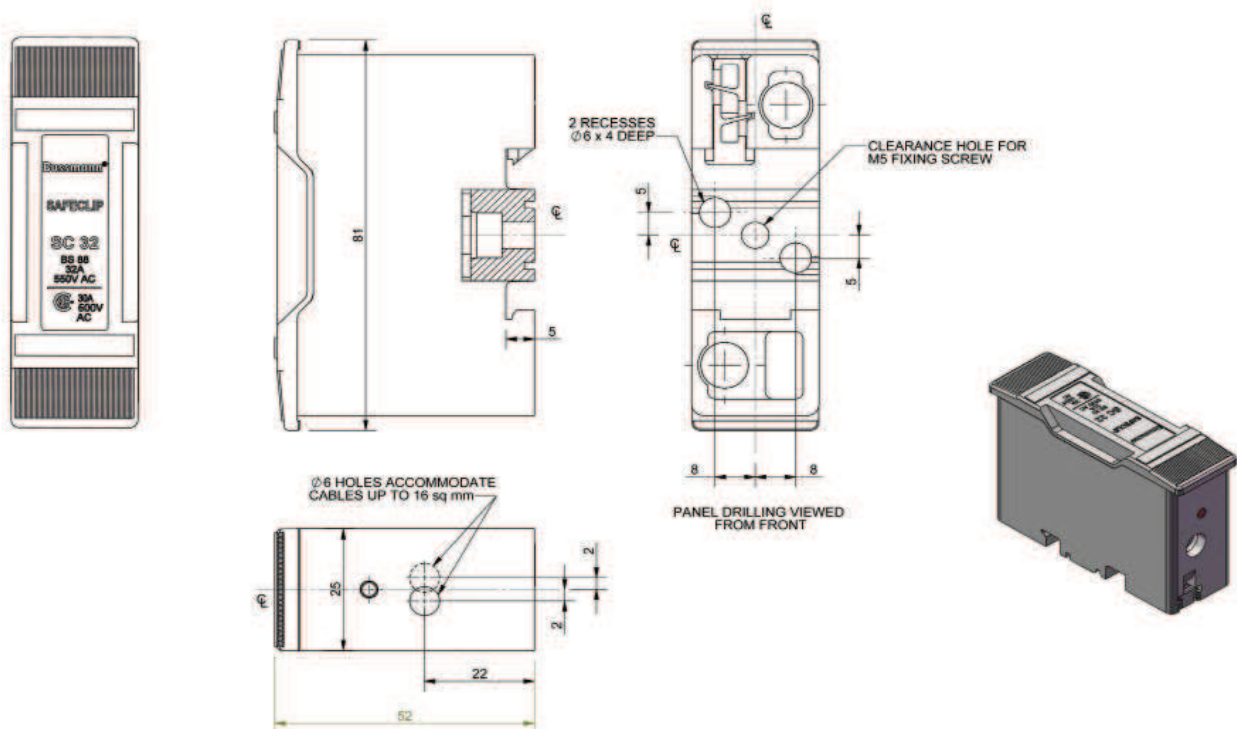


Dimensions - mm

20A, Busbar/Front connected

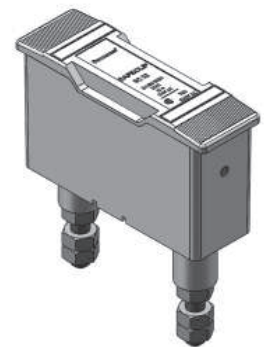
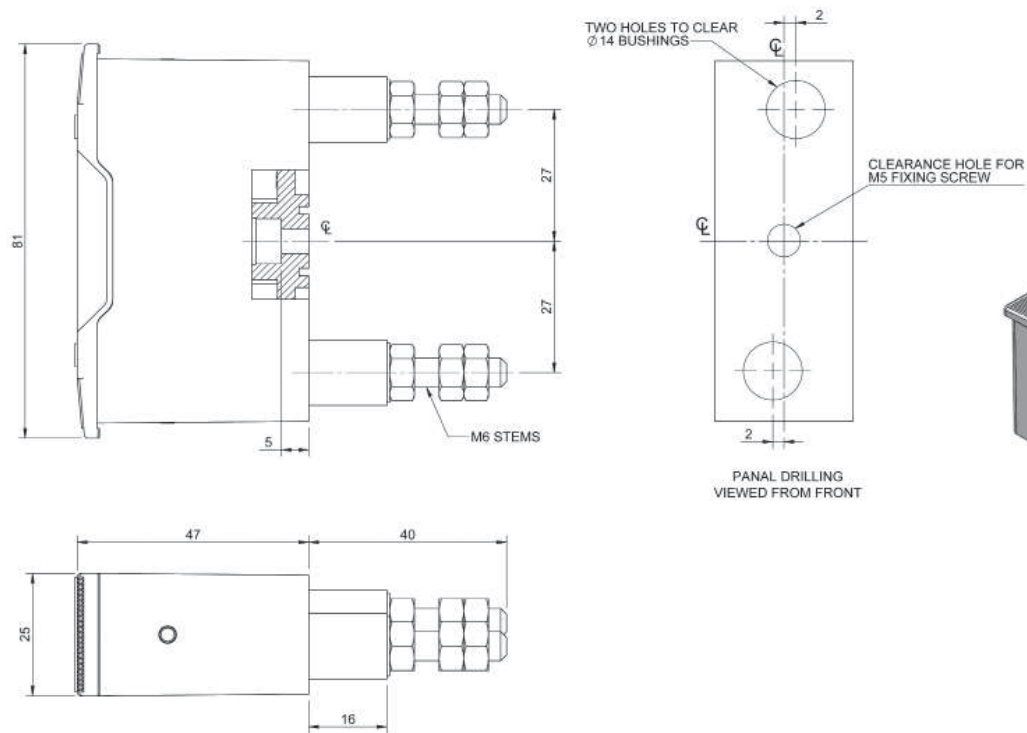


32A, Front connected

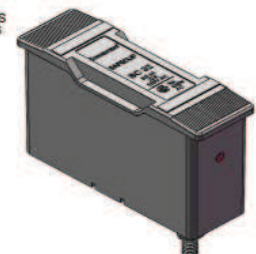
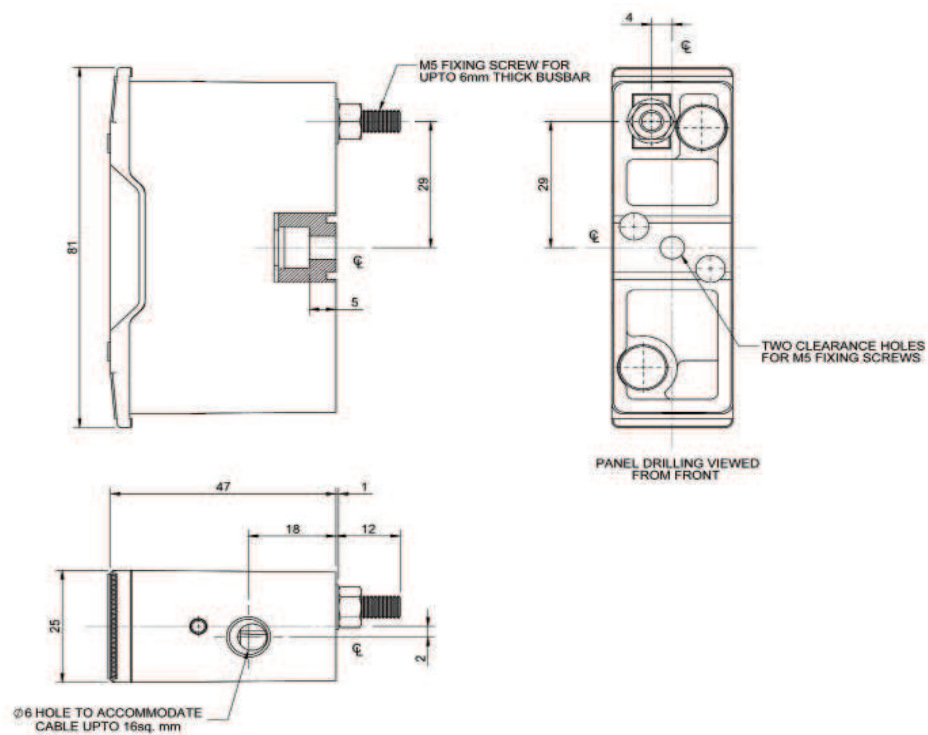


Dimensions - mm

32A, Back stud connected

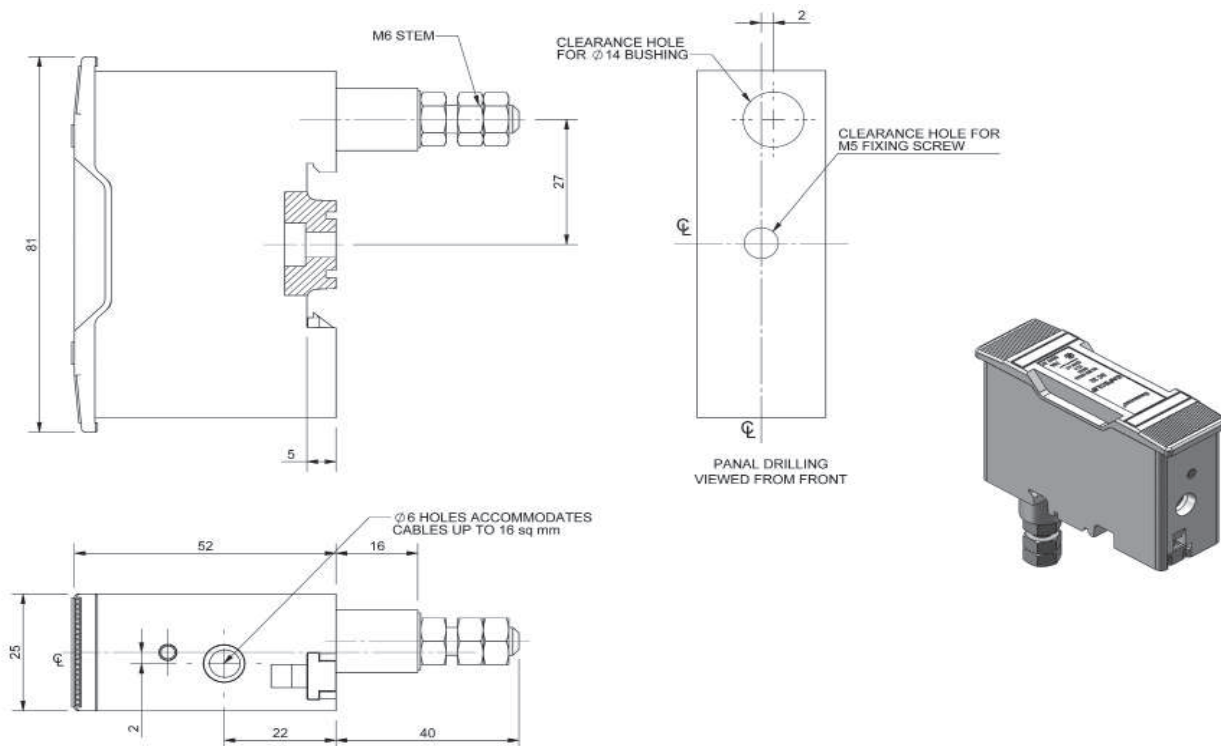


32A, Busbar/Front connected

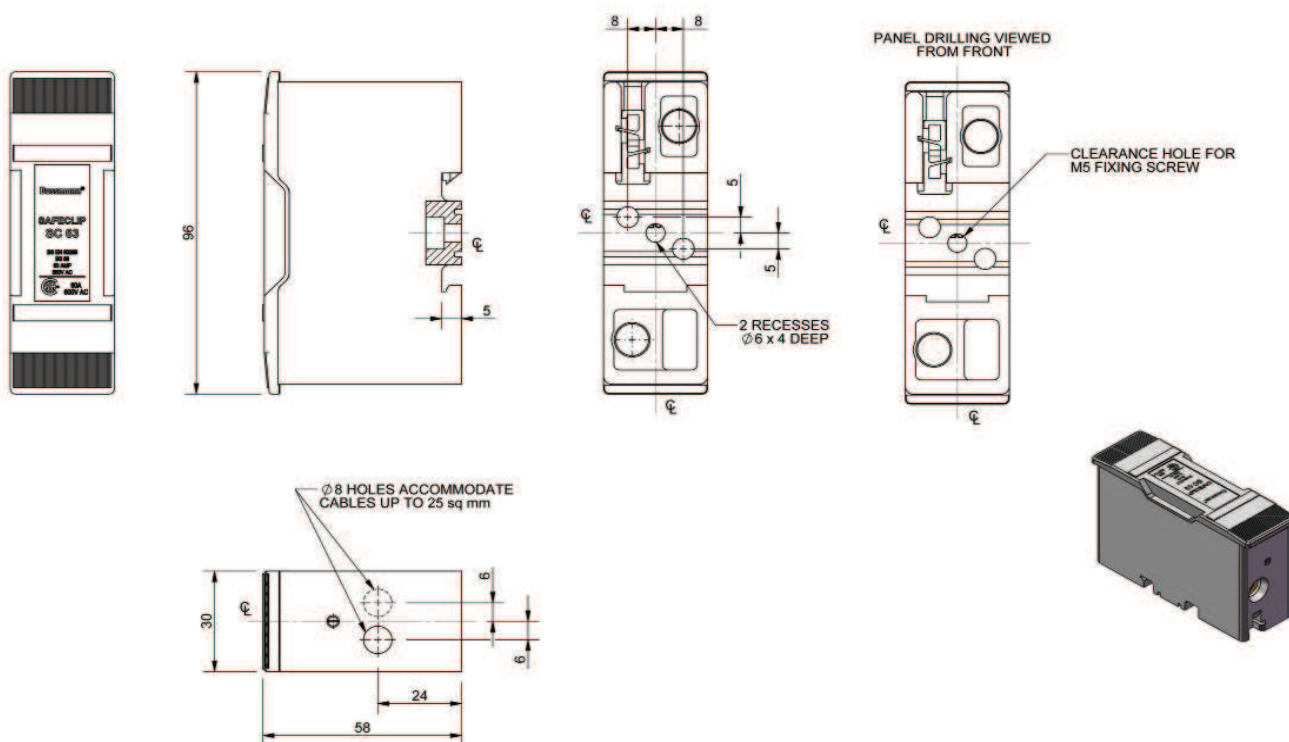


Dimensions - mm

32A, Front/Back stud connected

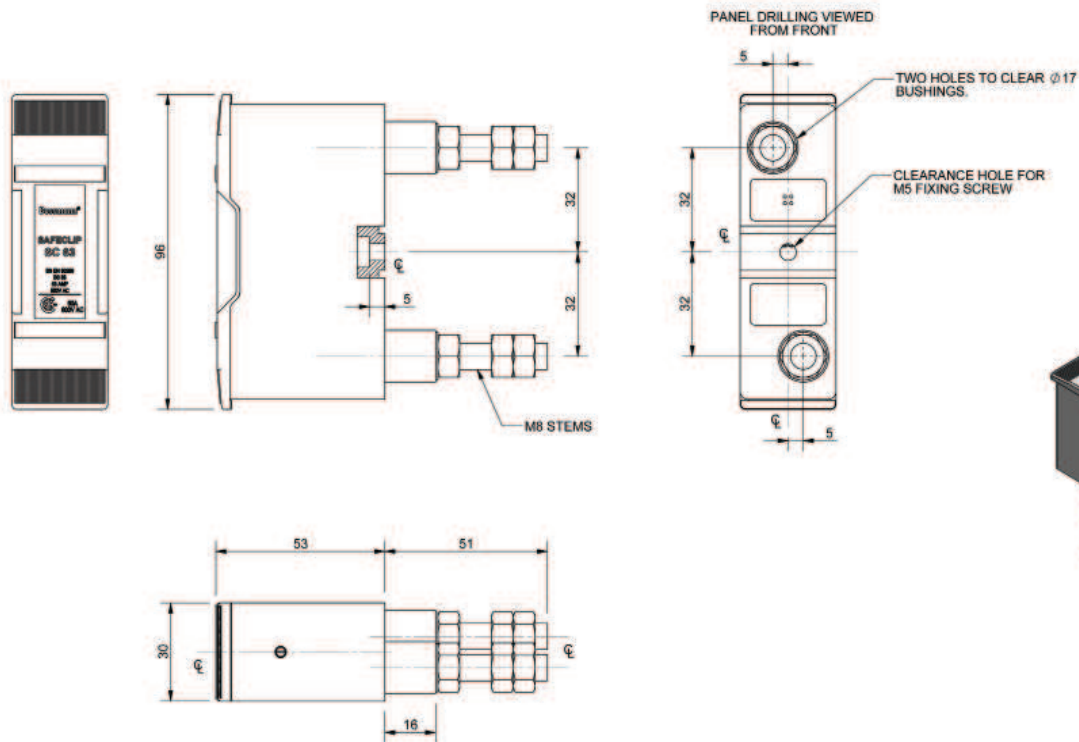


63A, Front connected

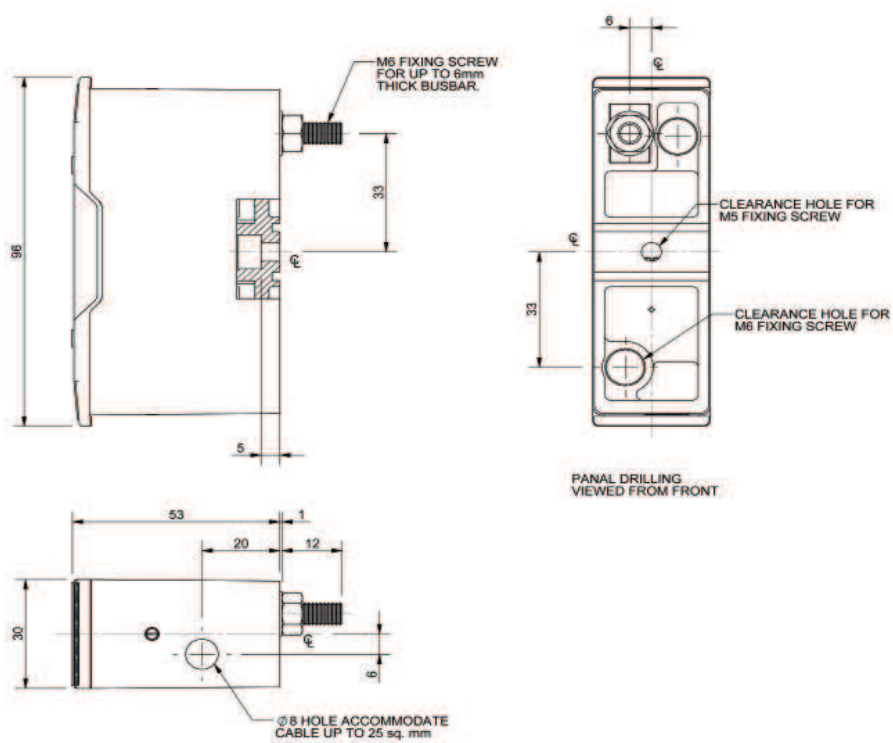


Dimensions - mm

63A, Back stud connected

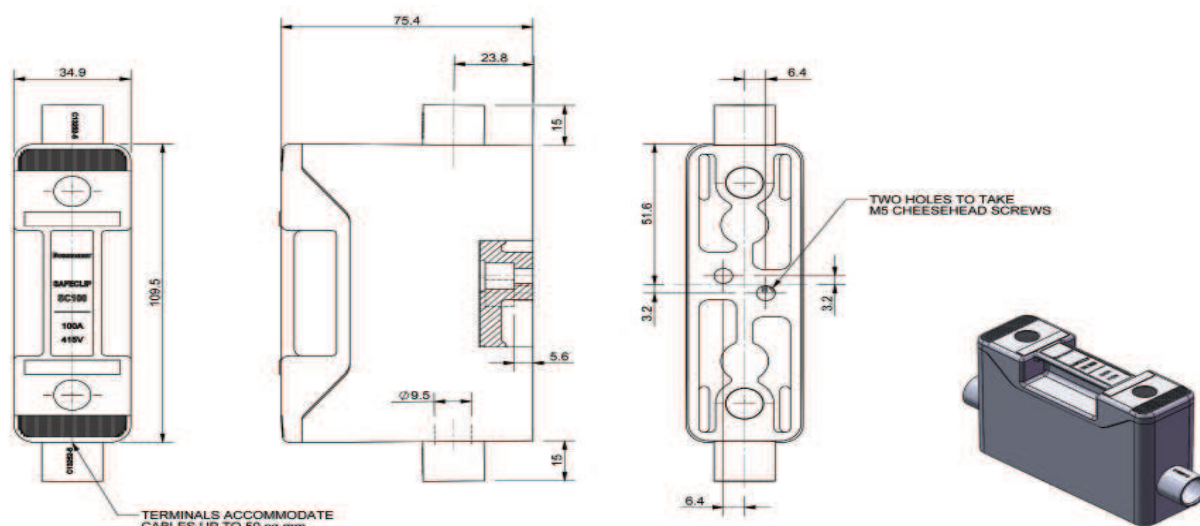


63A, Busbar/Front connectd

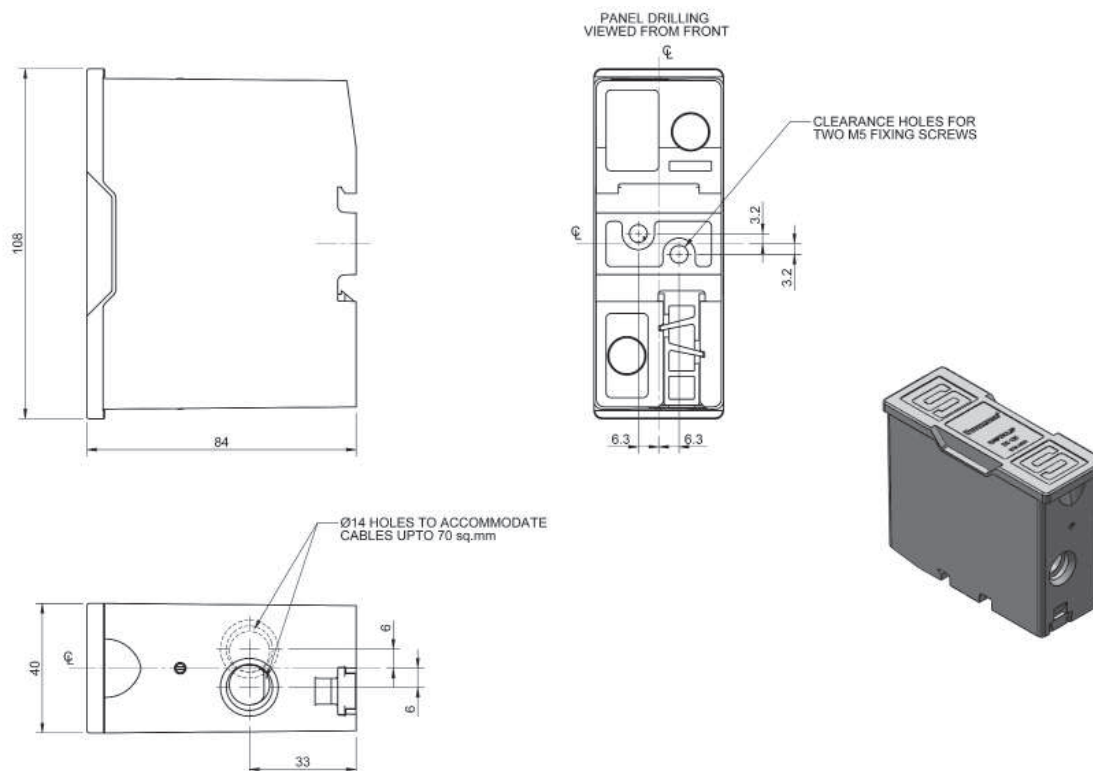


Dimensions - mm

100A, Front connected



125A, Front connected



Changes to the products, to the information contained in this document, and to prices are reserved; so are errors and omissions. Only order confirmations and technical documentation by Eaton is binding. Photos and pictures also do not warrant a specific layout or functionality. Their use in whatever form is subject to prior approval by Eaton. The same applies to trademarks (especially Eaton, Moeller, and Cutler-Hammer). The Terms and Conditions of Eaton apply, as referenced on Eaton Internet pages and Eaton order confirmations.

Eaton Industries Manufacturing GmbH
Electrical Sector EMEA
Route de la Longeraie
71110 Morges, Switzerland
Eaton.eu

© 2014 Eaton
All Rights Reserved
Publication No. 10137
June 2014

Eaton is a registered trademark.

All other trademarks are property of their respective owners.