

STAINLESS STEEL PLIABLE CONDUIT

Features & Benefits

- 304 Grade Stainless Steel Pliable Conduit Type SSP made with close pitch annular corrugations from Butt-Welded Stainless Steel Tube
- HD 1250N with Very High Impact and Compression Resistance COCKATOO PROOF
- Suitable for installations where Mechanical Damage, Corrosion, High Temperature, Flammability or Halogen may cause problems
- Working Temperature - requires full claim from manufacturer. -60 to +200°C using silicone 'O' rings



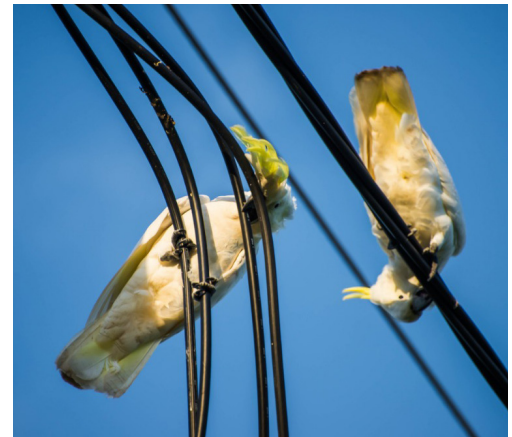
Safety & Compliance

- IEC 61386-22 2002
- IEC 61386-1 2008



Technical Data

PART NUMBER	TRADE SIZE	I.D	BRASS FITTING
SSP12	12mm	6.45mm	CBM12
SSP16	16mm	12mm	CBM16
SSP20	20mm	16mm	CBM20
SSP25	25mm	21mm	CBM25
SSP32	32mm	27mm	CBM32
SSP40	40mm	35mm	CBM40
SSP50	50mm	40mm	CBM50
SSP63	63mm	51mm	CBM63



Ordering Information

PART NUMBER	DESCRIPTION
SSP12	PLIABLE SS CONDUIT 12MM X 20M BIRD PROOF
SSP16	PLIABLE SS CONDUIT 16MM X 20M BIRD PROOF
SSP20	PLIABLE SS CONDUIT 20MM X 20M BIRD PROOF
SSP25	PLIABLE SS CONDUIT 25MM X 20M BIRD PROOF
SSP32	PLIABLE SS CONDUIT 32MM X 10M BIRD PROOF
SSP40	PLIABLE SS CONDUIT 40MM X 10M BIRD PROOF
SSP50	PLIABLE SS CONDUIT 50MM X 10M BIRD PROOF
SSP63	PLIABLE SS CONDUIT 63MM X 10M BIRD PROOF



In support of our policy of continuous product improvement we reserve the right to change materials and specifications without notice. Drawings, where used, are not to scale. All dimensions are in millimetres and sizes given are approximate. Where possible, technical MSDS data sheets are made available on the website. All products should be installed and used in accordance with manufacturer's instructions provided. Warning: products may be the subject of registered designs and patents. Refer to website for terms and conditions on warranty.