

Cat6A UTP 28AWG Super-Thin 10G Patch Lead

NPLSC6A

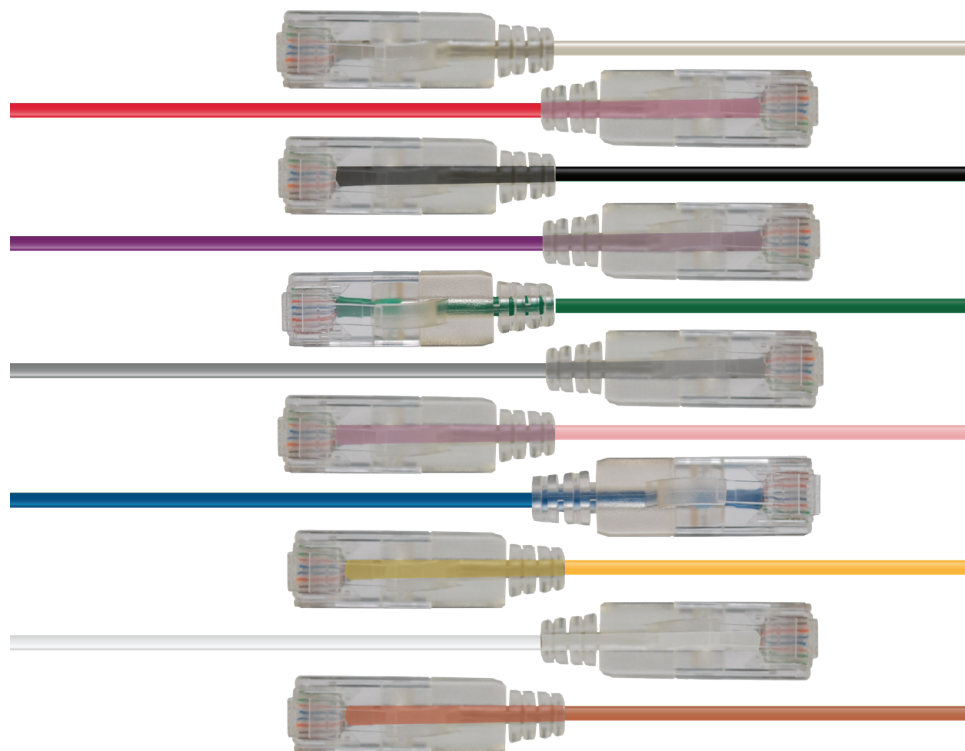
DESCRIPTION

The Slimline Cat6A UTP patch leads conform to the TIA/EIA-568-B specification. Patch leads are wired to the T568A pinout specification. They are component level tested and are made with tangle free slimline injection molded boots and latch down plugs in various colours and lengths.

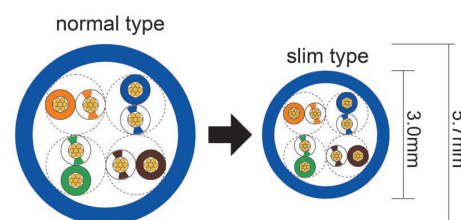
FEATURES:

Produced by an ISO9001 and ISO14001 certified manufacturer

- 100% tested and component level certified by 3P, UL and ETL
- High flexible bend radius
- Channel Level Compliant
- Available in 11 colours
- Covered by lifetime warranty
- Perfect for cabling network data cabinets
- Perfect for cabling home structured wiring boxes
- Perfect for cabling high density patch environment
- Not compatible with HDBaseT connectivity



T568A Cabling Pinout Specifications



LENGTH	5M	10M	15M	20M
BEIGE	NPLSC6ABG5	NPLSC6ABG10		
BLACK	NPLSC6ABK5	NPLSC6ABK10		
BLUE	NPLSC6ABL5	NPLSC6ABL10	NPLSC6ABL15	NPLSC6ABL20
GREEN	NPLSC6AGN5	NPLSC6AGN10		
GREY	NPLSC6AGY5	NPLSC6AGY10		
RED	NPLSC6ARD5	NPLSC6ARD10		
ORANGE	NPLSC6AOR5	NPLSC6AOR10		
PINK	NPLSC6APK5	NPLSC6APK10		
PURPLE	NPLSC6APP5	NPLSC6APP10		
WHITE	NPLSC6AWH5	NPLSC6AWH10		
YELLOW	NPLSC6AYL5	NPLSC6AYL10		