

PUMA

8W Grill Bulkhead

The PUMA Bulkhead Grill is designed for Vandal Resistant Requirements. With inbuilt LED, it is a low maintenance fitting suited for public areas. Can also be used in residential homes. Ideal for both interior and exterior in residential and commercial applications.

SPECIFICATIONS

Material Specifications

Material

Die Cast Aluminum Body, PMMC Opal Lens

Dimensions

217mm x 133mm x 70mm

Ingress Protection

IP54

Impact Rating

IK08

Warranty

5 Year Replacement

Electrical Specifications

Power Supply

KEGU, Non-Dimmable Integrated Driver

Connection Method

Hard Wiring Required

Input Voltage

240V

Optic Specifications

Light Source

8W Epistar 42 pcs SMD2835

Delivered Lumens

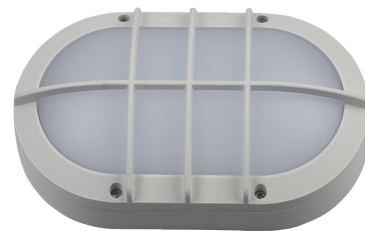
650lm

CRI

82Ra

Rated Lifetime (L70)

30,000 Hrs



VARIATIONS

LC6570 PUMA 8W Grill Bulkhead, Black Trim, 3000K

LC6573 PUMA 8W Grill Bulkhead, Black Trim, 4000K

LC6572 PUMA 8W Grill Bulkhead, White Trim, 3000K

LC6571 PUMA 8W Grill Bulkhead, White Trim, 4000K