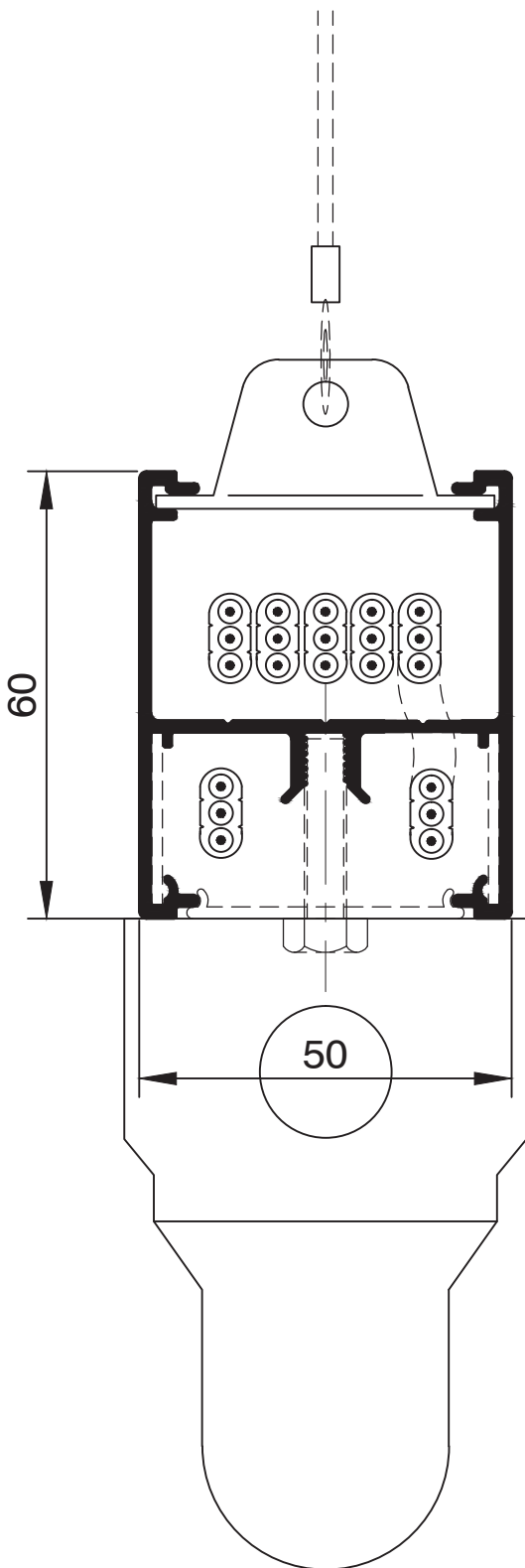


# Lighting Trunking

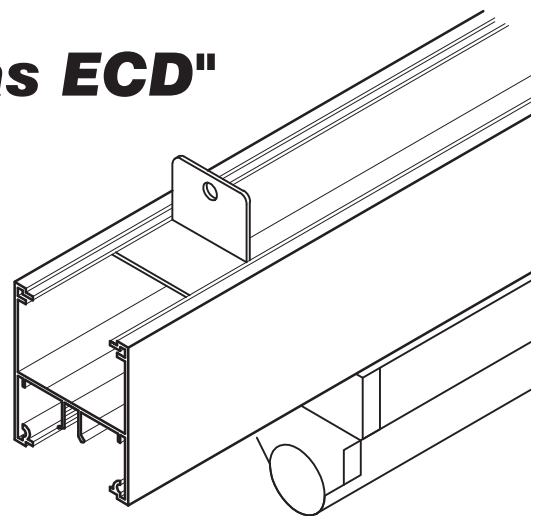
## At a glance ...

- Size: 60x50mm
- Light Fitting: Surface Mounted
- Cover: "Snap-fit" Aluminium



- The LT 6050 Overhead Service Duct has been designed to carry lighting cables and fittings overhead where ceiling access is not available
- The unique 2 compartment design allows for easy management of lighting circuits and / or segregation of lighting control data cabling
- The LT 6050 duct body and lid is manufactured from extruded aluminium.
- Optional snap in extruded aluminium covers can be fitted top or bottom
- This product can be surface mounted, rod suspended or wire suspended.
- The LT 6050 is supplied in a natural anodised finish as standard or if required can be powdercoat finished.
- This product has been examined in accordance with AS 3000 and conforms to A.C.M.A requirements.

**"Easy as ECD"**



# ECD

ESTABLISHED 1979

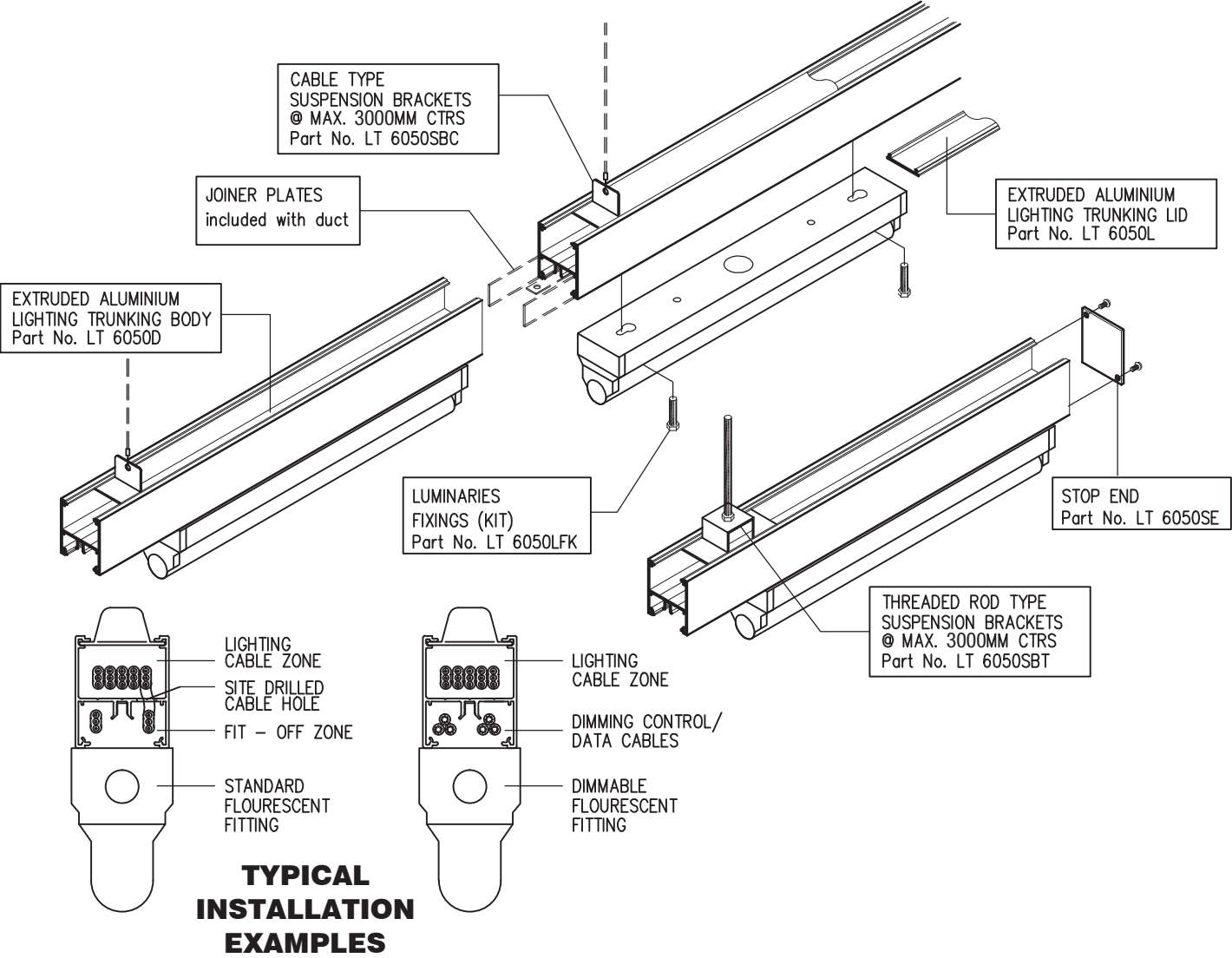
## Electric Cable Duct Systems P/L

Ph. 1300 123 ECD (323)  
Email. [info@ecd.net.au](mailto:info@ecd.net.au)

Fax. (03) 9899 5042  
[www.ecd.net.au](http://www.ecd.net.au)

ABN 80005544105

**ECD LIGHTING TRUNKING Cat. No: LT 6050**



**Suggested Specification:**

- The contractor shall allow to supply and install "Electric Cable Duct Systems P/L " LT 6050 (60x50mm) Lighting Trunking suspended from or surface mounted to the ceiling or as otherwise nominated and described below.
- When installed suspended from the ceiling structure the contractor shall use the supplied suspension brackets suitable for wire or threaded rod. The brackets shall be spaced at maximum 2400mm centres for normal use.
- The body and lid of the Lighting Trunking shall be extruded aluminium in a natural (clear) anodised finish or pre-treated and powder coated to a standard colour (White, APO Grey, Stone Beige or Black) or as nominated by the architect.
- The system shall be earthed in accordance with AS 3000 wiring rules and conform to A.C.M.A requirements.
- Bends shall be site mitred to fine tolerances with concealed reinforcing angles riveted in position. Adjacent lengths of duct body shall be splice joined with slide in joiner plates. Screw fixed stop ends shall be fitted where necessary.
- Installation shall be performed by experienced duct installers.

**Parts List**

Description	Part No.	Colour
Lighting Trunking Body - 6m lengths	LT 6050D	Nominate Colour
Lighting Trunking Lid - 3 m lengths	LT 6050L	Nominate Colour
Suspension Bracket - Suits Cable Suspension (Max 3000mm ctrs)	LT 6050 SBC	
Suspension Bracket - Suits Threaded Rod (Max 3000mm ctrs)	LT 6050 SBT	
Luminaries fixing kit - Suits Fluorescent fittings only	LT 6050 LFK	
Stop End	LT 6050 SE	Nominate Colour