

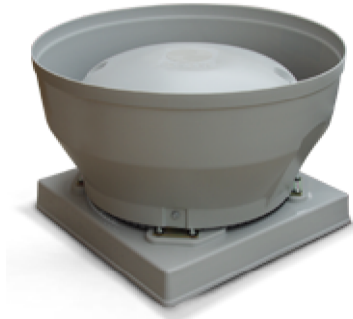
Gamma Vertical Series – CE224V

Location

Project

Designation

Notes



Features

The Gamma Series of centrifugal roof units is generally used in ducted systems for a wide range of exhaust applications.

Construction

Cowls are of UV-stabilised plastic.
Steel components have a corrosion-resistant finish.
Bird-mesh guards are fitted as standard on size 284 and above.
Backward-curved centrifugal impellers.

Motors

Type - external rotor, squirrel cage induction motor.
Electricity supply - 220-240V single or 415V three-phase, 50Hz.
Bearings - sealed-for-life, ball.
Speed-controllable using electronic or auto-transformer controllers except CE316.

Internal Thermal Protection

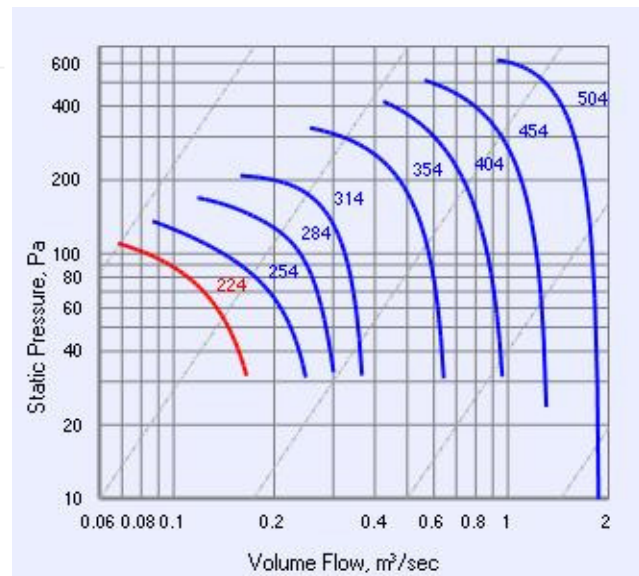
Thermal protection is supplied as standard on all units.
Auto-reset is fitted to units up to '28.' and manual-reset for size '31.' onwards.

Testing

Air flow tests to BS848:Part 1, 1980.
Noise tests to BS848:Part 2, 1985.

Special Features

Can be mounted at angles up to 30°.
Twin fan units to give 100% stand-by capacity can be provided for vertical discharge arrangement in a limited range of sizes.
Refer to our sales department for details.
Backdraft dampers are an optional extra with single fan units and standard supply with twin fan units. The pressure loss must be added to the system pressure when making selections.



Technical Data - CE224V

Speed [rps]	Avg. dBA @ 3m	kWatts (Input)	Amps	Max.° C	Approx. Weight [kg]
23	39	0.049	0.25	70	4

Sound Data

Type	63	125	250	500	1K	2K	4K	8K
Inlet	68	66	61	58	50	50	48	42

Gamma Vertical Series – CE224V

Suggested Specification

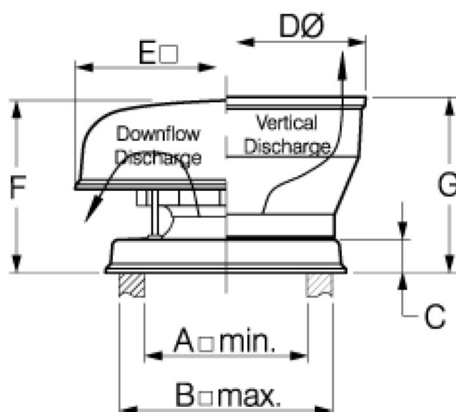
The Gamma Series of centrifugal roof ventilators shall be of the vertical discharge type as designed and manufactured by Fantech Pty. Ltd.

Impellers shall be backward-curved centrifugal design and driven by speed-controllable external rotor motors with integral thermal protection.

The cowl shall be of the vertical discharge design and formed from plastic and/or fibreglass. Steel components shall be corrosion protected.

All models shall be fully tested to BS848:Part 1, 1980 for air flow and BS848:Part 2, 1985 for noise, in fully certified laboratories.

Dimensions



A	B	C	D	E	F	G
260	310	50	430	370	200	244

All dimensions in mm, unless otherwise stated

Contacts



OFFICES & AGENTS

Victoria

Fantech Pty. Ltd.
Tel: +61 (03) 9554-7845

New South Wales

Fantech Pty. Ltd.
Tel: +61 (02) 8811-0400

Uniair Distributors Pty. Ltd.

Tel: +61 (02) 4961-6088
Refrigeration and Air Supplies
Tel: +61 (02) 4226-5133
Fantech Pty. Ltd.
Tel: +61 (02) 6025-1866

South Australia

Fantech Pty. Ltd.
Tel: +61 (08) 8294-0530

Queensland

Air Design Pty. Ltd.
Tel: +61 (07) 3299-9888
Capricorn Air Conditioning
Tel: +61 (07) 4775-5222

Northern Territory

Fantech Pty. Ltd.
Tel: +61 (08) 8947-0447

Western Australia

Systemaire Pty. Ltd.
Tel: +61 (08) 9209-4999

Tasmania

Major Air Pty. Ltd.
Tel: +61 (03) 6344-6888
Hobart
Tel: +61 (03) 62736455

ACT

Idealair Group Pty. Ltd.
Tel: +61 (02) 6280-5511

Auckland

Fantech (NZ) Ltd.
Tel: +64 (09) 444-6266

Christchurch

Fantech (NZ) Ltd.
Tel: +64 (03) 379-8622

Wellington

Fantech (NZ) Ltd.
Tel: +64 (04) 566-0532