



# Smart Battery Powered Remote Switch Mechanism

KASTA-RB02-W  
SAP CODE: 5000006

## Bluetooth Remote Switch

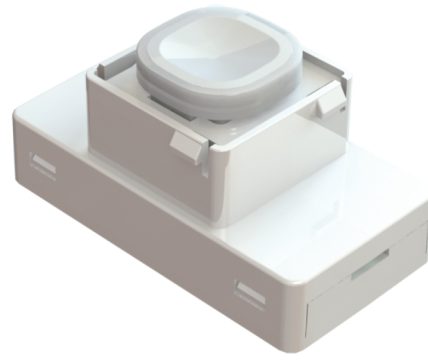
Smart Wireless Remote Switch that clips into a standard wall plate. It can be manually operated, controlled via the free KASTA APP or programmed for group or scene control.

### Applications

Residential, Apartments, New Construction, Retrofit & Renovation

### Accessories

Black button caps to suit black wall plates (KASTA-CAPS-B)



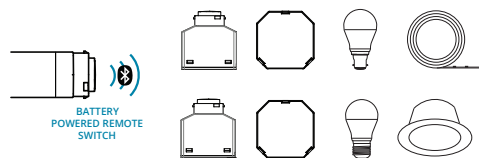
## FEATURES

- Short Press for On/Off Control
- Long Press for Dimming Control
- Lithium Battery Powered
- Robust Wireless Bluetooth Mesh
- iOS & Android APP setup and Control
- 8 Way Multi-way control with Dimmer/Switch devices
- Remote Switch Control for all KASTA devices
- Group and Scene Functions
- Replaceable buttons
- Suits most Australian Wall plates
- Supplied with 2 White Button Caps (2 Styles)

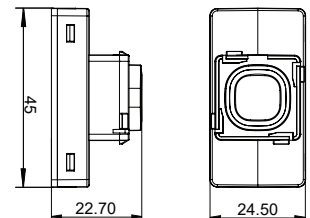
## ELECTRICAL

Power Supply	2x CR2032 (battery)
Battery Life	3 Years (50K presses)
Operating Ambient Temp	-20 to 40°C

## CONNECTION DIAGRAM



## DIMENSIONS



Get the KASTA App

