

Copper Up & Down Wall Pillar Lights

PRODUCT SPECIFICATIONS

Name: Tivah

Material: Copper

Colour: Copper (will age over time)

IP Rating: IP65

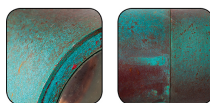
Lamp Base: GU10 or MR16

CRI: ≥80

Wiring: Parallel

Dimmable: No

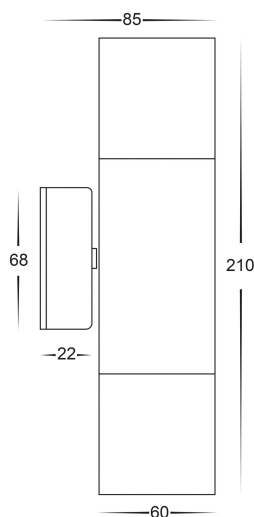
Warranty: 2 Years Replacement**



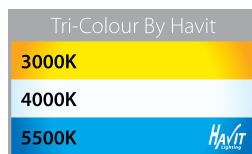
Weathered Copper



DIMENSIONS



COLOUR TEMPERATURE



IP RATING



APPROVALS



Product Ordering

IMAGE	PART NUMBER	COLOUR TEMP	LUMENS	INPUT	BEAM ANGLE	INCLUDED LED
	HV1015T	3000K 4000K 5500K	2x 240-560lm 2x 255-595lm 2x 270-630lm	240v	60°	9 in 1 Tri-Colour 2x 3/5/7w GU10 LED
	HV1017GU10T	3000K 4000K 5500K	2x 270lm 2x 285lm 2x 300lm	240v	120°	Tri-Colour 2x 5w GU10 LED
	HV1017MR16T	3000K 4000K 5500K	2x 270lm 2x 285lm 2x 300lm	12v DC	120°	Tri-Colour 2x 5w MR16 LED

12v DC models must be used with suitable 12v DC LED Driver

* Lumen output measured at source

** See Warranty Terms and Conditions for more information

For more information contact Havit Lighting

ADDRESS:
143 Beauchamp Road
Matraville NSW 2036
Australia

Tel: 02 9381 8300
Fax: 02 9666 8881
Email: sales@havit.com.au
web: www.havit.com.au