

[Home](#) / Ethernet Cable Category 6A U-UTP Grey LSZH

Ethernet Cable Category 6A U-UTP Grey LSZH

Your Price (Incl. GST) **RRP \$581.90**

In Stock

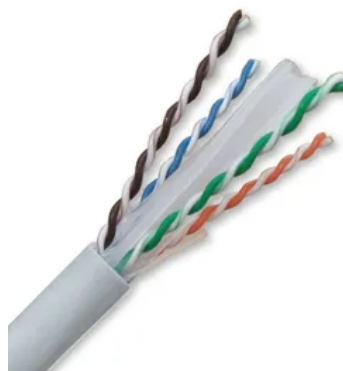
Item Number: MSSCABLE6AU

Packaging Unit: 1 / each



- Excellent performance in C6A networks
- Fully standards compliant
- Improved central separator

Need More Options? [Contact Sales](#) Or
Request A Quote From Your Cart



Product Information

Product Details

Product Description

CAT6A 305 Metre Ethernet Cable with Solid Conductors

The ideal cat6A cable for running from a patch panel to the wall outlet jack, this solid conductor cable is designed to support Cat6A Link and Channel performance standards set out in AS/NZS 11801.1 and ANSI/TIA 568.2-D

Featuring 23 AWG bare copper conductors and a central spline separator, this cable supports 10 Gigabit Ethernet.

Also known as LAN cable, Ethernet Cable, Permanent Link Cable and Network Cable

Frequently Asked Questions

Is this cable shielded or unshielded?

This cable is unshielded, also known as UTP which stands for Unshielded Twisted Pairs.

Can I use this cat6A cable with cat6 jacks or patch panels?

Yes. You can use Cat6A cable with Cat6 jacks or patch panels, however the performance of the cable will be limited by the lower performance of the cat6 components.

Can I make patch leads or patch cords with this Cat6A cable?

Yes, however a cable with stranded conductors, also known as patch cord cable is the best option as it is more flexible and designed to be moved. Solid conductor cables such as this one, are designed for permanent installations where they are not moved.

Technical Specifications

Copper Cable Type/Construction:	Indoor
TIA 568 Category:	Cat6A
Conductor Type:	Solid
Shielded:	No
Jacket Colour:	Grey

Document & Downloads

Technical Data

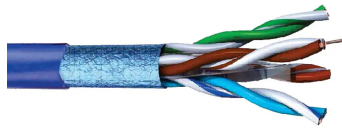
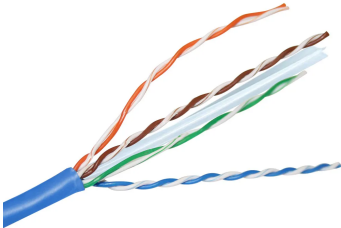
[Datasheet](#)

186.87 KB

[Download](#)

Reviews

Customers Also Viewed



MSSDATA

[Ethernet Cable Category 6 U-UTP Blue 305M](#)

Item Number: MSSCABLE6U

Packaging Unit: 1/ Box

[VIEW PRODUCT](#)

MSSDATA

[Ethernet Cable Category 6A F-UTP Blue 305M LSZH](#)

Item Number: MSSCABLE6AF

Packaging Unit: 1/ Roll

[VIEW PRODUCT](#)

MSSDATA

[MSS Copper 24 Port Loaded Cat6A Unshielded Patch Panel](#)

Item Number: MSSPP24C6A

Packaging Unit: 1/ each

[VIEW PRODUCT](#)

MSSDATA

[MSS Copper 24 Port Loaded Cat6A Shielded Patch Panel](#)

Item Number: MSSPP24C6AS

Packaging Unit: 1/ each

[VIEW PRODUCT](#)



Customer Service

[Contact Us](#)

[Terms & Conditions](#)

[Privacy Policy](#)

[Warranty & Returns](#)

Our Offering

[Products](#)

[Brands](#)

[Catalogues](#)

[Brochures](#)

Our Other Sites

[CABAC](#)

[Legend Power](#)

[Ecco Pacific](#)

[Bardic](#)

[M + H Power](#)

[System Control Engineering](#)

[Hendon Semiconductors](#)



MSS Data Solutions, A Legend Company.



©2023 All rights reserved, Legend.

Website by [acidgreen](#)