

CX Manual Call Point

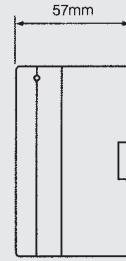
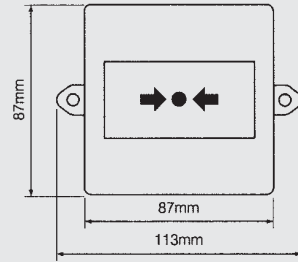


- Weather proof IP66
- Available with 240V rated C/O contact or low voltage versions with monitoring resistor
- PVC coated glass element
- Supplied with test key
- Optional transparent flap



Specifications:

Switch action: Single pole N/O or single C/O contact
 Contact rating: 0.5A at 50VAC/DC (low voltage version) 3A at 250VAC and 24VDC (Mains version)
 Monitoring resistor: 470Ω 1 W (others on request)
 Protection: IP66
 Temp range (°C): -25 to +70
 Construction: ABS
 Weight: 220g



Order Code	Description
FUL52000R	N/O contact with monitoring resistor and LED for voltages up to 50V max
FUL52002R	C/O contact for voltages up to 250VAC
FUL59000CX	Replacement glass (pkt of 10)
FUL59002	Clear polycarbonate flap

Key Box

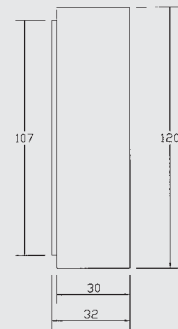
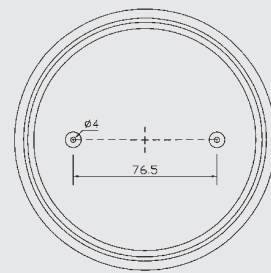


- "Break Glass" box for keys
- Tamper proof housing
- Replaceable glass



Specifications:

Construction: ABS housing (colour red)
 Coated glass



Order Code	Description
LAB10050	Break glass for key box
LAB20045	Replacement glass

Dimensions in mm