

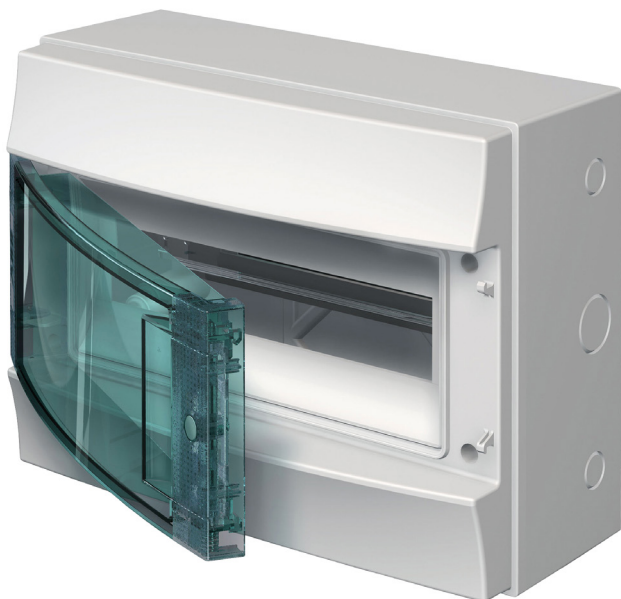
NWP12

NHP Loadcentre Weatherproof 12 Way DIN-T Surface Mounted



ELECTRICAL ENGINEERING PRODUCTS

Component type	Small distribution board
Range	NWP
Model	N/A
Product status	New Item



ELECTRICAL

Rated current In	63 A
Number of outgoing ways	12
Number of poles, 18mm pitch	12
Max. rated operation voltage Ue AC	415 V
Rated insulation voltage Ui	500 V
Neutral terminal block	Yes
Neutral bar rated current	63 A
Earthing terminal block	Yes

CONSTRUCTION

Spare DIN equipment space (poles)	12
DIN-rail	Yes
Number of rows	1
Material housing	Plastic
Colour	Other
IP rating	IP65
Type of cover	Door
Transparent cover/door	Yes
With lock	No
Mounting method	Surface mounted (plaster)

MECHANICAL

Impact strength	IK10
-----------------	------

DIMENSIONS

Width in number of modular spacings	12
Height	250 mm
Width	320 mm
Depth	155 mm

NWP12

NHP Loadcentre Weatherproof 12 Way DIN-T Surface Mounted



ELECTRICAL ENGINEERING PRODUCTS

DIMENSIONAL DIAGRAM

