



# Essential SmartBright G2 LED Downlight DN029B

## DN029B G2 LED8/CCT PSR-E D90 CAU 10-PK

The Philips SmartBright G2 LED downlight provides a professional and flexible solution for a wide variety of applications. Offering three selectable colour temperatures plus integrated dimming capability, the G2 downlight makes it really easy to create the perfect ambience for your unique environment. This affordable and quick to install fitting delivers high energy savings without compromising on light quality.

### Product data

General Information		Controls and Dimming	
Lamp colour code	3000/4000/6500	Dimmable	Yes
Light source	No		
replaceable			
Luminaire light beam spread	100°		
Connection	Plug-in connector 2-pole		
Protection class IEC	Safety class II (II)		
Operating and Electrical		Mechanical and Housing	
Input Voltage	220 to 240 V V	Housing material	Metal-Plastic
Input frequency	50 or 60 Hz	Reflector material	Polycarbonate
Power factor (min.)	0.8	Optic material	Polycarbonate
		Fixation material	Stainless steel
		Optical cover/lens finish	Frosted
		Overall length	114 mm
		Overall width	114 mm
		Overall height	56 mm
		Overall diameter	114 mm
		Colour	White

# Essential SmartBright G2 LED Downlight DN029B

Dimensions (height x width x depth)	56 x 114 x 114 mm (2.2 x 4.5 x 4.5 in)
<b>Approval and Application</b>	
Ingress protection code	IP40/IP54 front
Mech. impact protection code	IK03 [ 0.3 J]
<b>Initial Performance (IEC Compliant)</b>	
Initial luminous flux (system flux)	800 lm
Initial LED luminaire efficacy	106.00 lm/W
Lamp colour temperature	3000 4000 6500 K
Colour Rendering Index	80
Initial chromaticity	(3000K@, 0.4400, 0.40304000K@0.37600.36566500K@0.31300.3370) 6
Initial input power	7.5 W
Power consumption tolerance	+/-10%
<b>Over Time Performance (IEC Compliant)</b>	
Median useful life	30000 h
L70B50	

## Application Conditions

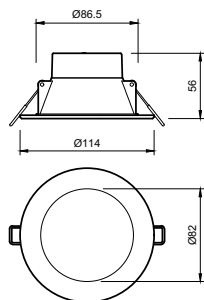
Ambient temperature range	-20 to +40 °C
---------------------------	---------------

## Product Data

Full product code	871951425179300
Order product name	DN029B G2 LED8/CCT PSR-E D90 CAU 10-PK
EAN/UPC – product	8719514251809
Order code	929002531249
Local order code	DN029BL8CCT90PK
SAP numerator – quantity per pack	1
Numerator – packs per outer box	40
SAP material	929002531249
SAP net weight (piece)	0.230 kg



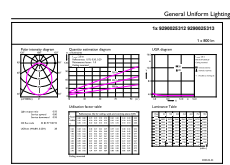
## Dimensional drawing



DN029B G2 LED8/CCT PSR-E D90 CAU 10-PK

# Essential SmartBright G2 LED Downlight DN029B

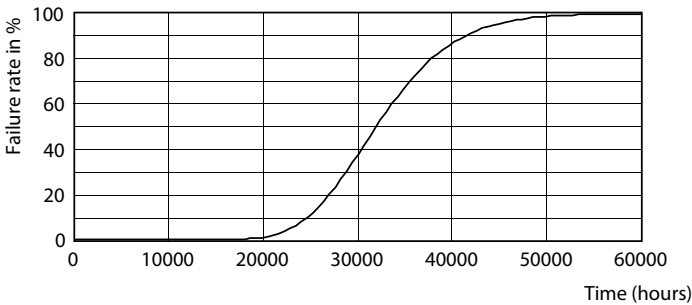
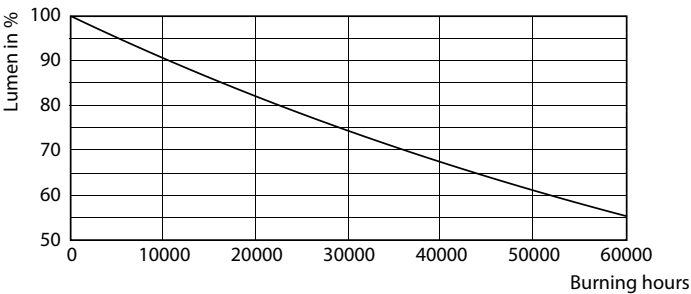
## Photometric data



© 2022 Philips Lighting B.V. All rights reserved. Philips Lighting B.V. is a registered trademark of Koninklijke Philips N.V.

## Downlight DN029B G2 LED8 CCT PSR D90

### Lifetime



## B50L70 30K LMP

## B50L70 30K LED

