

Rittal – The System.

Faster – better – everywhere.

TS punched section with mounting flange, 17 x 73 mm – TS 8612.080

Date : Aug 4, 2016

ENCLOSURES

POWER DISTRIBUTION

CLIMATE CONTROL

IT INFRASTRUCTURE

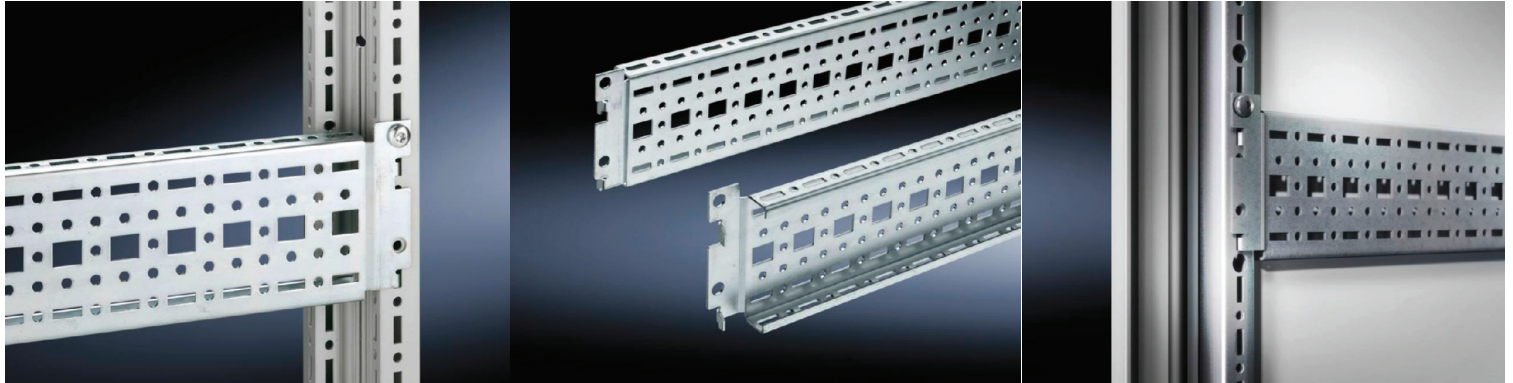
SOFTWARE & SERVICES

FRIEDHELM LOH GROUP



TS punched section with mounting flange, 17 x 73 mm – TS 8612.080

created: 04.08.2016 build on www.rittal.com/au-en



Product description

Description: Variable, with 5 rows of holes for universal skeleton structures or partial assembly. Simply locate onto the TS punchings and secure.

Material: Sheet steel

Surface finish: Zinc-plated

Assembly instruction: The rail for internal mounting is required when installing in CM, TP

Supply includes: Assembly screws

Packs of: 4 pc(s).

EAN: 4028177212107


Customs tariff number: 73269098

eCl@ss 5.1: 27189250

eCl@ss 7.0: 23159101

ETIM 6.0: EC002625

Product features

Design:	For the inner mounting level and for mounting on doors
To fit:	Width/depth: 800 mm
Dimensions:	Length: 790 mm
Installation options:	<p>On the vertical TS enclosure section: On the inner mounting level, height-offset all-round</p> <p>For SE, may additionally be mounted on the top horizontal section in the depth</p> <p>In the tubular door frame for TS, SE and PC</p> <p>In CM and TP via rail for interior installation: In the width, for inner mounting level</p> <p>As a mounting kit for component shelves, simply locate and secure. One pack is sufficient for 2 component shelves. 100 kg surface load, static</p>
To fit door width:	900 mm
Weight/pack:	3.58 kg
Downloads	
Data sheets:	 Technical details EN
CAD drawings:	Request