

# Motion Detector 180° PIR

# ROBUS®

QUALITY PRODUCTS BY LED GROUP

## L180B-01 & L180B-04

Please read instruction before commencing installation and retain for future reference.

### Specification:

Stand alone Passive infra-red sensor switch (PIR). Replacement for standard single gang wall switch. Energy saving lighting control, which is ideal for indoor, outdoor and wall.

Electrical Protection: Class II (no earth required)

Supply: 220V~240V 50/60Hz

Output Load: Max. 1,000W Incandescent lamp,  
300W Fluorescent, 150W LED

Operating Temp: 5°C < ta < 40°C

Dimension: Height: 75mm, Width: 85mm, Depth: 95mm

Weight: 0.26Kg

Detection range: 180° Detection Angle, 12m Range,  
2.5m Max Mounting Height

Delay time: Adjustable time delay 10 seconds ~ 4 minutes

Light Level Adjustment: Daylight to night adjustable

IP: IP44

Terminals suitable for cable sizes from 0.75mm<sup>2</sup> to 1.5mm<sup>2</sup>.

Suitable for mounting on normally flammable surface

Note:

Product technical information and specification may change over time without prior notification. For the latest technical information please visit our web site [www.ledgrouprobust.com](http://www.ledgrouprobust.com) or [www.robustdirect.com](http://www.robustdirect.com)

### Installation:

**! Electrical products can cause death or injury, or damage to property. If in any doubt about the installation or use of this product, consult a competent electrician.**

1. Ensure mains supply is switched off before commencing work.
2. Choose suitable location for mounting the sensor, optimum mounting height is approx 2.5m above ground level.
3. When cutting or drilling holes ensure not to impinge on buried cable or pipe work.  
**Avoid:** positions close to exhaust gas flues, heat extraction vents, shrubs and trees avoid false triggering. Also avoid pointing toward bright lights which may prevent operation (or cause hunting i.e. flashing lights on and off) when Lux level set for night operation.
4. Remove back plate by undoing the 2 screws visible from the front
5. Fix back plate to wall
6. Connect supply brown wire to L in, connect switch live to L out and connect blue wire neutral to N. An earth is not required to operate this sensor, however it is possible to use the earth terminal as a looping point
7. Set Lux control to day or sun position and Time to minimum (-).
8. Put switch in the on position and attach sensor to wall.
9. Switch on mains supply: The sensor will warm-up for approx 30~60 seconds and then switch to auto detection mode.

Walk testing can then be carried out to determine detection area with slow walking pace. When the sensor detects movement, the load will be switched on for the preset time. Tilting the head downward will reduce detection range. When detection field is satisfactory, set light level and delay time. Turning the Lux control toward the moon position will stop switching action during bright daylight (for energy saving). To increase on time turn time control towards +, max time delay 4 minutes. Note: once sensor has been triggered, subsequent detection restarts timing period from beginning, so light stays on until set time elapses after last triggering.

### Information for the Product user

1. Please note the requirement to dispose of Waste Electrical & Electronic Equipment separately from household waste (WEEE marked with crossed out wheelie bin symbol).
2. Please consider your role in contributing to re-use and recycling by returning this product at end of life to a collection centre for waste electrical equipment or a Civic Amenity site, or to a retail outlet from which you are purchasing a replacement.
3. This equipment may contain substances that are hazardous to health and the environment if disposed of carelessly. It is important that it is separated from normal household waste and recycled in the WEEE chain
4. The "crossed out wheelie bin symbol" on a product indicates this equipment must not be disposed of in normal household waste, but should be disposed of according to local WEEE regulations

**The Installation must be carried out by an electrician**

LED Group  
Western Retail Park  
Nangor Road  
Dublin 12  
Ireland  
Issue 2 150414

Tel: +353 1 7099000  
Fax: +353 1 7099060  
Email: [info@led.ie](mailto:info@led.ie)  
Website: [www.led.ie](http://www.led.ie)



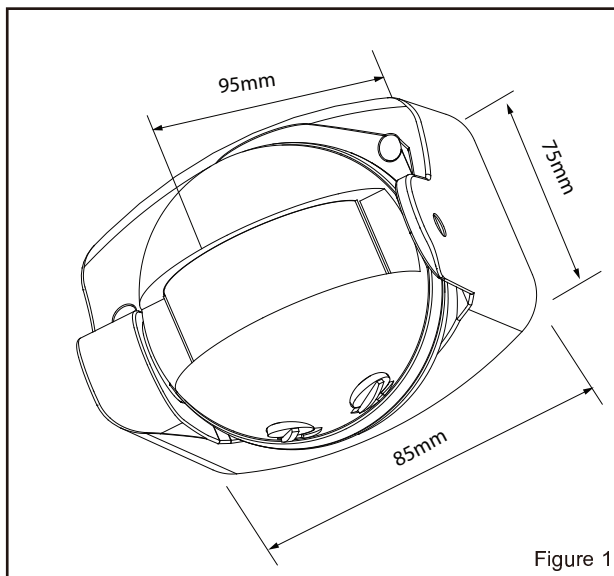


Figure 1

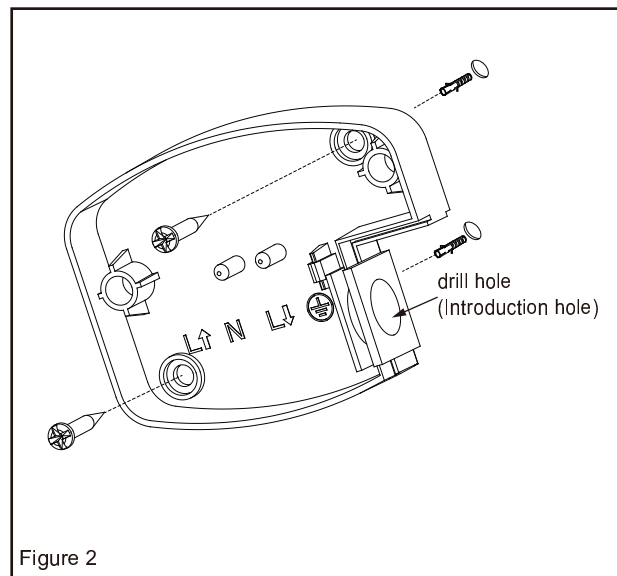


Figure 2

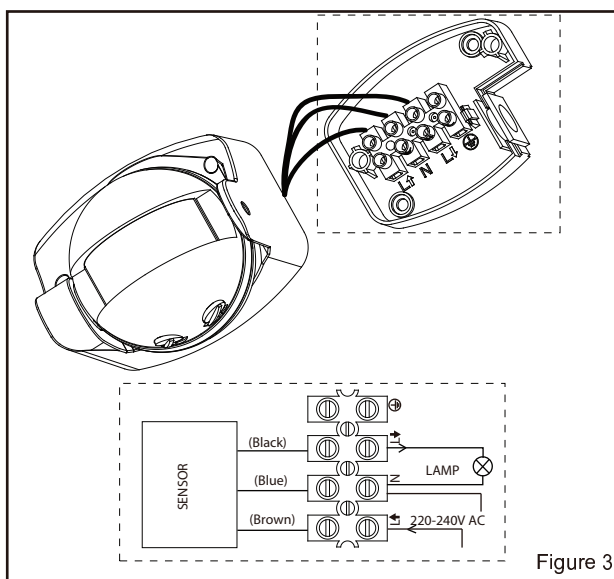


Figure 3

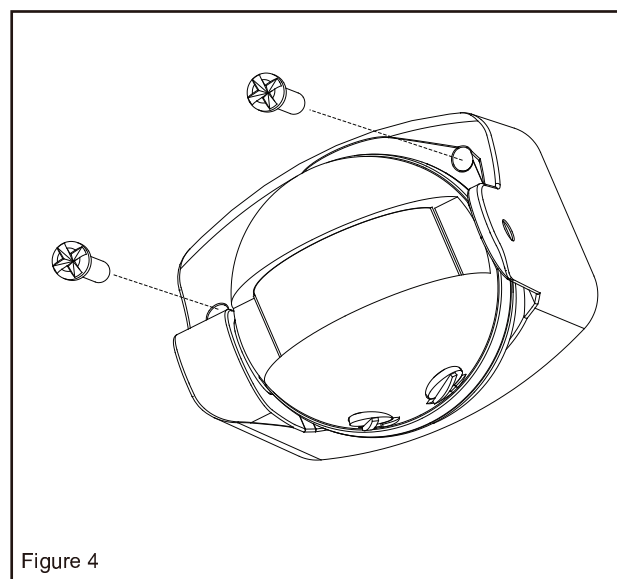


Figure 4

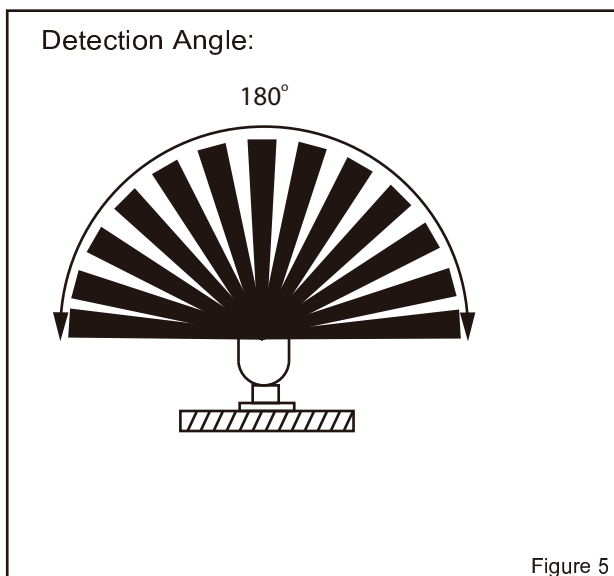


Figure 5

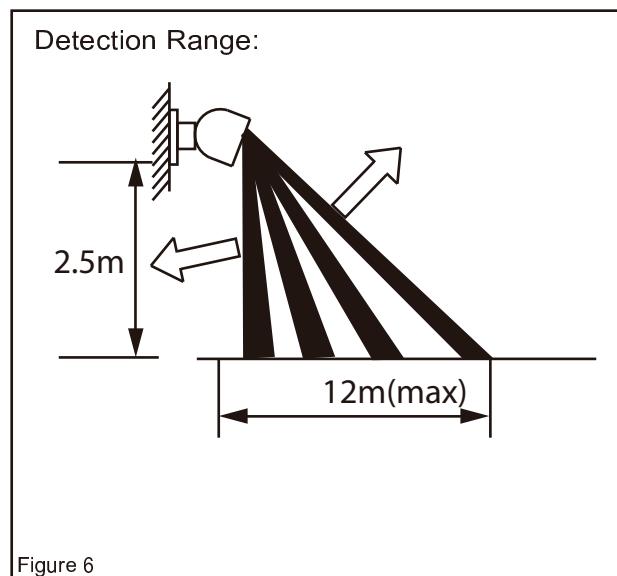


Figure 6

**The Installation must be carried out by an electrician**