



NDRR50RT

- Emergency stop latching pushbutton
- Emergency stop and Mushroom devices with latching
- hygienic design
- Protection class IP69K
- Mounting hole 22.3 mm

Data

Ordering data

Product type description	NDRR50RT
Article number (order number)	101163587
EAN (European Article Number)	4250116200146
eCl@ss number, version 12.0	27-37-12-12
eCl@ss number, version 11.0	27-37-12-12
eCl@ss number, version 9.0	27-37-12-12
ETIM number, version 7.0	EC001038
ETIM number, version 6.0	EC001038

Approvals - Standards

Certificates	cULus
--------------	-------

General data - Features

Emergency-Stop button	Yes
Mounting flange	Yes
Safety functions	Yes
External snap mechanism	Yes

Latching	Yes
Fully insulated	Yes
Number of contact elements, maximum	2

Mechanical data

Unlocking	Draw unlocking
Mechanical lifetime, minimum	100,000 Operations
Actuating force, approx.	2 N
Mounting	Mounting flange ELM
Tightening torque of the screw	0.6 Nm

Mechanical data - Dimensions

Height	45 mm
Note (Mounting depth)	Depth behind front panel including one contact element
diameters for the actuating heads	50 mm
Mounting diameter	22.3 mm
Thickness, of the front panel, minimum	1.5 mm
Thickness of the front panel, maximum	6 mm
Spacing	50 x 50 mm

Ambient conditions

Degree of protection	IP67 IP69K
Ambient temperature	-25 ... +80 °C
Resistance to shock	30 g / 18 ms
Resistant to vibration	20 g / 10 ... 150 Hz

Ordering code

Product type description:
NDR(1)50(2)(3)(4)(5)

(1)		
R		Latching (only in conjunction with EFR); unlocking by turning and pulling
Z		Latching mechanism (integrated in the device head); unlocking by pulling
(2)		
		white sealing ring
GR/		black sealing ring
BL/		blue sealing ring
(3)		
RT		red device head
(4)		
/xxx		digit for symbols
(5)		
		front ring silver (chrome-plated)
-2905-1		Front ring yellow (plastic)

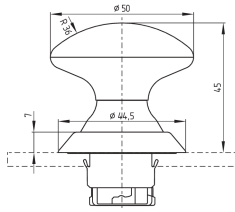
Pictures

Product picture (catalogue individual photo)



ID: kndrff03
 | 298.7 kB | .jpg | 352.778 x 425.45 mm - 1000 x 1206 px - 72 dpi
 | 50.8 kB | .png | 74.083 x 89.253 mm - 210 x 253 px - 72 dpi

Dimensional drawing basic component



ID: 1ndp-g01

| 35.4 kB | .cdr |

| 3.7 kB | .png | 74.083 x 51.153 mm - 210 x 145 px - 72 dpi

| 70.6 kB | .jpg | 352.778 x 243.769 mm - 1000 x 691 px - 72 dpi

K.A. Schmersal GmbH & Co. KG, Möddinghofe 30, 42279 Wuppertal

The details and data referred to have been carefully checked. Images may diverge from original. Further technical data can be found in the manual. Technical amendments and errors possible.

Generated on: 17/09/2025, 05:34