

**Product Line:** Stanilite®

**Product Group:** Batten LED Weatherproof

**Additional Description:** Batten LED Weatherproof AC and Standard Emergency with or without Motion Detect Sensor



Catalogue No.	Description
SBLWAC45L	Batten LED Weatherproof AC 4500 Lumens
SBLWAC45LMD	Batten LED Weatherproof AC 4500 Lumens with Motion Detect Sensor
SBLWEM45LM	Batten LED Weatherproof EM 4500 Lumens Maintained
SBLWEM45LMMD	Batten LED Weatherproof EM 4500 Lumens Maintained with Motion Detect Sensor

## Features:

### AC/EM Unit:

- 3 year warranty
- 4,500 Lumens on mains AC operation, 350 Lumens in emergency operation
- Weatherproof rating IP65
- IK08 impact rating
- Ceiling, wall mount or suspension mounting (wall mount requires 45 degree mounting brackets)
- High wall mount classification using wall mount brackets
- Long LED life 50,000 hours
- Colour temperature 4,000k
- High colour rendering index CRI >80
- Mains terminal block accepts up to 2.5mm<sup>2</sup> cable and has provision for looping
- High temperature NiCad battery for longer life
- Cable entry at either end of base
- External mounting clips for ease of installation
- Stainless steel diffuser clips
- High efficiency frosted polycarbonate diffuser

### Motion Detect Option:

- Microwave Motion Detect sensor with settings for delay time, detection range and light value function
- Luminaire is not switched on if there is adequate ambient illumination in the area sensed
- Maximum installation height 5m with variable range (0.5 - 5.0m)

## Dimensions:

Length	Width	Bare Height
1260mm	140mm	90mm

## Weight:

Model	Weight
AC	2.9kg
EM	3.2kg

## Construction:

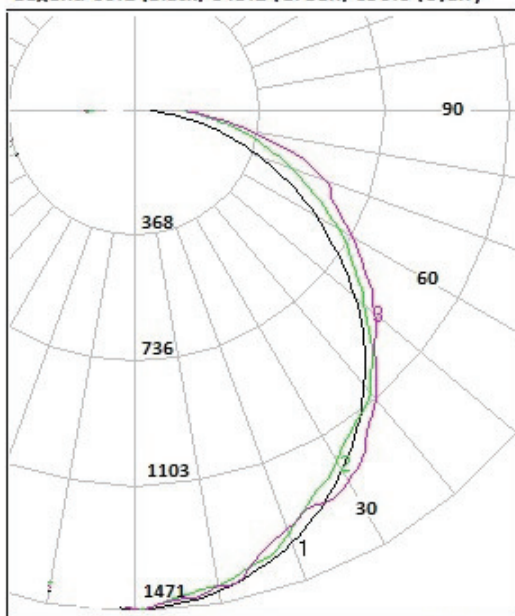
Part	Construction
Reflector	Powder Coated Steel
Body & Diffuser	Polycarbonate
Clips	Stainless Steel

## Light Source:

Model	Light Source
AC/EM	LED

## AC Polar Diagram:

Legend C0:1 (Black) C45:2 (Green) C90:3 (Cyan)



## Power Consumption:

Model	Normal	S/A Off	Standby
AC	48W	0	N/A
AC Motion Detect	48W	0	6W
EM	49W	1W	N/A
EM Motion Detect	49W	1W	7W

NB: Preliminary Results

## Photometrics:

Model	Class	Classification
EM: Ceiling Mount	C0 C90	D40 D50
EM: Wall Mount 45°	C0 C90	D80 D80

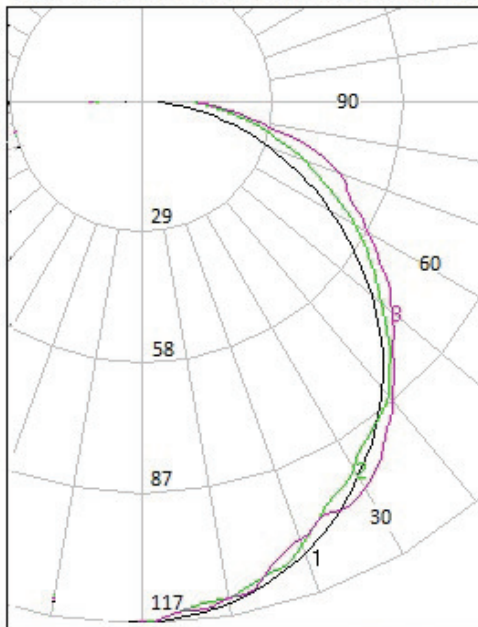
NB: Preliminary Results

## Spare Parts:

Catalogue No.	Description
03-01016P	Battery 3 Cell NiCad 3.6V 4.5Ah

## EM Polar Diagram:

Legend C0:1 (Black) C45:2 (Green) C90:3 (Cyan)



Thomas & Betts emergency lighting products are designed to comply with AS2293 and meet relevant Australian EMC Standards.  
Due to ongoing product development, specification changes may result.