



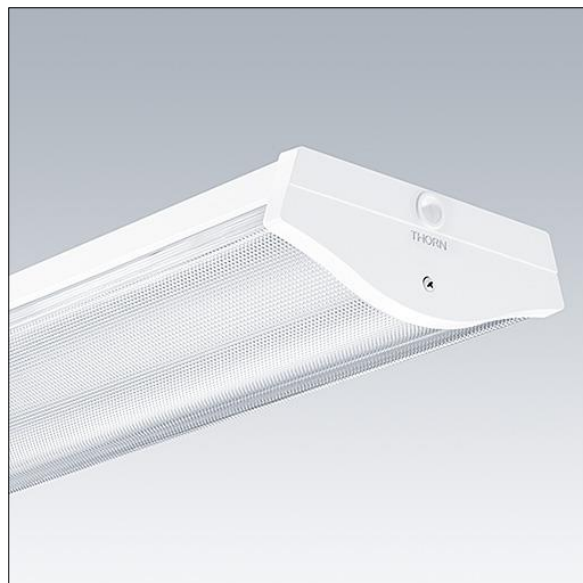
96628932 COLLEGE LED4200-840 HF L1200

LED 33W LED_CLLG_4200	IP44	IK05			850°C	T _a -10 +25
-----------------------	------	------	---	---	-------	---------------------------

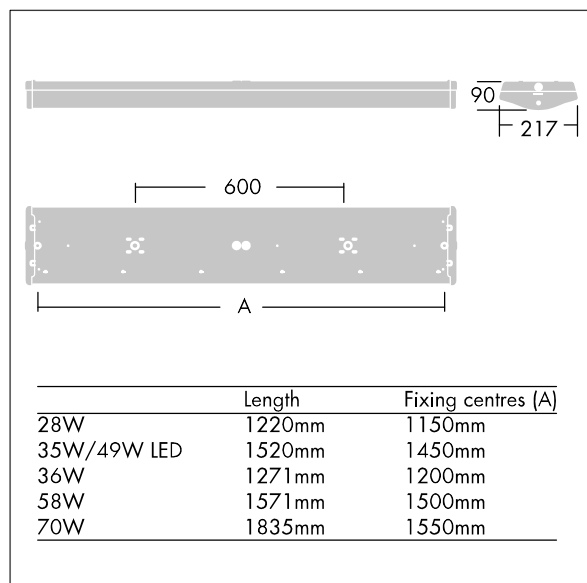
College

A high performance, surface mounted, LED luminaire. Electronic, fixed output control gear. Class I electrical, IP44. Body: white painted steel. End caps: white polycarbonate with a curved, precision extruded clear prismatic polycarbonate diffuser. Ø21.5mm cable entry hole in the centre of the back spine with optional cable entry through each end cap. Fitting supplied with sealing grommets and innovative "quick fix" horseshoe and sliding washers for direct screw fixing to surface, fixing centres 1150mm. Standard BESA fixings. Can be suspended using wire suspension accessory kit (to be ordered separately). 3 x 2 x 2.5mm² piano key terminal block. Complete with 4000K LED

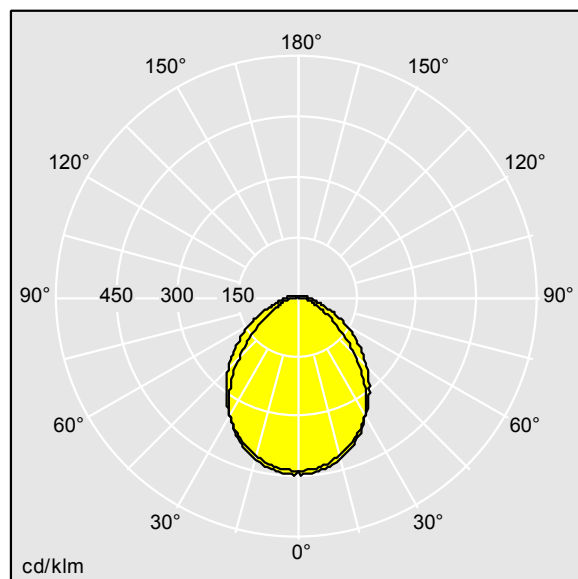
Dimensions: 1220 x 217 x 90 mm
Luminaire input power: 33 W
Weight: 3.63 kg



TLG_CLLG_F_P1.jpg



TLG_CLLG_M_LD1.wmf



TLG_SP_0043008.ltd

Lamp position: STD - standard
Light Source: LED
Luminaire luminous flux*: 4200 lm
Luminaire efficacy*: 127 lm/W
Lamp efficacy: 127 lm/W
Colour Rendering Index min.: 80
Correlated colour temperature*: 4000 Kelvin

Chromaticity tolerance (initial MacAdam)*: 3
Rated median useful life*:
50000h L80 at 25°C
Ballast: 1x HF_Xitanium
Luminaire input power*: 33 W
Dimming: FO
Maintenance category: D - Enclosed IP2X
LOR: 1,00 ULOR: 0,04 DLOR: 0,96

All values marked with an * are rated values. Thorn uses tried and tested components from leading suppliers, however there may be isolated instances of technology-related failures of individual LEDs during the rated product lifetime. International standards set the tolerance in initial flux and connected load at $\pm 10\%$. Colour temperature is subject to a tolerance of up to ± 150 Kelvin from the nominal value. Unless stated otherwise, the values apply to an ambient temperature of 25°C.

In most products the failure of one LED point causes no functional impairment to the lighting performance of the luminaire and is therefore no reason for complaint. Unless otherwise stated all Thorn LED products are suitable for unrestricted use (rated RG0 or RG1) with regard photobiological blue light safety (IEC/EN60598-1).

Thorn Lighting is constantly developing and improving its products. The right is reserved to change specifications without prior notification or public announcement.
© Thorn Lighting