

Surface mounted LED luminaire

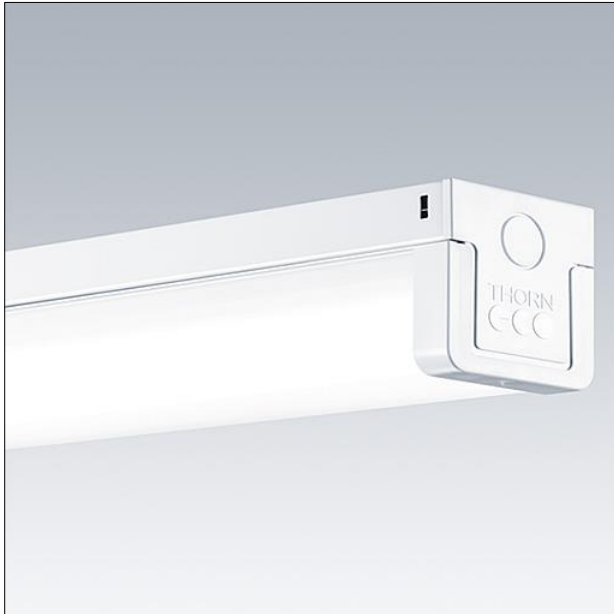
1200mm long LED batten with reliable integrated LED technology, ensuring maintenance-free installation and a long lifetime. Switchable light colour: choose between warm white (3000 K), cool white (4000 K) or daylight (5700 K) to suit the application. High quality opal diffuser ensures homogeneous illumination. High efficacy of 100 lm/W, save up to 50% energy compared with T5 fluorescent battens. Direct replacement for conventional battens in terms of light performance and length AS/NZS 2293 Emergency Classification, C0 = C63, C90 = C12.5 . Hour Maintained, LED Emergency Luminaire. Dimensions: 1200x66x69 mm.

Body: Stainless steel

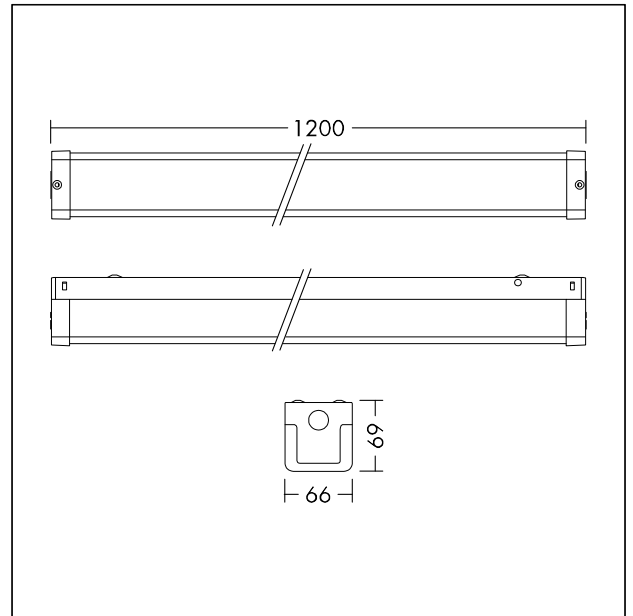
Diffuser: PC, opal white

End caps: PC, white

Weight: 2,0 kg



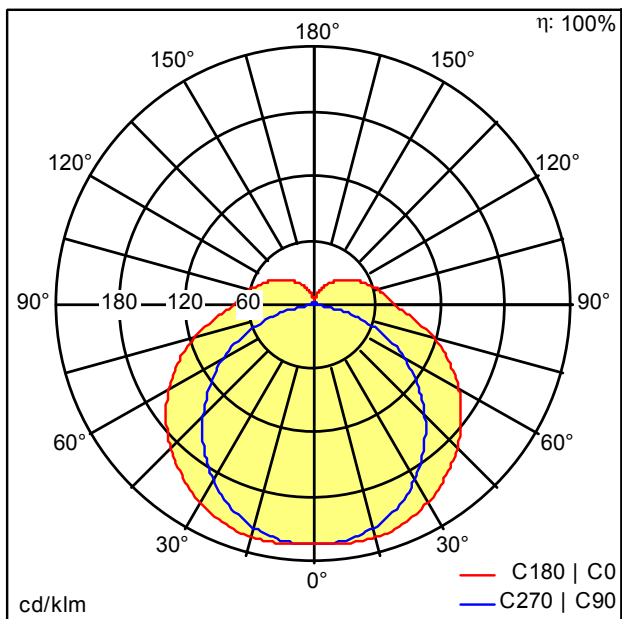
TE_BARRY_F_1200_PERSP.jpg



TE_BARRY_M_1200.wmf

Light Distribution

STD - standard



TE_BARRY_VAR_LED_1200_4000K_E2.Idt

- Light Source: LED
- Luminaire luminous flux*: 4814 lm
- Luminaire efficacy*: 120 lm/W
- Colour Rendering Index min.: 80
- Correlated colour temperature: 3000-5700 Kelvin
- Chromaticity tolerance (initial MacAdam): 5
- Rated median useful life*: L80 50000h at 25°C
- Ballast: 1x LED_Con
- Luminaire input power*: 40 W Power factor = 0.9
- Dimming: Fixed output

All values marked with an * are rated values. Luminous flux and connected electrical load are subject to an initial tolerance of +/- 10%. Unless stated otherwise, the values apply to an ambient temperature of 25°C.