

**TALEXdriver LCBU 10W 12V BASIC phase-cut SR**

BASIC series

The constant voltage LED Drivers of the BASIC series are ideal for operating retrofit LED lamps and are also the ideal energy-saving alternative to inefficient magnetic and electronic transformers. Many MR16 lamps available on the market can be operated with these devices. All LED Drivers comply with SELV specifications and generate 12 V DC output voltage.

**Product description**

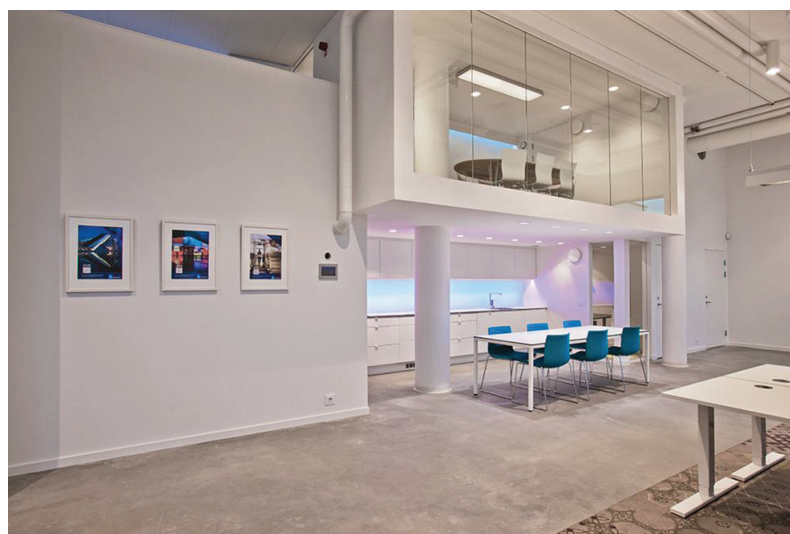
- \_ Dimmable via leading edge and trailing edge phase dimmers
- \_ Nominal life-time of 50,000 h (at max ta 50 °C with a failure rate ≤ 0.2 % per 1,000 h)
- \_ 12 V DC output voltage
- \_ Screw terminal
- \_ Connecting cable, wire cross-section 0.5 – 2.5 mm<sup>2</sup>
- \_ Output power 10 W
- \_ SELV
- \_ Type of protection IP20
- \_ Dimming range typ. 5 to 100 % (depending on dimmer)

**Properties**

- \_ Casing: polycarbonate, white
- \_ Compact dimensions
- \_ Overload protection
- \_ Short-circuit protection
- \_ No-load protection

**Website**

<http://www.tridonic.com/89800289>



Spotlights



Downlights



Linear



Area



Floor | Wall



Free-standing



Street



Decorative

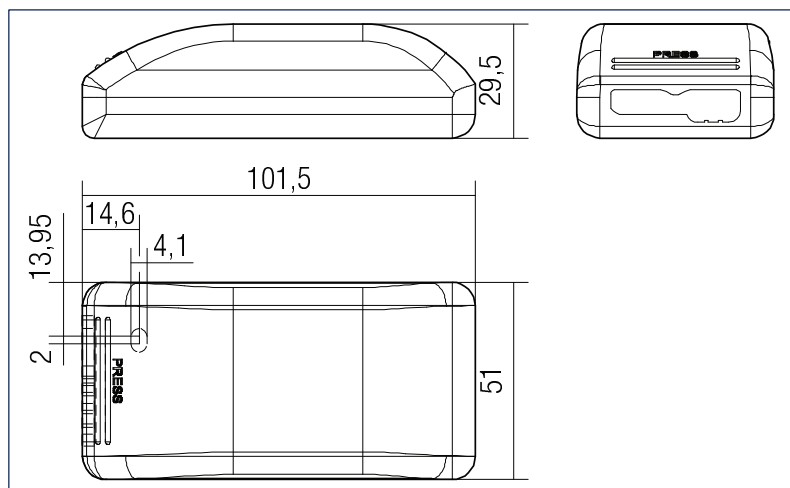


High bay

## TALEXdriver LCBU 10W 12V BASIC phase-cut SR

BASIC series

The complete data sheet for this product is available in the Downloads section.



### Ordering data

Type	Article number	Packaging, carton	Packaging, pallet	Weight per pc.
LCBU 10W 12V BASIC phase-cut SR	89800289	20 pc(s).	1,000 pc(s).	0.065 kg

### Technical data

Rated supply voltage	220 – 240 V
Input voltage AC	198 – 264 V
Mains frequency	50 / 60 Hz
Typ. rated current (at 230 V, 50 Hz, full load)	0.06 A
Power factor at full load <sup>①</sup>	0.9
Power factor at min. load <sup>①</sup>	0.7
Typ. current ripple (at 230 V, 50 Hz, full load)	± 30 %
Turn on time (at 230 V, 50 Hz, full load)	≤ 0.1 s
Turn off time (at 230 V, 50 Hz, full load)	≤ 0.1 s
Hold on time at power failure (output)	0 s
Ambient temperature ta	-25 ... +50 °C
Ambient temperature ta (at life-time 50,000 h)	50 °C
Max. casing temperature tc	75 °C
Storage temperature ts	-40 ... +85 °C
Dimensions L x W x H	102 x 51 x 30 mm

### Approval marks

IP20 SELV            

### Standards

EN 55015, EN 61000-3-2, EN 61000-3-3, EN 61347-1, EN 61347-2-13, EN 61547, EN 62384

### Specific technical data

Type	Efficiency at full load <sup>①</sup>	Efficiency at min. load <sup>①</sup>	Output current	Output voltage DC	Max. output voltage DC	Max. input power	Output power
LCBU 10W 12V BASIC phase-cut SR	77 %	65 %	0.83 A	11 – 15 V	15 V	13 W	3 – 10 W

<sup>①</sup> Test result at 230 V, 50 Hz.