

## PVC CORRUGATED CONDUIT HEAVY DUTY SOLAR BLACK

### Description:

Tripac Solar Heavy Duty Electrical Corrugated Conduit is a high-quality polyvinyl chloride (PVC) conduit designed to provide excellent flexibility, strength and protection for your wiring and cables. This conduit is excellent for safeguarding and concealing electrical cables in residential or commercial solar PV installations and offers resistance against impact, water, weather, chemicals, and corrosive environments.

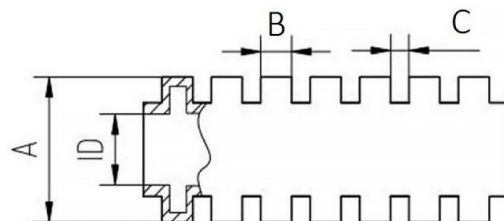
### Features & Benefits

- High-quality PVC construction ensures durability and longevity.
- Excellent flexibility allows for easy installation in complex setups.
- Provides protection for electrical cables and wiring.
- UV stabilised to withstand prolonged exposure to sunlight and outdoor conditions.
- Non-flame propagating for enhanced safety.
- Manufactured in accordance with AS/NZS 61386.1:2015 AMD 1:2019 (General Requirements) and AS/NZS 61386.23:2022 (Flexible Conduits)
- BEP certified for environmental compliance.
- Compression strength exceeding 1250N



### Product Specifications:

- Type: Heavy Duty (HD) Solar
- Colour: Black
- Material: Polyvinyl Chloride (PVC)
- Temperature Range: -5°C to 60°C
- UV Resistance: Yes (2% carbon black)
- Flame Retardant: Yes
- Compression Strength: >1250N
- Manufactured in accordance with AS/NZS 61386.1:2015 AMD 1:2019 (General Requirements) and AS/NZS 61386.23:2022 (Flexible Conduits)
- BEP certified



### TECHNICAL INFORMATION

Part No.	ID (mm)	A(mm)	B(mm)	C(mm)
CCS2550BK	18	24.8~25	2.5	1.5

### Applications:

Tripac Solar Heavy Duty Corrugated Conduit is suitable for safeguarding and concealing electrical cables in residential or commercial solar PV installations.

## PVC CORRUGATED CONDUIT HEAVY DUTY SOLAR GREY

### Ordering Information

PART No.	DESCRIPTION	SIZE (CM)	WEIGHT (KG)
CCS2550BK	CORRUGATED CONDUIT SOLAR BLACK 25MM X 50M	47 x 47 x 24	8.2



**Mercury & Lead Free**



**UV Stabilised**



**Non-Flame Propagating**



**Operating Temperature**  
-5°C to 60°C



**Conforms to AS/NZS 61386.23:2022**



**>1250N Compression Strength**



### Installation Guidelines:

- Ensure that the conduit is cut to the required length using appropriate tools.
- Clean the conduit ends and fittings before installation.
- Connect the conduit using compatible fittings and secure them tightly.
- Route the electrical wiring through the conduit, ensuring proper organisation and support.
- Fasten the conduit securely using suitable clamps, brackets, saddles etc.