

NHP ELECTRICAL ENGINEERING PRODUCTS

NHP

Instruction manual

NHP NWP loadcentres

IP65



nhp.com.au | nhpnz.co.nz



1300 647 647 | 0800 647 647

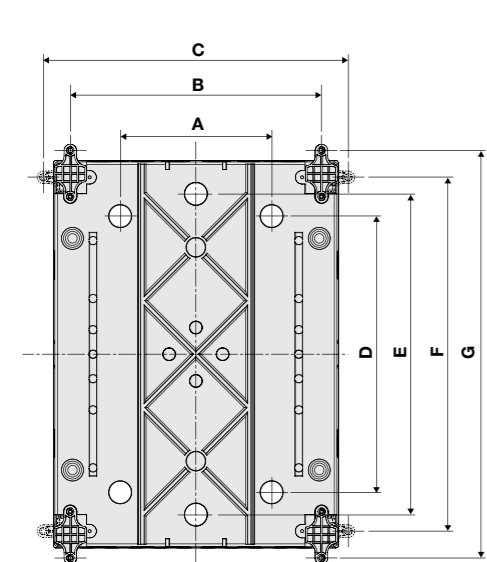
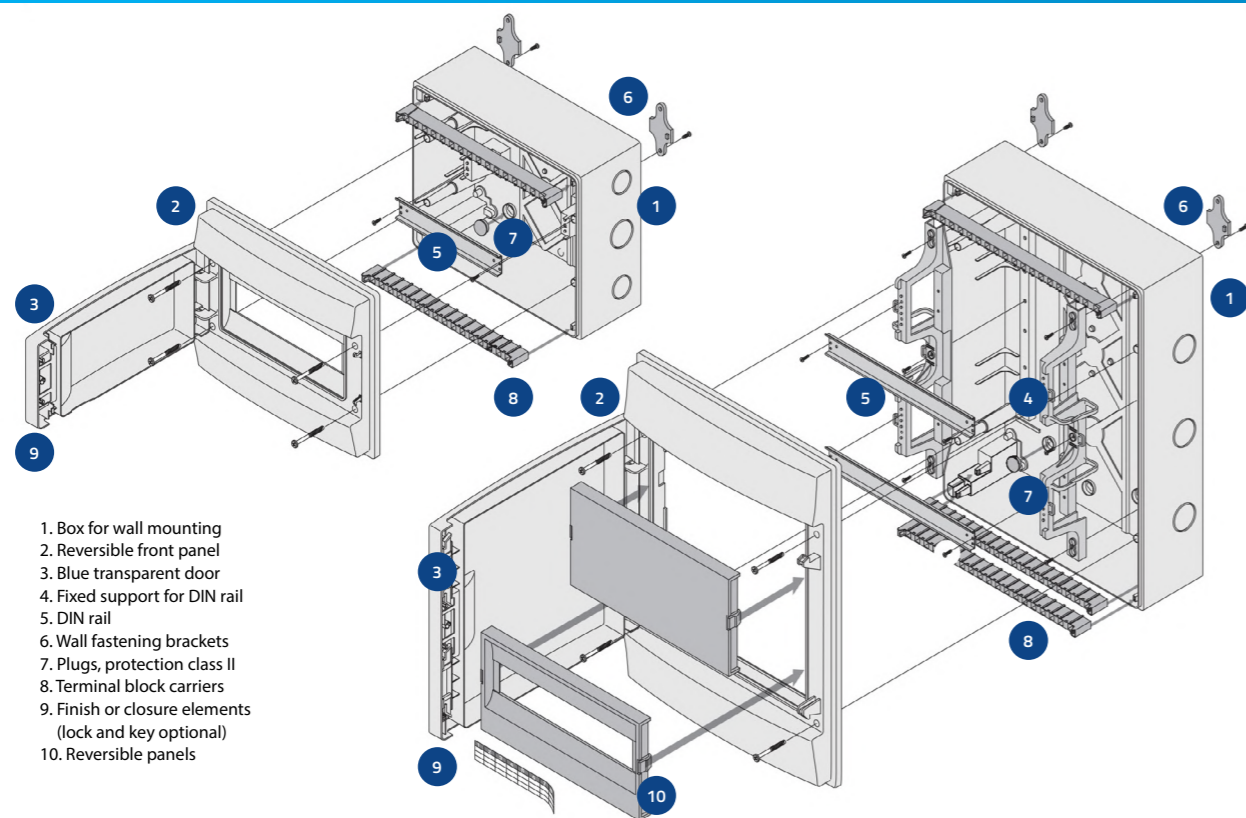


nhpsales@nhp.com.au | sales@nhp-nz.com

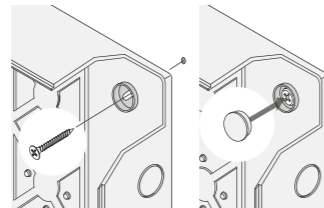
NHP NWP loadcentres

Robust design

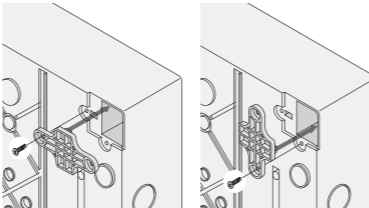
The weatherproof loadcentre with a robust design suited for various electrical installations, offering maximum space and transparency.



Plugs, protection class II



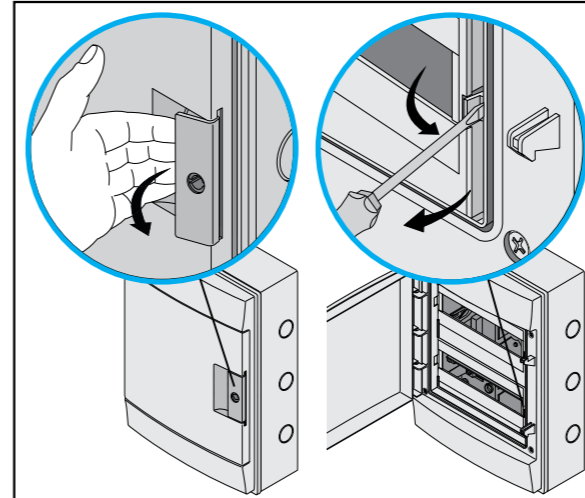
Exterior brackets for wall fastening



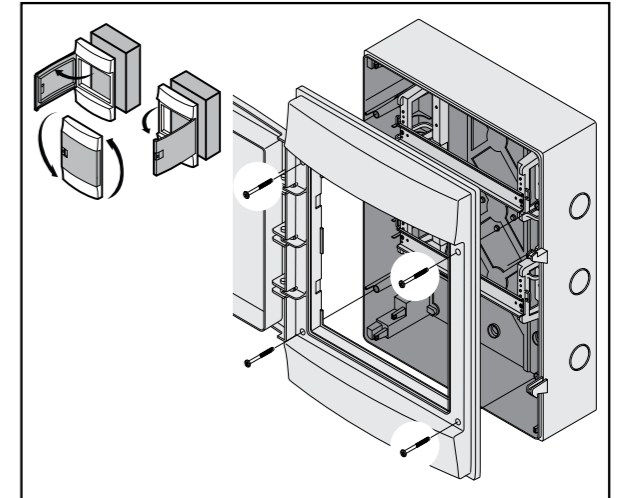
| | A | B | C' | D | E | F | G' |
|----------|-----|-------|-------|-----|-----|-----|-------|
| 4M | | 113 | 173 | | 140 | 163 | 223.5 |
| 8M | 90 | 194 | 254.5 | 180 | | 212 | 272.5 |
| 12M | 170 | 282.5 | 343 | 180 | | 212 | 272.5 |
| 24M | 170 | 282.5 | 343 | 310 | 360 | 397 | 457.5 |
| 36M 12x3 | 170 | 282.5 | 343 | 475 | 525 | 562 | 622.5 |

*When used with wall fixing brackets

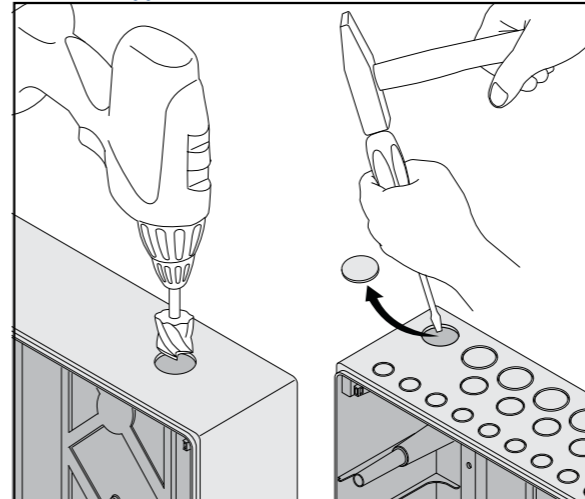
Easily accessible



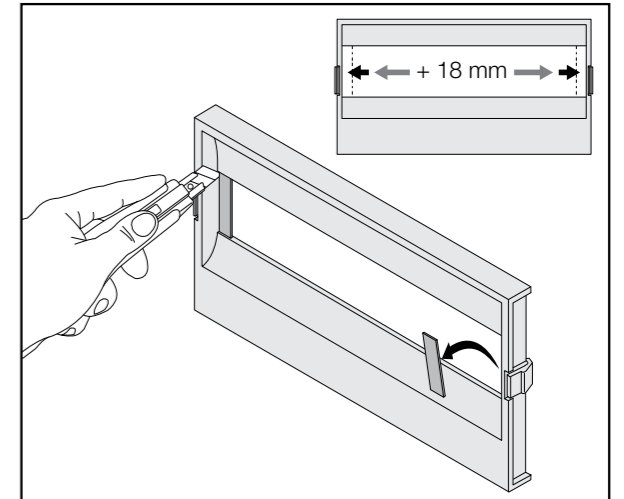
Adjustable left to right door hinging



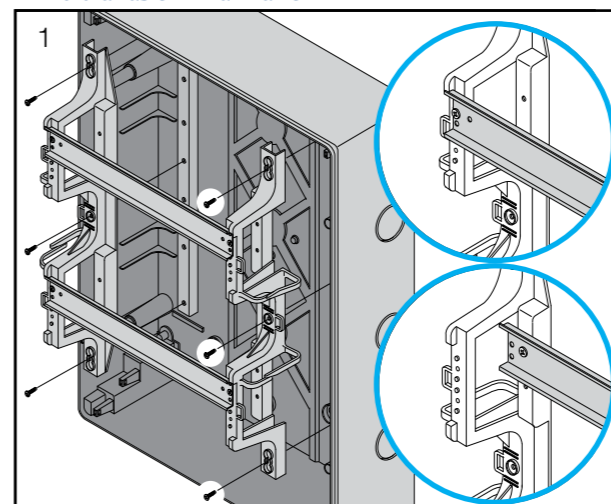
Cable entry points



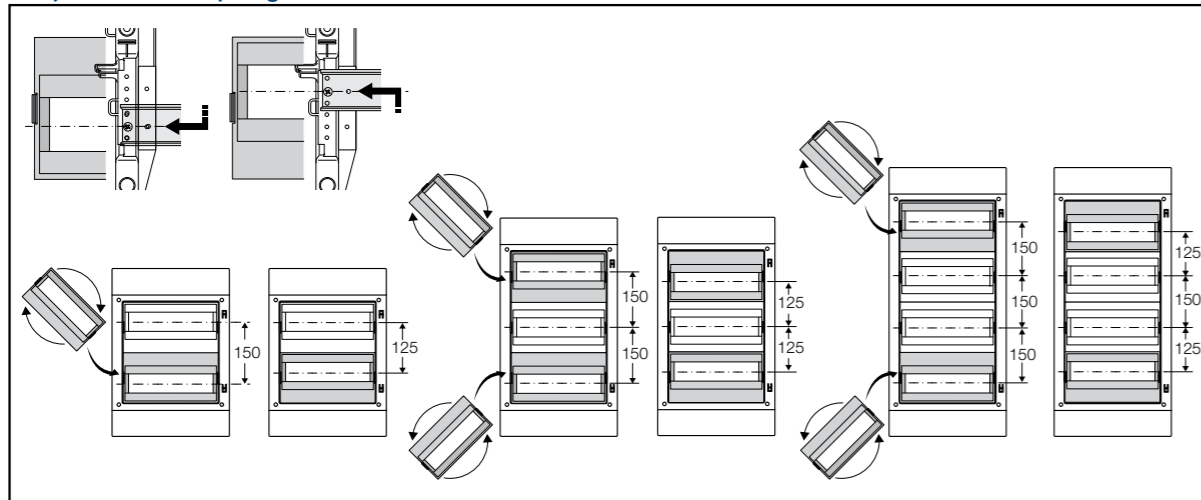
Escutcheon cut-out



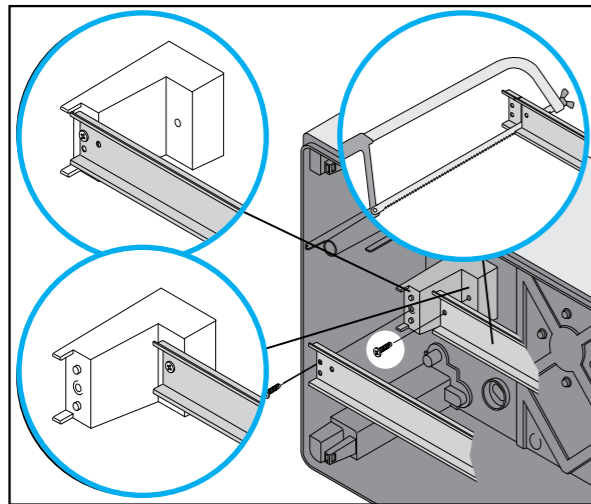
Withdrawable DIN rail frame



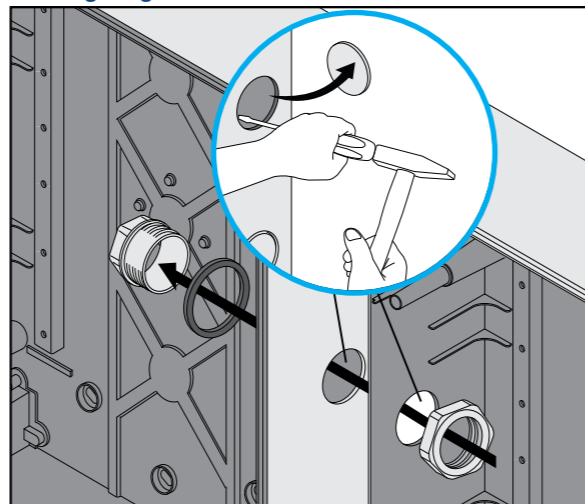
Adjustable DIN rail spacing



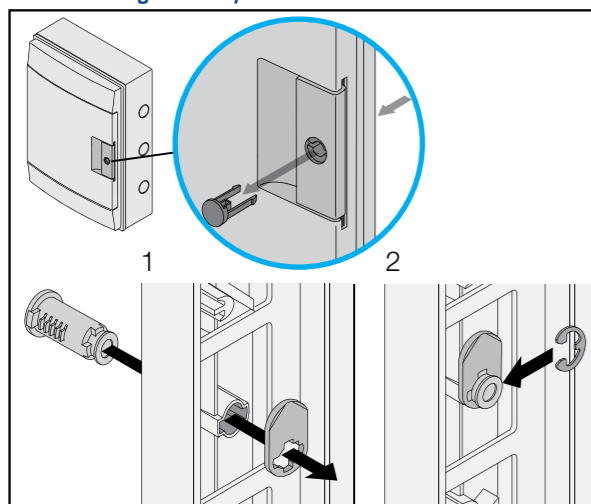
Customizable DIN rail



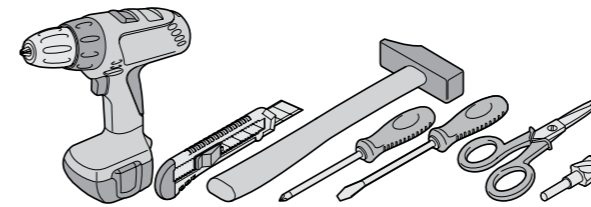
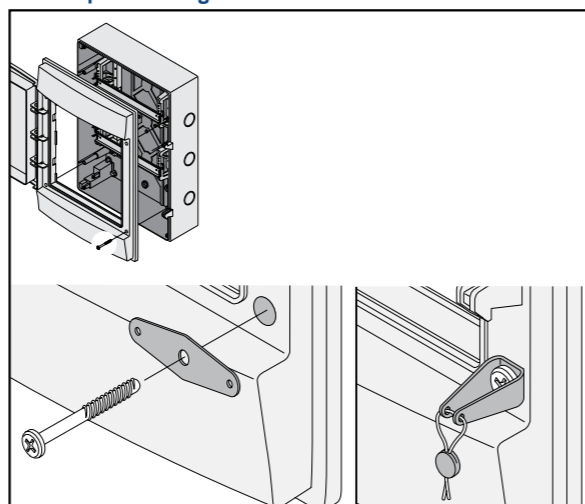
Joining using Junction unit



Door-locking assembly

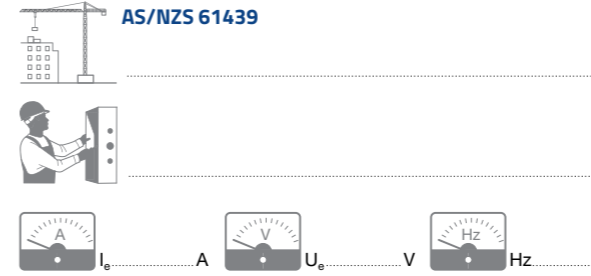



Front panel sealing bracket



| A (mm) | B (mm) | 6.5x1 | PH1 | max (N/m) |
|--------|--------|-------|-----|-----------|
| 3.5 | 12 | 6.5x1 | PH1 | 0.8 |
| 5 | 42 | 8x1.2 | PH2 | 1.3 |

AS/NZS 61439



Double insulation 
 The symbol given on the electrical boxes, panels and soaled boxes, indicates that they are made in such a way as to realize protection against indirect contacts, by means of complete insulation. For this purpose, they must be correctly installed according to the instructions supplied with the product and by using the accessories supplied (screw caps).

| A (mm) | B (mm) | 6.5x1 | PH1 | max (N/m) |
|--------|--------|-------|-----|-----------|
| 3.5 | 12 | 6.5x1 | PH1 | 0.8 |
| 5 | 42 | 8x1.2 | PH2 | 1.3 |

Screw terminal

Technical data:
 U_N : AC 400V / 50/60 Hz
 I_N : AC 63A
 T: +40 / -5° C
 IP2X

1,6 Nm
 Max 30N

12 mm

- H07V-U (CU)
- H07V-R (CU)
- H07V-K (CU)



nhp.com.au
1300 647 647
nhpsales@nhp.com.au

nhpnz.co.nz
0800 647 647
nhpsales@nhp-nz.com

NHP Electrical Engineering Products

A.B.N. 84 004 304 812
© COPYRIGHT NHP 2023
NHP13BCH 11/23