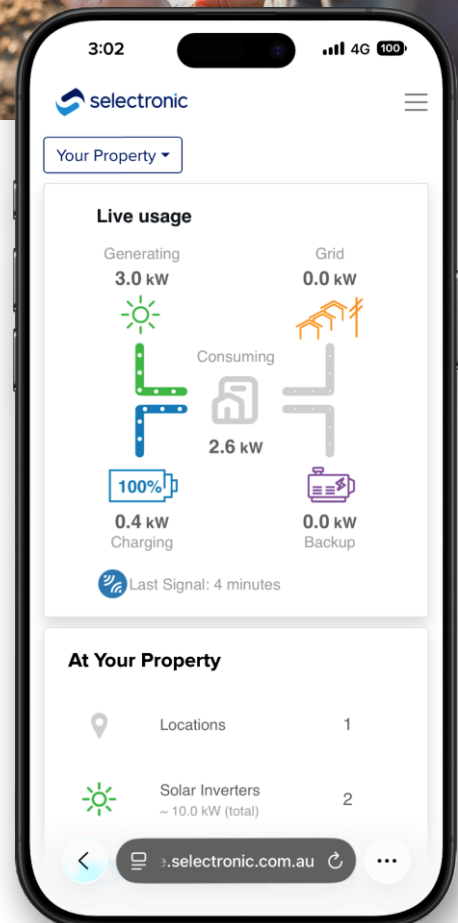




In today's digital age, immediate access to real-time information is no longer a luxury, it's a necessity. Presenting Select.live 2, a cutting-edge remote monitoring portal designed exclusively for Selectronic SP PRO energy storage systems.



Equip yourself with Select.live 2 and experience energy storage management like never before.



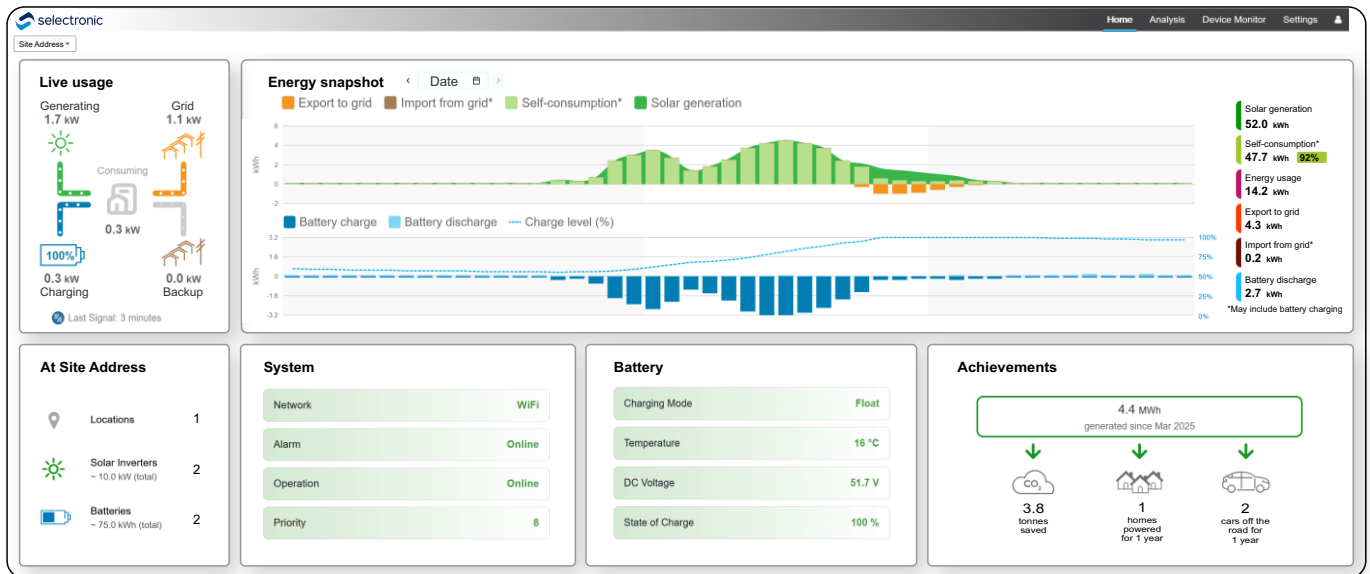
### Key Features:

- **Advanced Visual Dashboard:** Intuitive, modern interface with filters for real-time monitoring and performance insights.
- **Expanded Analytics Tools:** Energy generation, PV usage, Generator runtime tracking, PV generation trends, and Battery performance.
- **Flexible Alerts System:** SMS & Email Alerts.

### Product Highlights:

- **Multi-Site Monitoring:** Manage multiple sites from a single login for installers, retailers, or the utility.
- **Increased System Visibility:** Detailed individual device monitoring with a site details profile.
- **Carbon Meter:** Visually track your carbon reduction achievements.
- **More Value:** Overall improved analytics tools help installers provide ongoing value to clients.

## Select.live 2 Dashboard



## Select.live 2 Specifications

General	
Dimensions	W237mm x H241mm x D63mm (inclusive of antenna)
Weight	650g
Housing Material	UV-resistant ASA UL94HB
Bracket Material	Powder Coated Aluminium
IP Rating	IP43
Operating Temperature	0°C to 60°C
Operating Humidity	5% to 95% (non-condensing)
Power Method	DC Plug Pack
Rating	12V input, 1.5A max
Standards Compliance	AS/NZS 62368.1:2022, AS/NZS CISPR 32:2020
Regulatory Compliance	CSIP-Aus / Emergency Backstop
Demand Response Enabled Device (DRED)	1 x AS/NZS 4755 compatible DRED Interface
Communications	
Wireless	2.4GHz, 5.0GHz IEEE 802.11 b/g/n/ac wireless
Ethernet	10/100Mbps IEEE802.3
Serial	1 x RS232 max 115200bps - 1 x RS485 max 9600bps
Universal Serial Bus	Service use only
Security	Role based user access - Data encrypted at rest and in transit - Periodic Penetration Testing Secured password vault for storing access credentials